

Fiberglass Crossarms

“an alternative to wood”



MacLean Power Systems Copyright © 2008

Fiberglass vs. Wood

- **Fiberglass crossarms are Aesthetically pleasing**
- **Lighter than wood (1/2 to 1/3 the weight of comparable assemblies)**
- **Quicker Installation**
- **No Preservatives**
 - No concerns over potentially expensive disposal costs
 - No health concerns
- **Reduced maintenance**
 - No need to retighten hardware
 - “Woodpecker proof”
- **Comparable Total Installation Costs**
 - Fiberglass deadends are generally less expensive than unitized wood assemblies
 - Fiberglass deadends are generally less expensive than conventional double wood assemblies



MPS Philosophy

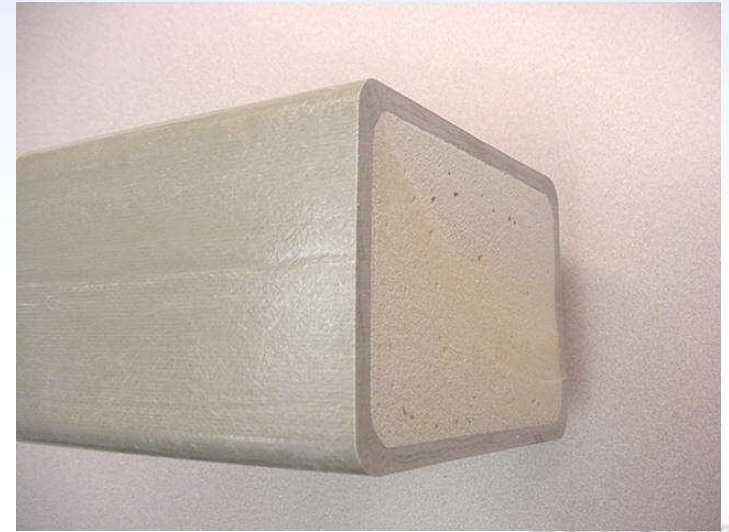
- **MPS is vertically integrated operation and produces all aspects of the fiberglass crossarm:**
 - Pultrusion – MacLean Fiberglass, Newberry SC
 - Centermounts – MacLean Power Bethea, Pelham AL
 - Hardware – MacLean Power Joslyn – Franklin Park IL
 - Assembly – MacLean Fiberglass, Newberry SC
- **Philosophy:**
 - Balance of High Strength and Low Deflection
 - Cross Sectional Size compatible with available hardware
 - Field Drillable design
 - Use of Castings versus Fabrications on Center mounts
 - No welds
 - Corrosion Resistant Aluminum
 - Use of Veil Technology versus Paint on Tubes
 - UV stable
 - Durability during handling



MPS Design

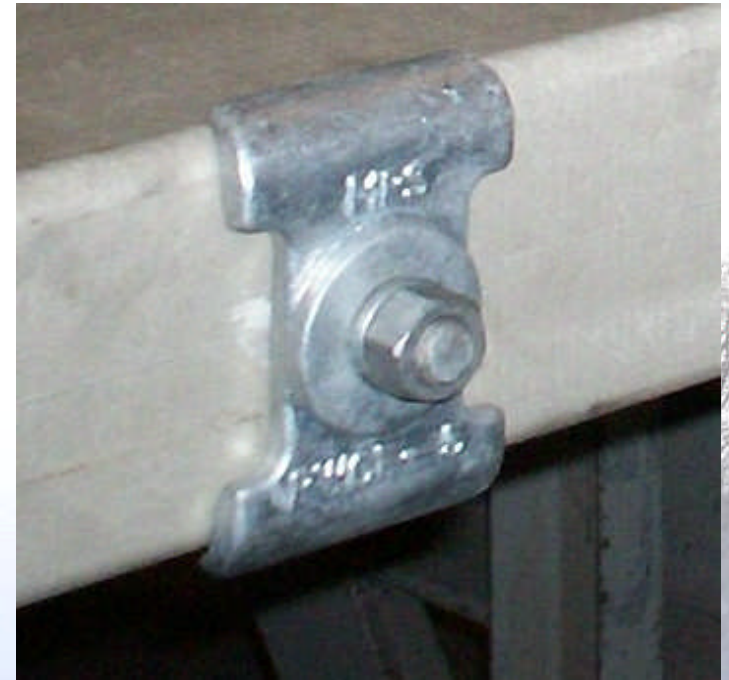
- **Fiberglass Tube:**
 - Polyester resin extrusion
 - Extensive use of fiberglass fibers and woven mat
 - High concentrations of UV inhibitors and pigments
 - External and Internal Veil
 - High density, closed cell, expandable foam

- **Deadend Centermount:**
 - 12" pole mounting spacing
 - 3/4" pole mounting hardware
 - Exclusive "Double nutting" feature
 - Cast Iron - 36k guy attachment rated



MPS Design

- **Tangent Centermount:**
 - 8, 10-12” pole mounting spacing
 - 5/8” pole mounting hardware – standard tangent
 - 3/4” pole mounting hardware – heavy tangent
- **Hardware:**
 - Galvanized per ASTM A-153
 - “Pentech” style washer – innovative patented product that provides superior load distribution performance across fiberglass deadend crossarms



Summary

- **Fiberglass crossarms**
 - an overall better performing alternative to wood
- **MPS Products**
 - deadend and tangent crossarms that meet the needs of the market
- **Design**
 - well balanced between strength and deflection
 - UV technology

