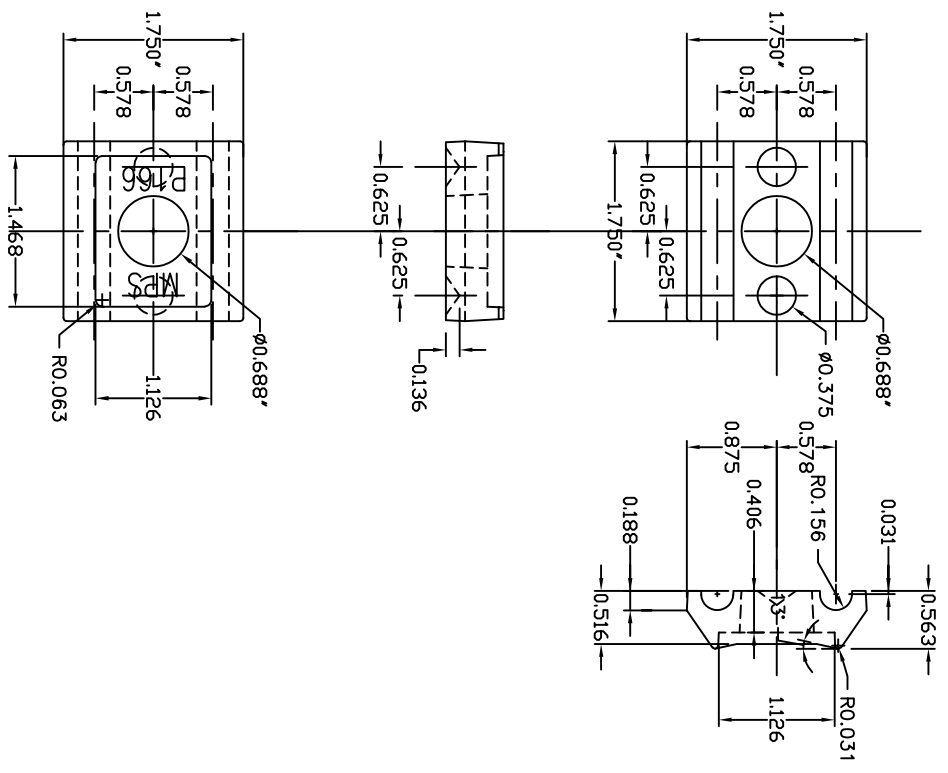
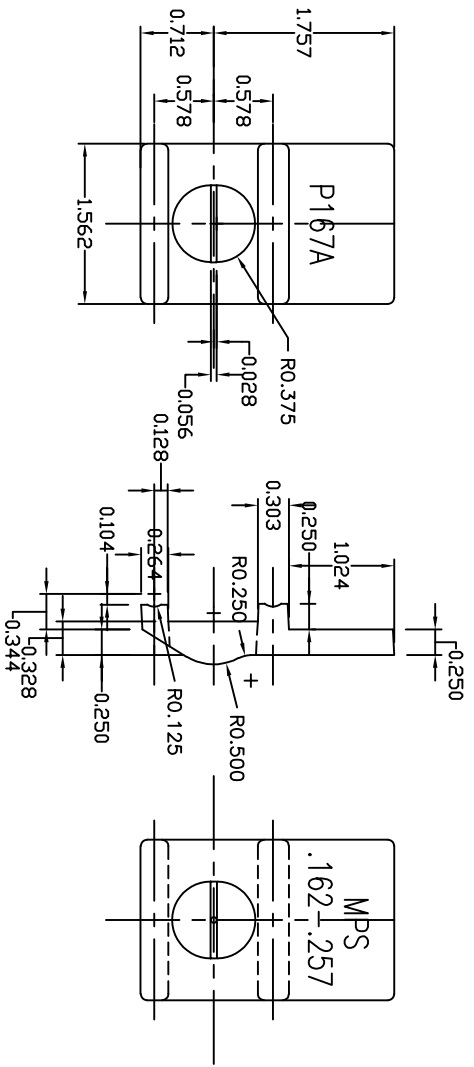


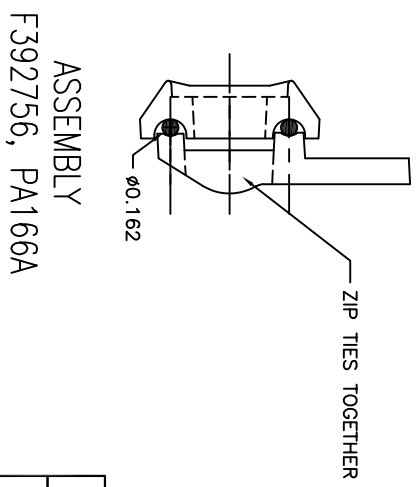
REVISIONS			
NO.	DATE	DESCRIPTION	BY
1	10-13-23	REDRAWN IN CAD	WCL



BODY DETAIL  
P63809, P-166



KEEPER DETAIL  
P63810, P-167A  
.162" - .257"



ASSEMBLY  
F392756, PA166A

- NOTES:**
- 1.0 MATERIAL-DUCTILE IRON PER ASTM A-536, GRADE 654S12, BHN 156-217.
  - 2.0 COATING-HOT DIP GALVANIZE PER ASTM A-153.
  - 3.0 BODY - P-166, 0.24 LBS.
  - 4.0 KEEPER - P-167A, .26 LBS.
  - 5.0 CLAMPING RANGE - .162" - .257"

**MPS**  
**MACLEAN POWER SYSTEMS**  
A Maclean-fogg Company

**GROUND WIRE OR SUSPENSION CLAMP & ASS'Y, PA166A**

DATE: 01/15/99	SCALE: NONE	NO.
DRN: JH	APP: JH	2-6245
REV:	REV:	1/1

ENG. REF.

This information is confidential and is the property of Maclean Power Systems. It may not be made public or reproduced except that the Customer may make copies for use solely in installation, maintenance and operation of products supplied by Maclean Power Systems.