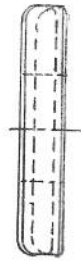
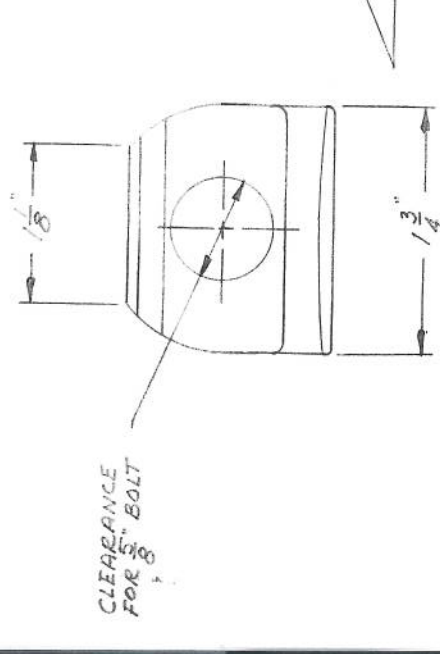
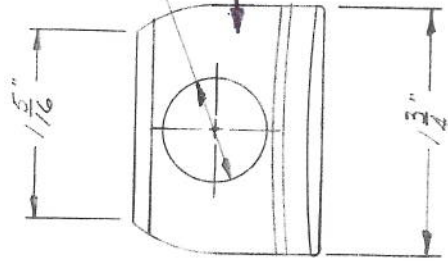
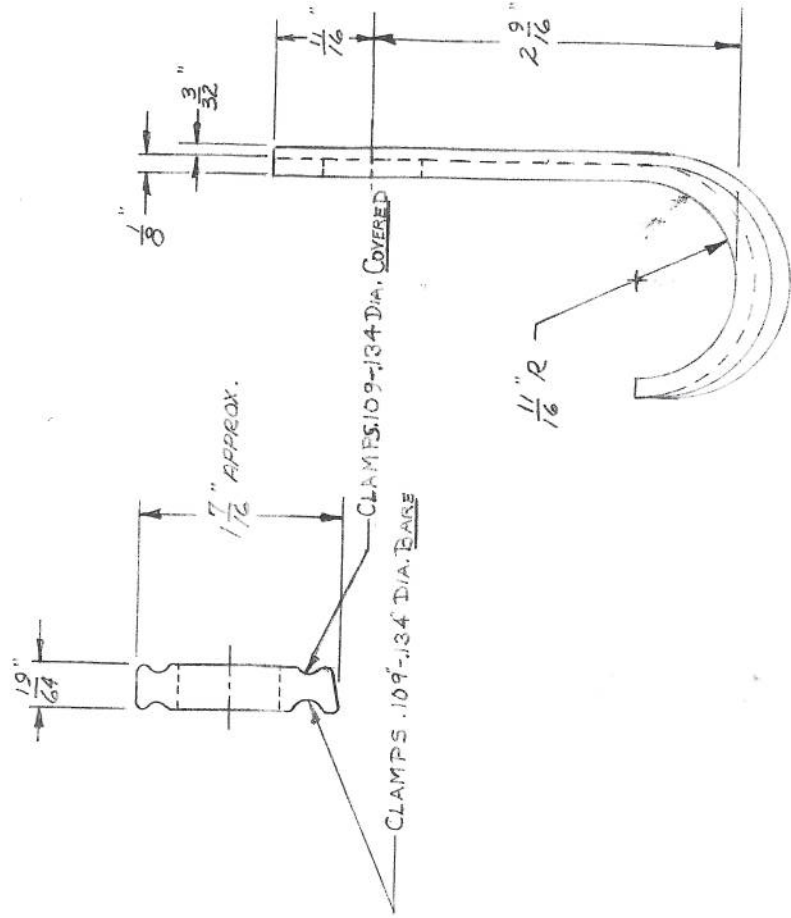


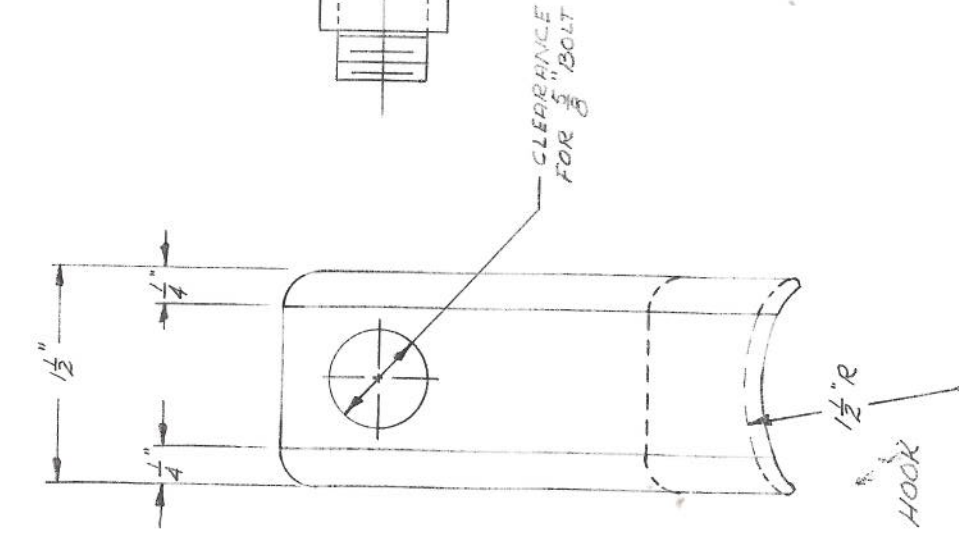
REVISIONS		
NO.	DATE	DESCRIPTION
1	7/12/16	REF - PENCIL DWG 3-7698 REV. 0.



P 292 X BODY



P 293 X CLAMPING PLATE



P 292X ASSEMBLY

NOTES:

PA292X ASSEMBLY CONSISTS OF:

- 1 - P 292X BODY
 - 1 - P 293X CLAMPING PLATE
 - 1 - PB357 "J" HOOK
- 2.0 BODY & CLAMP - DUCTILE IRON 654512
 3.0 HOOK - STEEL
 4.0 FINISH - HOT DIP GALVANIZE PER A-153.

This information is confidential and is the property of Maclean Power Systems. It may not be made public or reproduced except that the Customer may make copies for use solely in installation, maintenance, and operation of products supplied by Maclean Power Systems.

MACLEAN POWER SYSTEMS
 A Maclean-fogg Company

P292X, P293X & PB357

FIGURE 8 WIRE CLAMP

DATE: 10/8/62	SCALE: NA	NO. 3-7698	SH. 1
DWG. BY: JFK	CHK. BY:	APR. BY:	OF 1

ENG. REF.