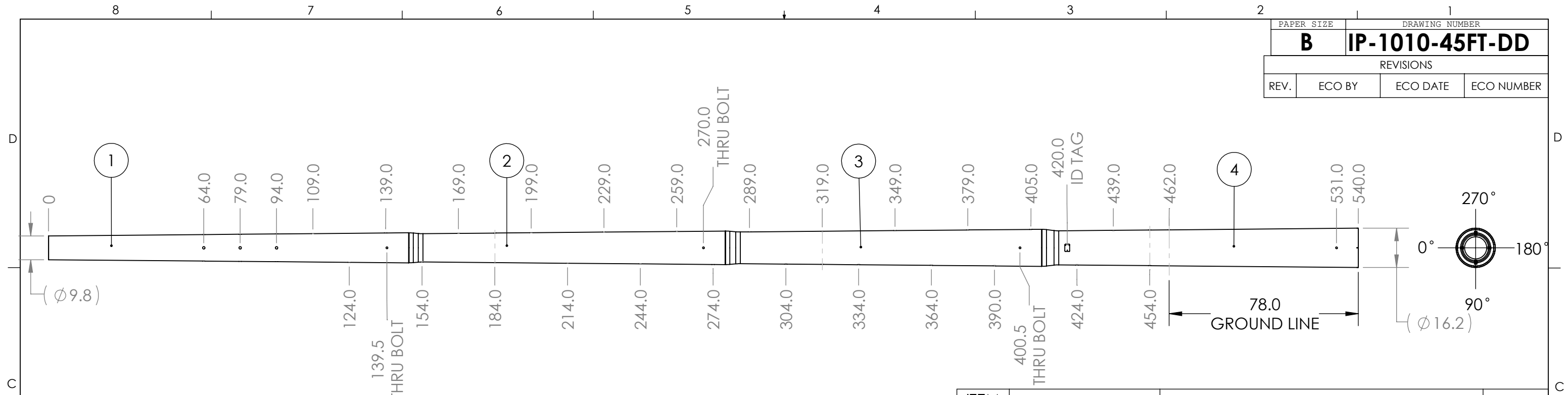


PAPER SIZE		DRAWING NUMBER	
<b>B</b>		<b>IP-1010-45FT-DD</b>	
REVISIONS			
REV.	ECO BY	ECO DATE	ECO NUMBER



HOLE PATTERN					
LOC.	0°	90°	180°	270°	USE
64	1"	1"	1"	1"	STEP
79	1"	1"	1"	1"	STEP
94	1"	1"	1"	1"	STEP
109				1"	STEP
124		1"			STEP
139				1"	STEP
139.5	3/4"		3/4"		DA BOLT
154		1"			STEP
169				1"	STEP
184		1"		1"	STEP
199				1"	STEP
214		1"			STEP
229				1"	STEP
244		1"			STEP
259				1"	STEP
270	3/4"		3/4"		DA BOLT

HOLE PATTERN					
LOC.	0°	90°	180°	270°	USE
274		1"			STEP
289				1"	STEP
304		1"			STEP
319		1"		1"	STEP
334		1"			STEP
349				1"	STEP
364		1"			STEP
379				1"	STEP
390		1"			STEP
400.5	3/4"		3/4"		DA BOLT
405				1"	STEP
424		1"			STEP
439				1"	STEP
454		1"		1"	STEP
462				1"	GRND LN
531	3/4"		3/4"		DA BOLT

ITEM NO.	PART NUMBER	DESCRIPTION	QTY.
1	IP-200-0001	INTELLI-POLE SECTION No.1	1
2	IP-200-0002	INTELLI-POLE SECTION No.2	1
3	IP-200-0003	INTELLI-POLE SECTION No.3	1
4	IP-200-0004	INTELLI-POLE SECTION No. 4	1
5	IP-300-0002	BASEPLATE SECTION 4 (NOT SHOWN)	1
6	IP-300-0003	TOP CAP, SMALL	1
7	IP-300-0005	ID TAG	1
8	IP-INV-RIVET-125	RIVET 1/8" X 1/4"	3
9	J8866	DOUBLE ARMING BOLT 5/8"X16"	1
10	J8868	DOUBLE ARMING BOLT 5/8"X18"	2
11	J113	WASHER, SQUARE CURVED	6
12	IP-INV-SQCAP	CAP, SQUARE SHIPPING	6
13	IP-INV-PLUG-1INCH	1 INCH HOLE PLUG	39
14	IP-500-0006	SCREW, BASEPLATE	8

NOTES:  
1. BOM ITEMS 5, 6, 9-14 ARE INCLUDED IN SHIPMENT BUT NOT DISPLAYED HERE  
2. DOUBLE ARMING BOLTS TO BE ASSEMBLED AT JOINTS DURING INSTALLATION  
3. COLOR: DARK BROWN  
4. POLE STEPS SOLD SEPARATELY

This drawing contains confidential information that is the property of MacLean Power, L.L.C. ("MPS"). Use of MacLean's confidential information without MPS's express written consent is strictly prohibited and may expose you to legal liability. If you believe that you received this material in error, please destroy it or return it to "MPS, 481 Munn Rd East, Fort Mill, SC 29715, USA."

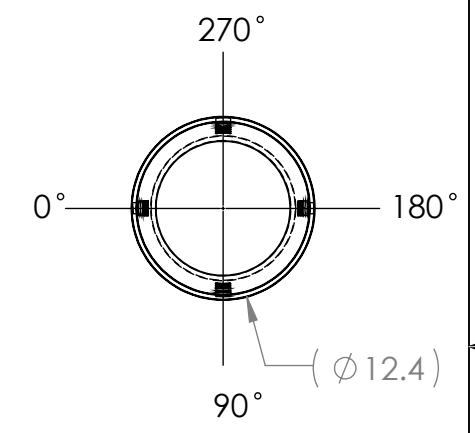
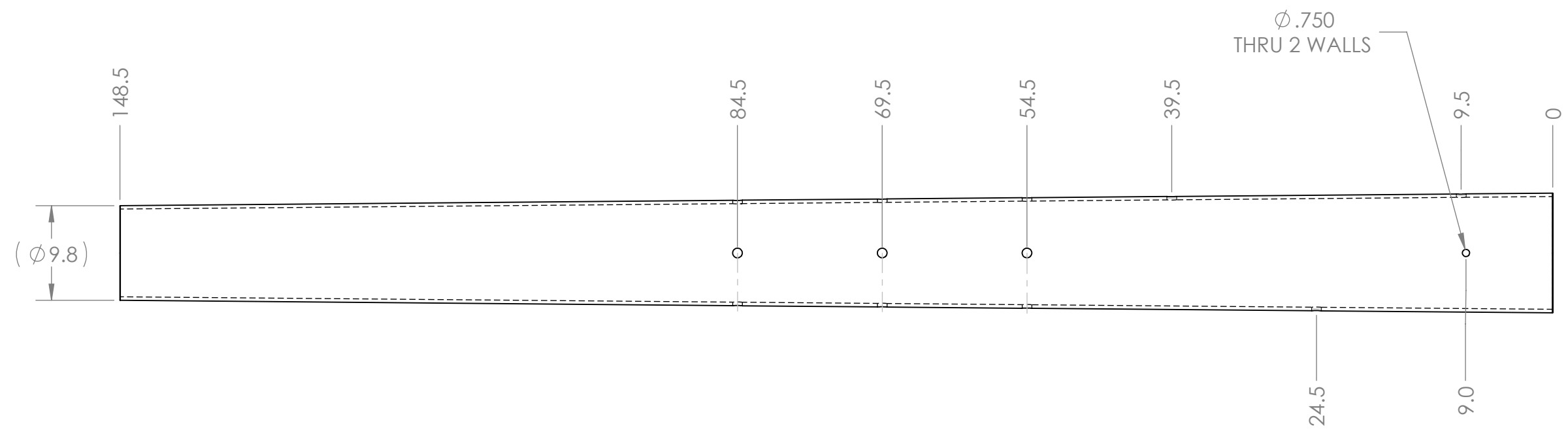
UNLESS OTHERWISE SPECIFIED DIMENSIONS ARE IN : INCHES	XX	+/- 1/4
	X/XX	+/- 1/32
ANGLES	+/- 1DEG	
CATALOG NO:	IP-1010-45-DD	
PART NO:		
CID NO:		
WEIGHT:	LBS	
SCALE 1:100	DO NOT SCALE SHEET	

DESCRIPTION:  
INTELLI-POLE, 45' 4 SECTION  
MODULAR FIBERGLASS POLE,  
DD STEP DRILL PATTERN

ENG APR:      DATE:



PAGE 1 OF 5	ORIGINAL DATE: 3/13/26
DRAWING NUMBER: <b>IP-1010-45FT-DD</b>	



LOC.	0°	90°	180°	270°	USE
9.0	3/4"		3/4"		DA BOLT
9.5				1"	STEP
24.5		1"			STEP
39.5				1"	STEP
54.5	1"	1"	1"	1"	STEP
69.5	1"	1"	1"	1"	STEP
84.5	1"	1"	1"	1"	STEP

IP-200-0001 SHOWN

This drawing contains confidential information that is the property of MacLean Power, L.L.C. ("MPS"). Use of MacLean's confidential information without MPS's express written consent is strictly prohibited and may expose you to legal liability. If you believe that you received this material in error, please destroy it or return it to "MPS, 481 Munn Rd East, Fort Mill, SC 29715, USA."

UNLESS OTHERWISE SPECIFIED  
DIMENSIONS ARE IN : INCHES

XX	+/- 1/4
X/XX	+/- 1/32
ANGLES	+/- 1DEG

SCALE 1:13 DO NOT SCALE SHEET

CATALOG NO:  
**IP-1010-45-DD**

PART NO:

CID NO:

WEIGHT:  
**LBS**

DESCRIPTION:  
INTELLI-POLE, 45' 4 SECTION  
MODULAR FIBERGLASS POLE,  
DD STEP DRILL PATTERN

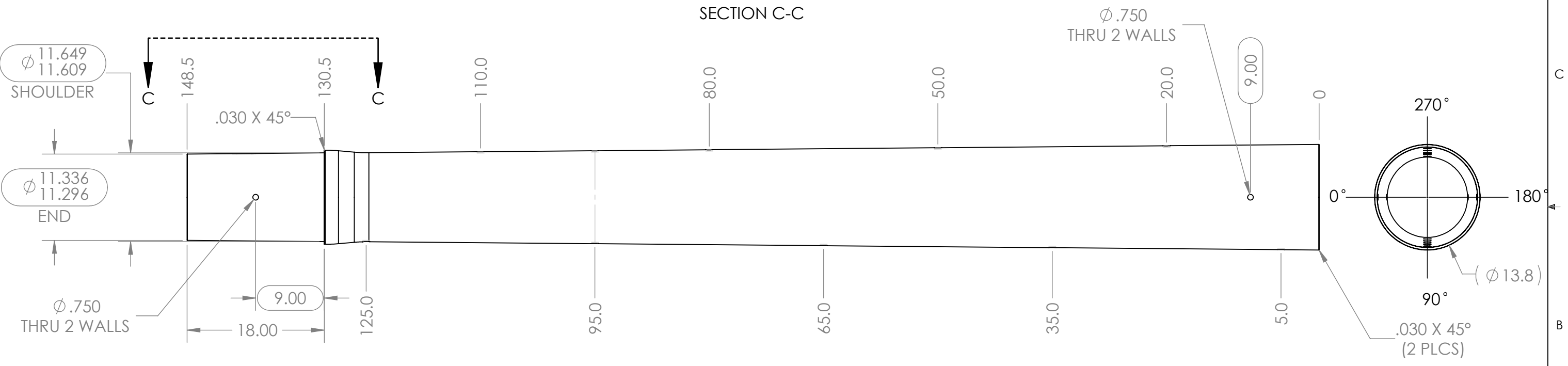
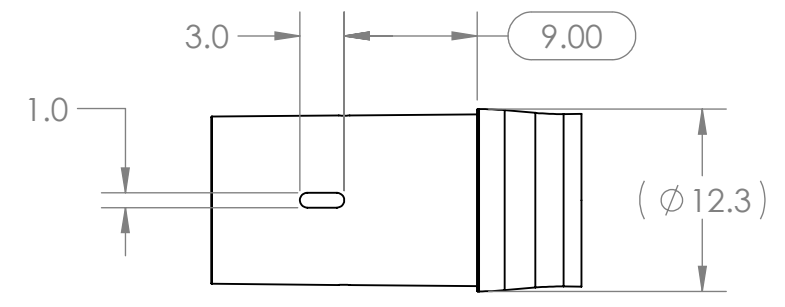
ENG APR:      DATE:



PAGE 2 OF 5 ORIGINAL DATE:  
**3/13/26**

DRAWING NUMBER:  
**IP-1010-45FT-DD**

NOTES:  
1) IF FIT CHECK GAUGE FAILS, MEASURE ACTUAL SIZE WITH PI TAPE.



LOC.	0°	90°	180°	270°	USE
5.0		1"			STEP
9.0	3/4"		3/4"		DA BOLT
20.0				1"	STEP
35.0		1"			STEP
50.0				1"	STEP
65.0		1"			STEP
80.0				1"	STEP
95.0		1"		1"	STEP
110.0				1"	STEP
125.0		1"			STEP

IP-200-0002 SHOWN

This drawing contains confidential information that is the property of MacLean Power, L.L.C. ("MPS"). Use of MacLean's confidential information without MPS's express written consent is strictly prohibited and may expose you to legal liability. If you believe that you received this material in error, please destroy it or return it to "MPS, 481 Munn Rd East, Fort Mill, SC 29715, USA."

UNLESS OTHERWISE SPECIFIED  
DIMENSIONS ARE IN: INCHES

XX	+/- 1/4
X/XX	+/- 1/32
ANGLES	+/- 1DEG

SCALE 1:13 DO NOT SCALE SHEET

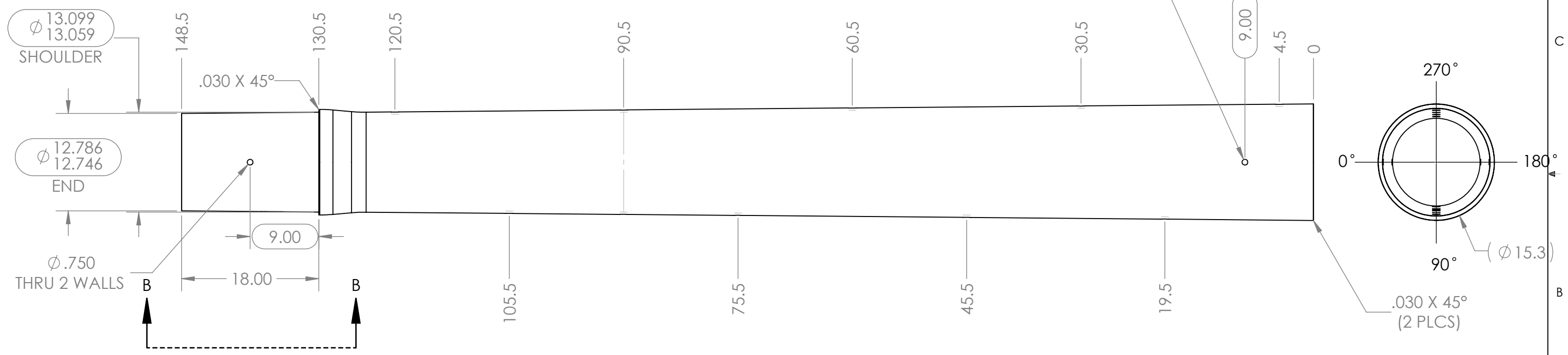
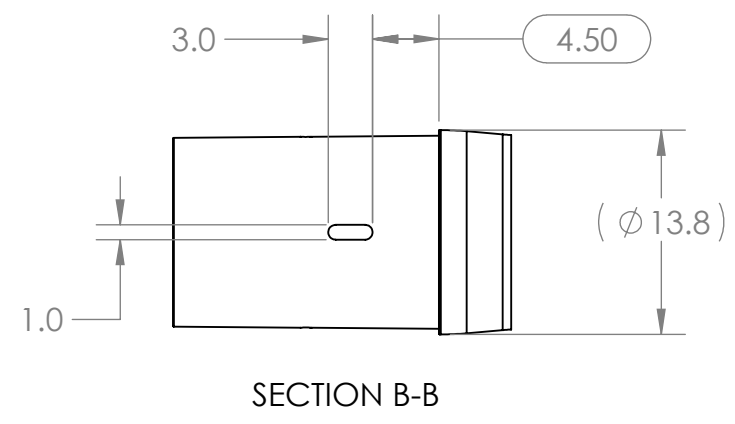
CATALOG NO: IP-1010-45-DD  
PART NO:  
CID NO:  
WEIGHT: LBS

DESCRIPTION: INTELLI-POLE, 45' 4 SECTION MODULAR FIBERGLASS POLE, DD STEP DRILL PATTERN  
ENG APR: DATE:

**MacLean**<sup>TM</sup>  
POWER SYSTEMS  
481 Munn Rd East, Fort Mill, SC 29715  
WWW.MACLEANPOWER.COM

PAGE 3 OF 5 ORIGINAL DATE: 3/13/26  
DRAWING NUMBER: IP-1010-45FT-DD

NOTES:  
1) IF FIT CHECK GAUGE FAILS, MEASURE ACTUAL SIZE WITH PI TAPE.



LOC.	0°	90°	180°	270°	USE
4.5				1"	STEP
9.0	3/4"		3/4"		DA BOLT
19.5		1"			STEP
30.5				1"	STEP
45.5		1"			STEP
60.5				1"	STEP
75.5		1"			STEP
90.5		1"		1"	STEP
105.5		1"			STEP
120.5				1"	STEP

IP-200-0003 SHOWN

This drawing contains confidential information that is the property of MacLean Power, L.L.C. ("MPS"). Use of MacLean's confidential information without MPS's express written consent is strictly prohibited and may expose you to legal liability. If you believe that you received this material in error, please destroy it or return it to "MPS, 481 Munn Rd East, Fort Mill, SC 29715, USA."

UNLESS OTHERWISE SPECIFIED  
DIMENSIONS ARE IN: INCHES

XX	+/- 1/4
X/XX	+/- 1/32
ANGLES	+/- 1DEG

SCALE 1:13 DO NOT SCALE SHEET

CATALOG NO:  
**IP-1010-45-DD**

PART NO:

CID NO:

WEIGHT:  
**LBS**

DESCRIPTION:  
INTELLI-POLE, 45' 4 SECTION  
MODULAR FIBERGLASS POLE,  
DD STEP DRILL PATTERN

ENG APR:

DATE:

**MacLean**<sup>TM</sup>  
POWER SYSTEMS  
481 Munn Rd East, Fort Mill, SC 29715  
WWW.MACLEANPOWER.COM

PAGE 4 OF 5 ORIGINAL DATE:  
**3/13/26**

DRAWING NUMBER:  
**IP-1010-45FT-DD**

