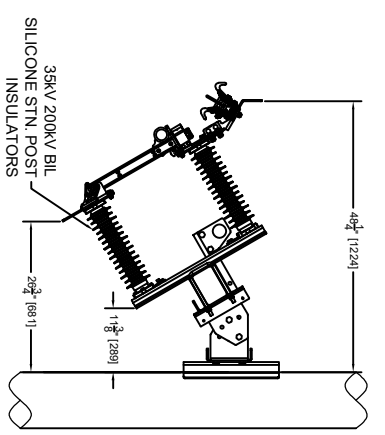
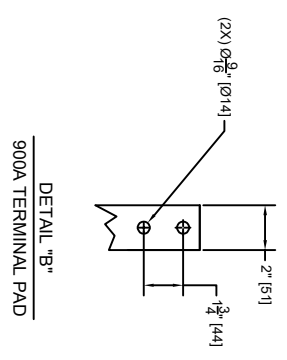
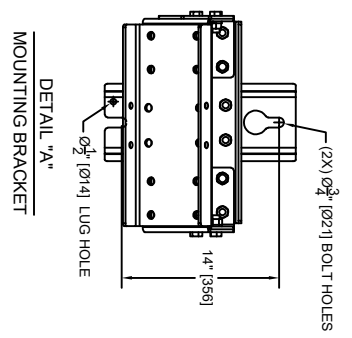
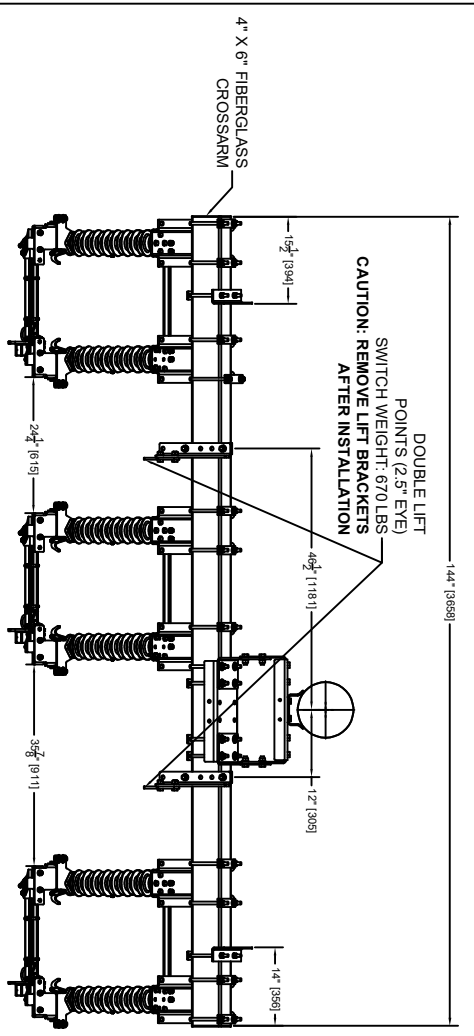


DRAWING NO. **9760-10** REVISION NO. **02**



02	10638	UPDATED TITLE BLOCK	05/27/26	JLG
01	10484	REVISE SWITCH RATINGS	02/10/26	TK
00	10458	INITIAL RELEASE	01/23/26	TK
REV.#	EC#	REVISION DESCRIPTION	DATE	BY

THIS IS A PROPRIETARY AND CONFIDENTIAL DOCUMENT OF INERTIA ENGINEERING AND MACHINE WORKS INC., STOCKTON CA. THIS DOCUMENT CANNOT BE COPIED IN WHOLE OR IN PART WITHOUT THE EXPRESS PERMISSION OF INERTIA ENGINEERING. THE DOCUMENT IS PROTECTED BY US FEDERAL COPYRIGHT LAW.

SWITCH DESCRIPTION		CONSTRUCTION DRAWING	
SWITCH # : RB39SXFRR60		DATE : 01/23/2026	SCALE : NTS
DESCRIPTION : 3-PHASE RECLOSER / REGULATOR BYPASS DISCONNECT SWITCH, 38kV, 900A, 200kV B.I.L. RATING, 12 FT. FIBERGLASS XARM, SPECIAL SPACING		DRAWING NO. 9760-10	DRAWN BY : TK
			REVISION NO. 02

SWITCH RATINGS

VOLTAGE CLASS: 38kV
 B.I.L. RATING: 200kV
 CONTINUOUS CURRENT: 900A-RMS (IEEE C37.30)
 MOMENTARY CURRENT: 40,000 AMP, 10 CYCLES
 25,000 AMP, 3 SECONDS
 SWITCH LIFTING WEIGHT: 670 POUNDS

