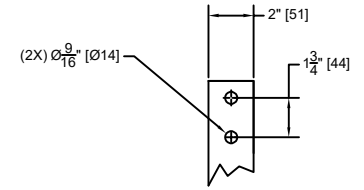
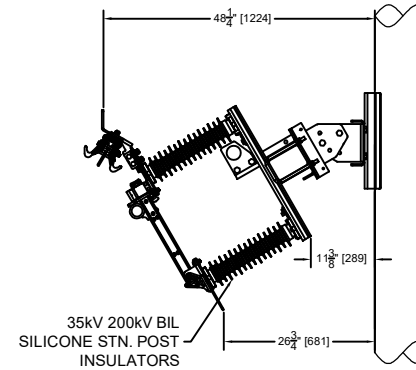
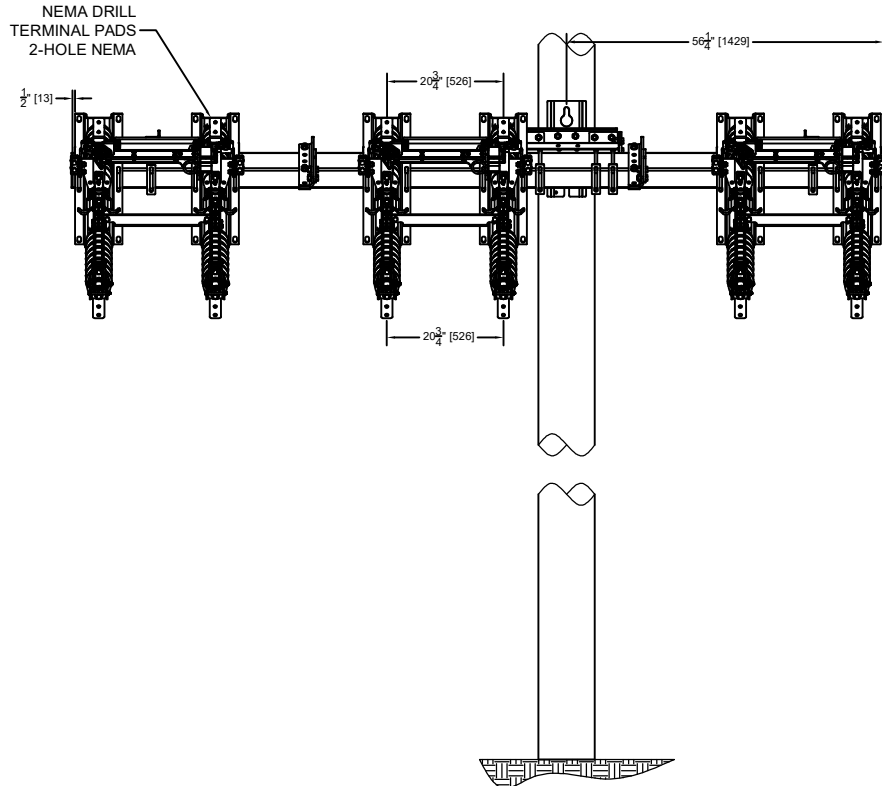


DETAIL "A"
MOUNTING BRACKET



DETAIL "B"
900A TERMINAL PAD



SWITCH RATINGS

VOLTAGE CLASS: 35kV
 B.I.L. RATING: 200kV
 CONTINUOUS CURRENT: 900A-RMS (IEEE C37.30)

MOMENTARY CURRENT: 40,000 AMP, 10 CYCLES
 25,000 AMP, 3 SECONDS

SWITCH LIFTING WEIGHT: 670 POUNDS

REV. #	EC#	REVISION DESCRIPTION	DATE	BY
01	10484	REVISE SWITCH RATINGS	02/10/26	TK
00	10458	INITIAL RELEASE	01/23/26	TK

REVISIONS

THIS IS A PROPRIETARY AND CONFIDENTIAL DOCUMENT OF INERTIA ENGINEERING AND MACHINE WORKS INC., STOCKTON CA. THIS DOCUMENT CANNOT BE COPIED IN WHOLE OR IN PART WITHOUT THE EXPRESS PERMISSION OF INERTIA ENGINEERING. THE DOCUMENT IS PROTECTED BY US FEDERAL COPYRIGHT LAW.

**INERTIA ENGINEERING
 AND MACHINE WORKS**

SWITCH DESCRIPTION	CONSTRUCTION DRAWING		
SWITCH #: RB39SXFRC60 DESCRIPTION: 3-PHASE RECLOSER / REGULATOR BYPASS DISCONNECT SWITCH, 35kV, 900A, 200kV B.I.L. RATING, 12 FT. FIBERGLASS XARM, SPECIAL SPACING	DATE: 01/23/2026	SCALE: NTS	DRAWN BY: TK
	DRAWING NO.		REVISION NO.
	9760-10		01