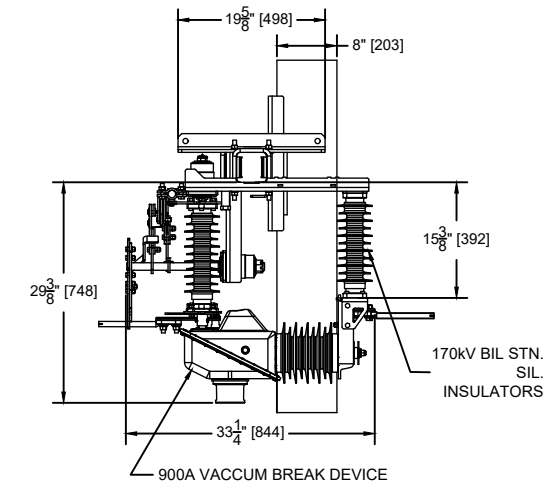
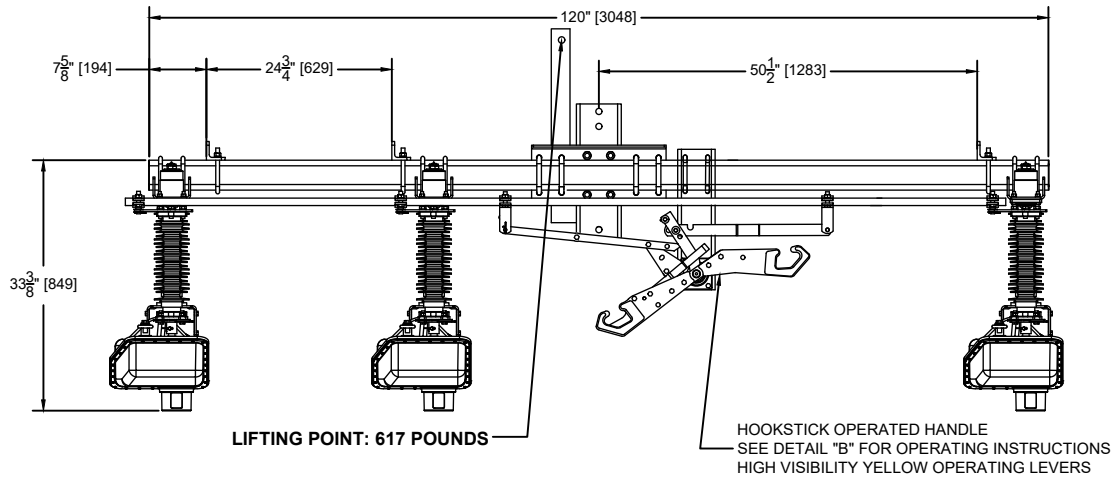


DETAIL A
MOUNTING BRACKET

NOTES
UNLESS OTHERWISE SPECIFIED:
1. ALL DIMENSIONS IN INCHES AND [MILLIMETERS]
2. DECIMAL DIMENSIONS TO X.XX = ± .25"
3. DECIMAL DIMENSIONS TO X.XXX = ± .125"
4. FRACTIONAL DIMENSIONS TO BE ± 1/8"
5. ANGLES TO BE ±2°

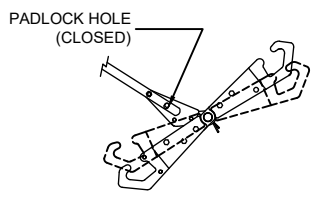


SWITCH RATINGS

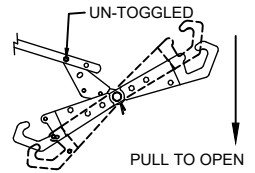
MAXIMUM VOLTAGE: 27kV
B.I.L. RATING: 150kV
POWER FREQUENCY: 60HZ
CONTINUOUS CURRENT: 900A-RMS (IEEE-C37.30.1-2022)
FAULT CLOSE: 20kA RMS-ASYMETRICAL, 5X
MOMENTARY CURRENT: 33.0KA, 10 CYCLES
12.5KA, 3 SECONDS

SWITCHING CURRENT CAPABILITIES:
LOADBREAK CURRENT: 900A-RMS
PARALLEL BREAK CURRENT: 900A-RMS
CABLE CHARGING CURRENT: 25A-RMS
LINE CHARGING CURRENT: 5A-RMS
EARTH FAULT SWITCHING CURRENT: 78A-RMS

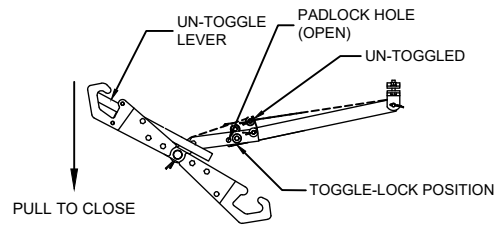
MECHANICAL CYCLE LIFE: 1000 OPERATIONS
ELECTRICAL CYCLE LIFE: 1000 OPERATIONS
SWITCH LIFTING WEIGHT: 617 LBS.



① SWITCH CLOSED AND TOGGLE LOCKED



② SWITCH CLOSED AND UN-TOGGLED



③ SWITCH OPEN TOGGLED LOCKED AND UNLOCKED

DETAIL B
HOOKSTICK OPERATION

THIS IS A PROPRIETARY AND CONFIDENTIAL DOCUMENT OF INERTIA ENGINEERING AND MACHINE WORKS INC., STOCKTON CA. THIS DOCUMENT CANNOT BE COPIED IN WHOLE OR IN PART WITHOUT THE EXPRESS PERMISSION OF INERTIA ENGINEERING. THE DOCUMENT IS PROTECTED BY US FEDERAL COPYRIGHT LAW.



SWITCH DESCRIPTION		CONSTRUCTION DRAWING		
SWITCH# V29SSUG3J78 LineBOSS-VX-VA, 25kV, 900A IEEE-IEC.		DATE: 03/24/26	SCALE: NTS	DRAWN BY: BC
INSTALLATION OF GANG OPERATED VACUUM BOTTLE (GOVB), HOOKSTICK OPERATED CONTROL		DRAWING NO.	REVISION NO.	
		9763-01	00	

REV. #	EC#	REVISION DESCRIPTION	DATE	BY
00	00	INITIAL RELEASE	03/24/26	BC

REVISIONS