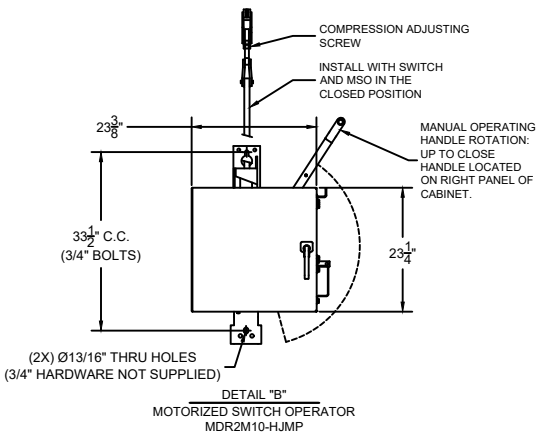
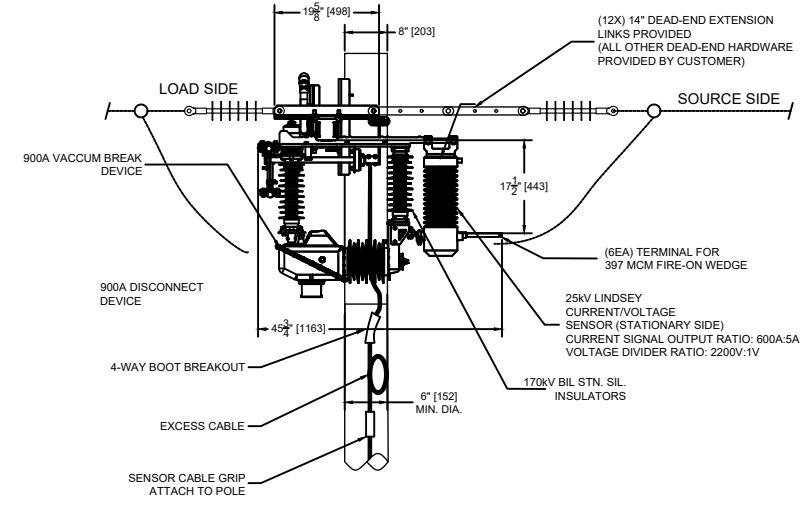
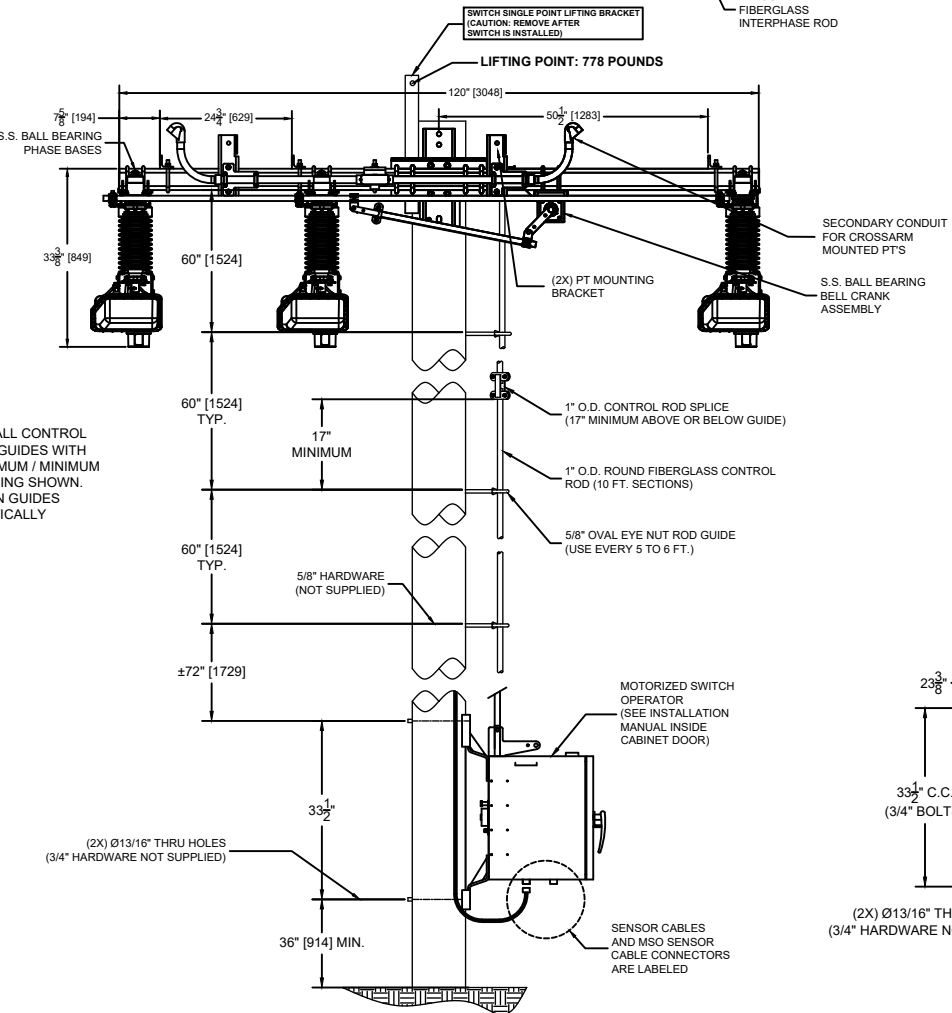


NOTES
UNLESS OTHERWISE SPECIFIED:
1. ALL DIMENSIONS IN INCHES AND [MILLIMETERS]
2. DECIMAL DIMENSIONS TO X.XX = ± .25"
3. DECIMAL DIMENSIONS TO X.XXX = ± .125"
4. FRACTIONAL DIMENSIONS TO BE ± 1/8"
5. ANGLES TO BE ± 2°



SWITCH RATINGS

MAXIMUM VOLTAGE: 27kV
B.I.L. RATING: 150kV
POWER FREQUENCY: 60HZ
CONTINUOUS CURRENT: 900A-RMS (IEEE-C37.30.1-2022)
FAULT CLOSE: 20kA RMS-ASYMETRICAL, 5X
MOMENTARY CURRENT: 33.0KA, 10 CYCLES
12.5KA, 3 SECONDS
SWITCHING CURRENT CAPABILITIES:
LOADBREAK CURRENT: 900A-RMS
PARALLEL BREAK CURRENT: 900A-RMS
CABLE CHARGING CURRENT: 25A-RMS
LINE CHARGING CURRENT: 5A-RMS
EARTH FAULT SWITCHING CURRENT: 78A-RMS
MECHANICAL CYCLE LIFE: 1000 OPERATIONS
ELECTRICAL CYCLE LIFE: 1000 OPERATIONS
SWITCH LIFTING WEIGHT: 778 LBS.

THIS IS A PROPRIETARY AND CONFIDENTIAL DOCUMENT OF INERTIA ENGINEERING AND MACHINE WORKS INC., STOCKTON CA. THIS DOCUMENT CANNOT BE COPIED IN WHOLE OR IN PART WITHOUT THE EXPRESS PERMISSION OF INERTIA ENGINEERING. THE DOCUMENT IS PROTECTED BY US FEDERAL COPYRIGHT LAW.



SWITCH DESCRIPTION		CONSTRUCTION DRAWING	
SWITCH# V29SSUGM23P3S. V29SSUGX23P3S LineBOSS-VX-VA, 25Kv, 900A IEEE-IEC.		DATE: 03/24/26	SCALE: NTS
INSTALLATION OF GANG OPERATED VACUUM BOTTLE (GOVB), W/ CURRENT/VOLTAGE SENSING, MSO OPERATED CONTROL		DRAWN BY: BC	REVISION NO.
		9763-03	00

00	00	INITIAL RELEASE	03/24/26	BC
REV. #	EC#	REVISION DESCRIPTION	DATE	BY
REVISIONS				