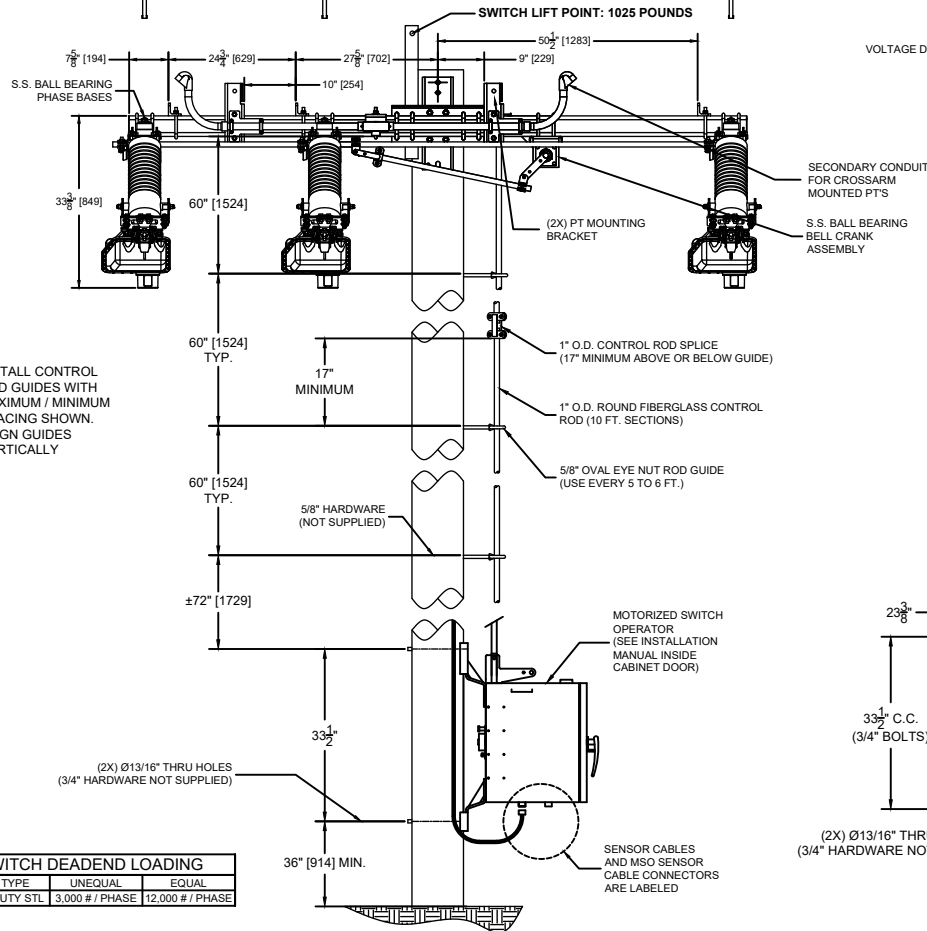
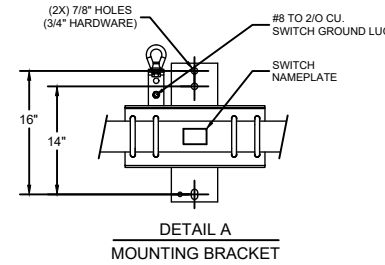
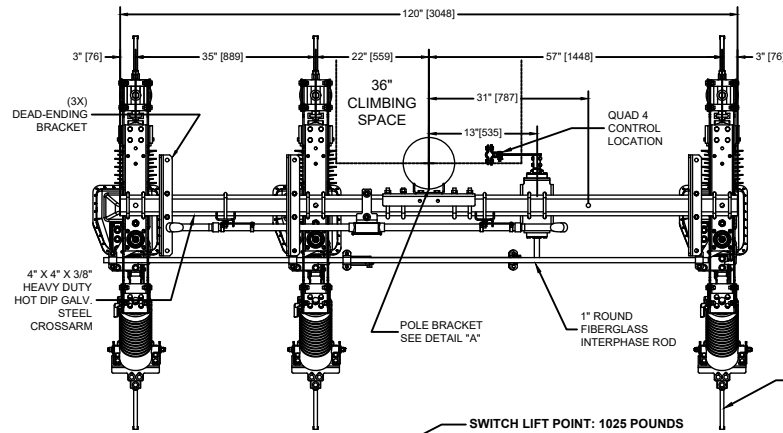
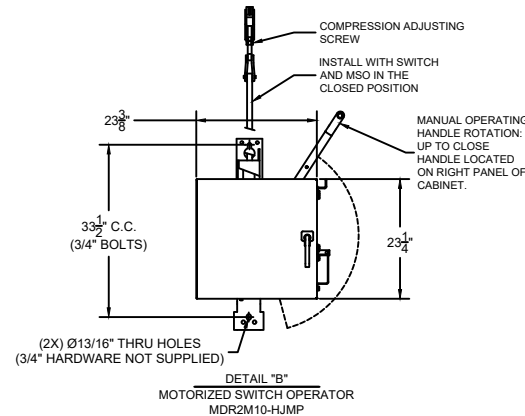
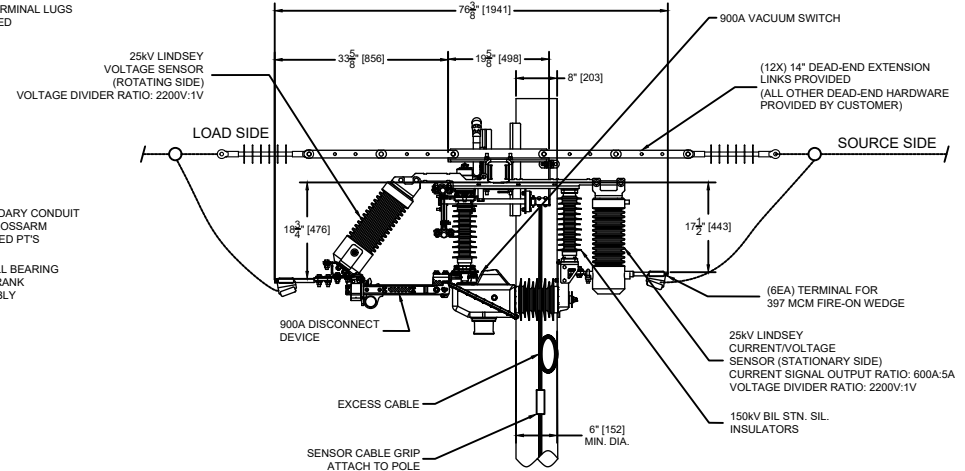


- NOTES**
- UNLESS OTHERWISE SPECIFIED:
1. ALL DIMENSIONS IN INCHES AND (MILLIMETERS)
 2. DECIMAL DIMENSIONS TO X.XX = ± .25"
 3. DECIMAL DIMENSIONS TO X.XXX = ± .125"
 4. FRACTIONAL DIMENSIONS TO BE ± 1/8"
 5. ANGLES TO BE ± 2°



INSTALL CONTROL ROD GUIDES WITH MAXIMUM / MINIMUM SPACING SHOWN. ALIGN GUIDES VERTICALLY

SWITCH DEADEND LOADING		
XARM TYPE	UNEQUAL	EQUAL
HEAVY DUTY STL	3,000 # / PHASE	12,000 # / PHASE



SWITCH RATINGS

MAXIMUM VOLTAGE: 27KV
 B.I.L. RATING: 150KV
 POWER FREQUENCY: 60HZ
 CONTINUOUS CURRENT: 900A-RMS (IEEE-C37.30.1-2022)
 FAULT CLOSE: 20KA RMS-ASYMETRICAL, 5X
 MOMENTARY CURRENT: 33.0KA, 10 CYCLES
 12.5KA, 3 SECONDS

SWITCHING CURRENT CAPABILITIES:
 LOADBREAK CURRENT: 900A-RMS
 PARALLEL BREAK CURRENT: 900A-RMS
 CABLE CHARGING CURRENT: 25A-RMS
 LINE CHARGING CURRENT: 5A-RMS
 EARTH FAULT SWITCHING CURRENT: 78A-RMS

MECHANICAL CYCLE LIFE: 1000 OPERATIONS
 ELECTRICAL CYCLE LIFE: 1000 OPERATIONS
 SWITCH LIFTING WEIGHT: 1025 LBS.

THIS IS A PROPRIETARY AND CONFIDENTIAL DOCUMENT OF INERTIA ENGINEERING AND MACHINE WORKS INC., STOCKTON CA. THIS DOCUMENT CANNOT BE COPIED IN WHOLE OR IN PART WITHOUT THE EXPRESS PERMISSION OF INERTIA ENGINEERING. THE DOCUMENT IS PROTECTED BY US FEDERAL COPYRIGHT LAW.



SWITCH DESCRIPTION		CONSTRUCTION DRAWING		
SWITCH# VD29SSUGM23P5S, VD29SSUGX23P5S LineBOSS-VD, 25KV, 900A IEEE C37.30.1-2022		DATE: 03/24/26	SCALE: NTS	DRAWN BY: BC
INSTALLATION OF GANG OPERATED VACUUM BOTTLE (GOVB), W/ DISCONNECT, BOTH CURRENT/VOLTAGE AND VOLTAGE SENSING, MSO OPERATED CONTROL		DRAWING NO. 9763-05	REVISION NO. 00	

REV. #	EC#	REVISION DESCRIPTION	DATE	BY
0	-	INITIAL RELEASE	03/24/26	EG
REVISIONS				