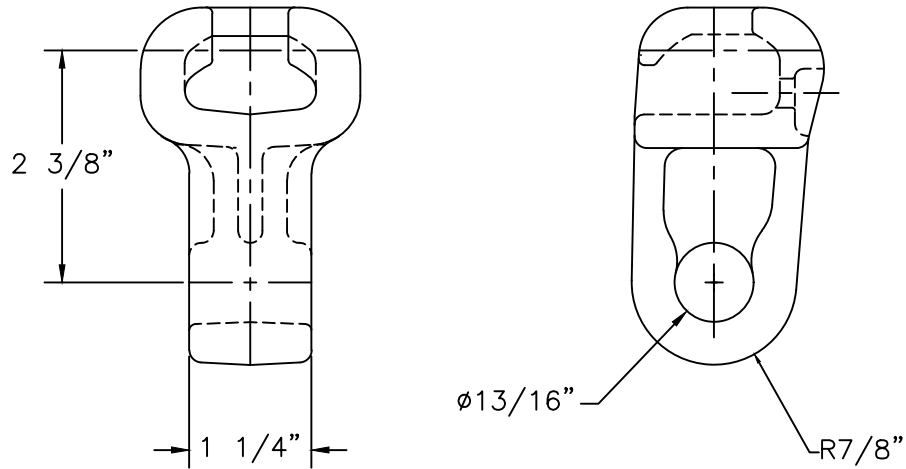


SOCKET FITS ANSI CLASS  
52-5 INSULATOR



NOTES:

1. MATERIAL:  
DUCTILE IRON, GRADE 604018  
B. COTTER PIN - AISI 302 STAINLESS STEEL
2. FINISH: HOT DIP GALVANIZED PER ASTM A153
3. ULTIMATE STRENGTH: 30,000 LBS.
4. WEIGHT: 1.59 LBS.

NO.	DATE	DESCRIPTION	BY	CKD
REVISIONS				

<b>MACLEAN POWER SYSTEMS</b> <i>A MacLean-Fogg Company</i>				
SOCKET EYE CATALOG NO. SE-1250-6				
DATE: 1/23/23	SCALE: NONE	NO.	R/0	SH.1
BY: BKS	BY:	AC-0220-15		OF 1