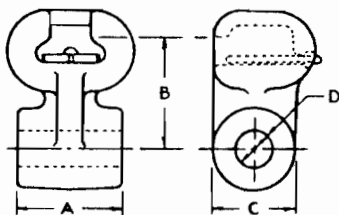


CATALOG NUMBER	ULTIMATE STRENGTH POUNDS	DIMENSIONS-INCHES				WGT. LBS. PER C.
		A	B	C	D	
SOCKET EYES FOR 5/8" DIAMETER CLEVIS PINS						
SE-500	16,000	1/2	2 3/16	1 9/16	11/16	109
SE-625	20,000	5/8	2 3/16	1 9/16	11/16	113
SE-750	30,000	3/4	2 3/16	1 7/8	11/16	140
SE-875	30,000	7/8	2 3/16	1 9/16	11/16	121
SE-1125	30,000	1 1/8	2 3/16	1 9/16	11/16	130
SE-1375	30,000	1 3/8	2 3/16	1 9/16	11/16	139
SE-1750	30,000	1 3/4	2 3/16	1 9/16	11/16	150
SE-2000	30,000	2	2 3/16	1 9/16	11/16	158
SE-2187	30,000	2 3/16	2 3/16	1 9/16	11/16	166
SE-2500	30,000	2 1/2	2 3/16	1 9/16	11/16	174

SOCKET EYES FOR 3/4" DIAMETER CLEVIS PINS						
SE-750-6	30,000	3/4	2 3/4	2	13/16	180
SE-875-6	30,000	7/8	2 3/16	1 9/16	13/16	121
SE-1000-6	30,000	1	2 3/8	1 3/4	13/16	185
SE-1625-6	30,000	1 5/8	3	1 3/4	13/16	195
SE-1750-6	30,000	1 3/4	2 11/16	1 5/8	13/16	240
SE-2750-6	30,000	2 3/4	2 3/16	1 9/16	13/16	260
SE-2187-6	30,000	2 3/16	2 3/16	1 9/16	13/16	166

THE FOLLOWING SOCKET EYES ARE AVAILABLE BUT ARE GENERALLY MANUFACTURED TO ORDER. PRICE AND DELIVERY UPON REQUEST.



CATALOG NUMBER	ULTIMATE STRENGTH POUNDS	DIMENSIONS-INCHES				WGT. LBS. PER C.
		A	B	C	D	

SOCKET EYES FOR 5/8" DIAMETER CLEVIS PINS						
SE-1000	30,000	1	2 3/8	1 3/4	11/16	190
SE-1500	30,000	1 1/2	2 3/16	1 9/16	11/16	180
SE-1625	30,000	1 5/8	2 3/16	1 9/16	11/16	185
SE-1625A	30,000	1 5/8	3	1 3/4	11/16	255
SE-2250A	30,000	2 1/4	3	1 3/4	11/16	265
SE-2312	30,000	2 5/16	2 3/16	1 9/16	11/16	218
SE-2500A	30,000	2 1/2	3	1 3/4	11/16	305
SE-2750	30,000	2 3/4	2 3/16	1 9/16	11/16	260
SE-3250	30,000	3 1/4	2 3/16	1 9/16	11/16	285

SOCKET EYES FOR 3/4" DIAMETER CLEVIS PINS						
SE-1375-6	30,000	1 3/8	3	1 3/4	13/16	235
SE-2000-6	30,000	2	3	2	13/16	230
SE-2312-6	30,000	2 5/16	2 3/16	1 9/16	13/16	245
SE-2500A-6	30,000	2 1/2	3	1 3/4	13/16	255

SOCKET EYES FOR LARGER DIAMETER CLEVIS PINS						
SE-1250-8	30,000	1 1/4	2 1/2	2	1 1/16	235
SE-2000-7	30,000	2	3	2	15/16	225

SUGGESTED SOCKET EYES FOR USE WITH *ARMOR-GRIP SUSPENSION FITTINGS

*ARMOR-GRIP CONDUCTOR RANGE INCHES	BETHEA/NATIONAL SOCKET EYES CATALOG NUMBER	ULTIMATE STRENGTH POUNDS
.304 - .645	SE-500	16,000
.646 - .750	SE-625	20,000
.751 - 1.005	SE-750	30,000
1.006 - 1.208	SE-1125	30,000
1.209 - 1.557	SE-1000-6	30,000
1.558 - 1.828	SE-2000-6	30,000

*Trademark Performed Line Products Company

RELIABLE/BETHEA POWER PRODUCTS INC.			
PELHAM, ALABAMA			
TYPE SE			
Socket Eye			
NO.	DATE	DESCRIPTION	BY CKD
1	11-1-85	ADDED SE-2187-G	BI BC
REVISIONS			
DATE: 2-6-79		SCALE: NONE	NO. AC-0220
VLP		BI	R/1 SH. 2 OF 5