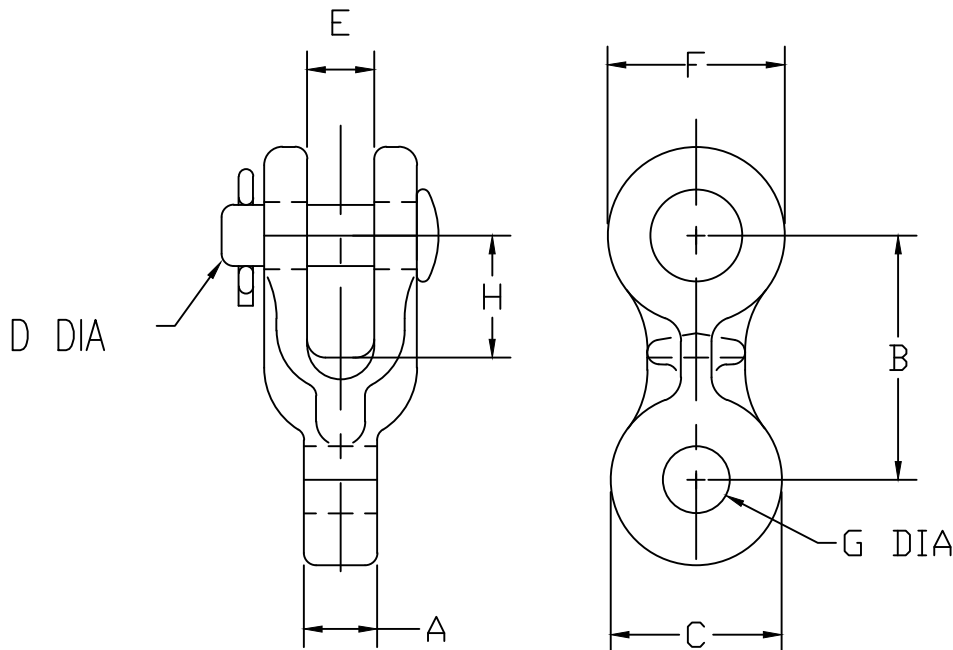


CAT NO.	A	B	C	D	E	F	G	H	ULT. STRENGTH
SCE-55-1750	1.750	2.875	1.438	0.625	0.688	1.625	0.688	1.375	30,000
SCE-55-2187	2.187	2.875	1.625	0.625	0.688	1.875	0.688	1.438	30,000
SCE-55-2500	2.500	2.875	1.625	0.625	0.688	1.875	0.688	1.188	30,000
SCE-55-625	0.625	2.875	1.938	0.625	0.813	1.625	0.688	1.375	25,000
SCE-55-875	0.875	2.875	1.750	0.625	0.688	1.625	0.688	1.375	25,000
SCE-56-1125	1.125	3.125	1.875	0.625	0.875	1.750	0.813	1.500	30,000
SCE-56-1625	1.625	2.875	1.500	0.625	0.813	1.750	0.813	1.688	30,000
SCE-56-1750	1.750	2.875	1.438	0.625	0.688	1.625	0.813	1.375	30,000
SCE-66-1625	1.625	2.875	1.750	0.750	0.875	2.000	0.813	1.750	35,000



NOTES:

1. MATERIAL:
 - A. BODY - DUCTILE IRON
 - B. CLEVIS PIN - STEEL, PER ASTM A449
 - C. COTTER PIN - AISI 302 STAINLESS STEEL
2. FINISH: ALL FERROUS PARTS HOT DIP GALVANIZED PER ASTM A153
3. FOR BOLT, NUT, & COTTER ADD SUFFIX -BC TO CATALOG NUMBER

NO.	DATE	DESCRIPTION	BY	CHKD
1	09/16/23	REDRAWN IN ACAD	JM	
REVISIONS				

MACLEAN POWER SYSTEMS
A MacLean-Fogg Company

CLEVIS EYE

DATE: 4/12/70

SCALE: NONE

NO. AC-6390

R/1

SH.1 OF 1

DWN. BY: JEM

CKD. BY:

APR. BY: