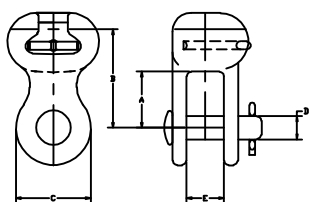


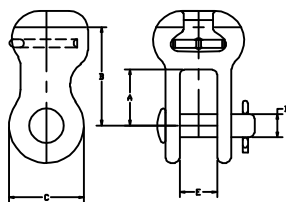
This information is confidential and is the property of Maclean Power Systems. It may not be made public or reproduced except that the Customer may make copies for use solely in installation, maintenance, and operation of products supplied by Maclean Power Systems.

NO. AC6438-3

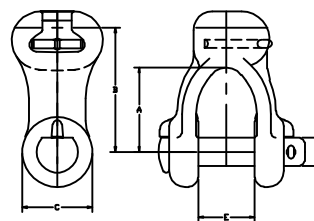
## TYPE SC & SCR - SOCKET CLEVISES



**FIG. 1**



**FIG. 2**



**FIG. 3**

DUCTILE IRON - HOT DIP GALVANIZED

CATALOG NUMBER	ULTIMATE STRENGTH	FOR INSULATOR CLASS	FIGURE NUMBER	DIMENSIONS - INCHES					WEIGHT LBS./C
				A	B	C	D	E	
SC-55	30,000 LBS.	*ANSI 52-3 & 5	1	1 1/2	2 5/8	2	5/8	15/16	200
CSS90-55	30,000 LBS.	*ANSI 52-3 & 5	1	1 5/8	2 5/8	1 3/4	5/8	13/16	226
SCR-55	30,000 LBS.	*ANSI 52-3 & 5	2	1 1/2	2 5/8	2	5/8	1	197
SCR-87	50,000 LBS.	ANSI 52-8 & 11	2	2 1/4	4 1/2	2	7/8	1 1/8	460
SC-86	45,000 LBS.	ANSI 52-8	1	2	3 1/4	2 1/8	3/4	1 1/4	240
SC-55A	30,000 LBS.	*ANSI 52-3 & 5	3	1 1/8	2 1/4	1 3/4	5/8	1 3/16	220
SC-87A	40,000 LBS.	ANSI 52-8	3	2 3/16	3 3/8	2 1/8	7/8	1 11/16	330
SC-87B	50,000 LBS.	ANSI 52-8 & 11	3	2 1/4	4 1/2	2	7/8	1 7/16	345
SC-56	30,000 LBS.	*ANSI 52-3 & 5	1	1 1/2	2 5/8	2	3/4	15/16	310
SC-56A	30,000 LBS.	*ANSI 52-3 & 5	3	2 1/4	3 3/8	1 7/8	3/4	1 1/2	264
SCR-87A	50,000 LBS.	ANSI 52-8 & 11	2	2 1/4	4 1/2	2	7/8	1	460

\*ANSI 52-5 & IEC 16mm ARE GENERALLY ACCEPTED AS BEING INTERCHANGEABLE  
 FOR SPHERE NUT ADD SUFFIX "-S" TO CAT. NO.  
 FOR BOLT, NUT & COTTER INSTEAD OF CLEVIS PIN & COTTER, SPECIFY BY ADDING SUFFIX "-BC" TO CAT. NO.

5	03-01-13	RE-DRAWN IN A-CAD	LV	BS
4	07-28-95	ADDED NOTE FOR SPHERE NUT	BS	BC
3	06-01-95	ADDED SCR-87A	BS	BC
2	12-18-84	SCR-87"E" DIM WAS 15/16"	BI	BC
1	10-10-84	RE-DRAWN	BI	
NO.	DATE	DESCRIPTION	BY	CKD

REVISIONS



**MACLEAN POWER SYSTEMS**  
*A Maclean-Logg Company*

## SOCKET CLEVISES

DATE: 03/01/13	SCALE:	NO. AC6438-3	R/5	SH.1 OF 1
BY: LMV	BY: WCL	BY: WCL		