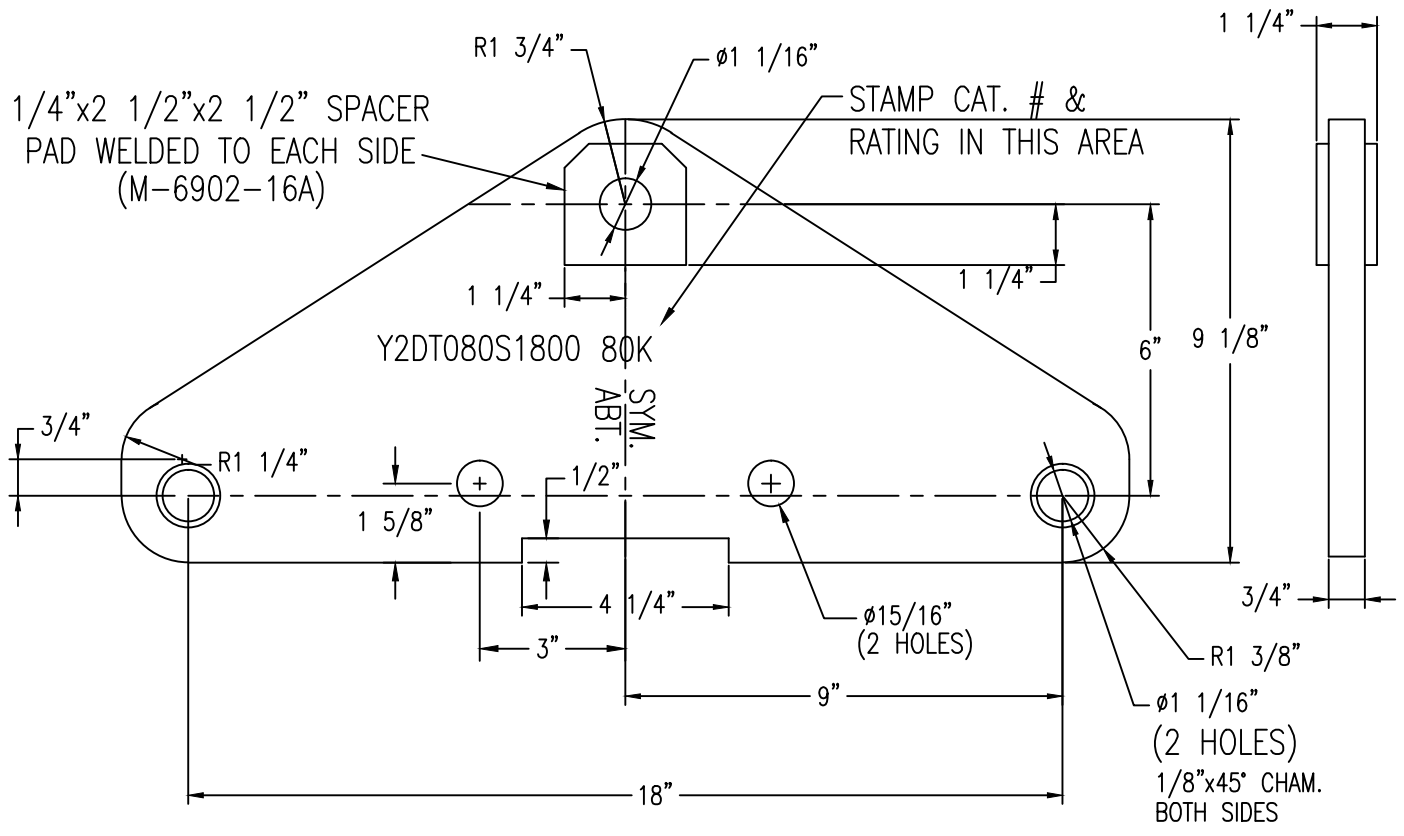
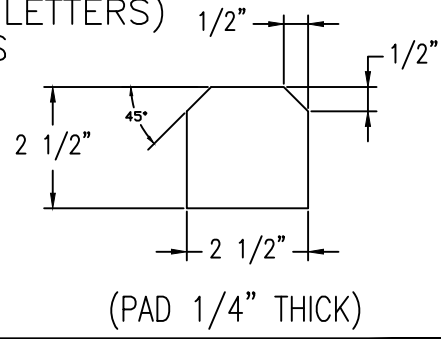


| STANDARD TOLERANCES (UNLESS OTHERWISE NOTED) | | | |
|---|------------------------------|------------------|----------------|
| | DECIMAL (IN) | FRACTIONS (IN) | ANGLES (DEG) |
| MACHINE | .XX ±.01 .XXX ±.005 | + 1/64 - 1/64 | + 1/2 - 1/2 |
| FABRICATION | | + 1/16 - 1/16 | + 1 - 1 |
| CASTING/FORGING | + 0.031 - 0.031 | + 1/32 - 1/32 | + 1/2 - 1/2 |



NOTES:

1. MATERIAL - STEEL, ASTM A572 GR. 50
HOT DIP GALVANIZED PER ASTM A153
2. ULTIMATE STRENGTH - 80,000 LBS.
3. MARKING - Y2DT080S1800, 80K (3/8" LETTERS)
4. REMOVE ALL BURRS AND RAGGED EDGES
5. ALL HOLES TO BE DRILLED
6. TO BE FLAME CUT, NO SHEARING
7. EST. WEIGHT 30 LBS



| NO. | DATE | DESCRIPTION | BY | CKD |
|-----------|---------|--------------------|-----|-----|
| 1 | 8/11/10 | Added marking 80K. | WCL | |
| REVISIONS | | | | |

BETHEA POWER PRODUCTS
PELHAM, ALABAMA A MacLean Power Systems Co.

TRIANGULAR DE STEEL YOKE
 CAT. NO. Y2DT080S1800

| | | | | |
|---------------|-------------|----------------|-----|-----------|
| DATE: 4/27/10 | SCALE: NONE | NO. AM-7360-66 | R/1 | SH.1 OF 1 |
| DWN. BY: WCL | CHKD. BY: | APP. BY: | | |