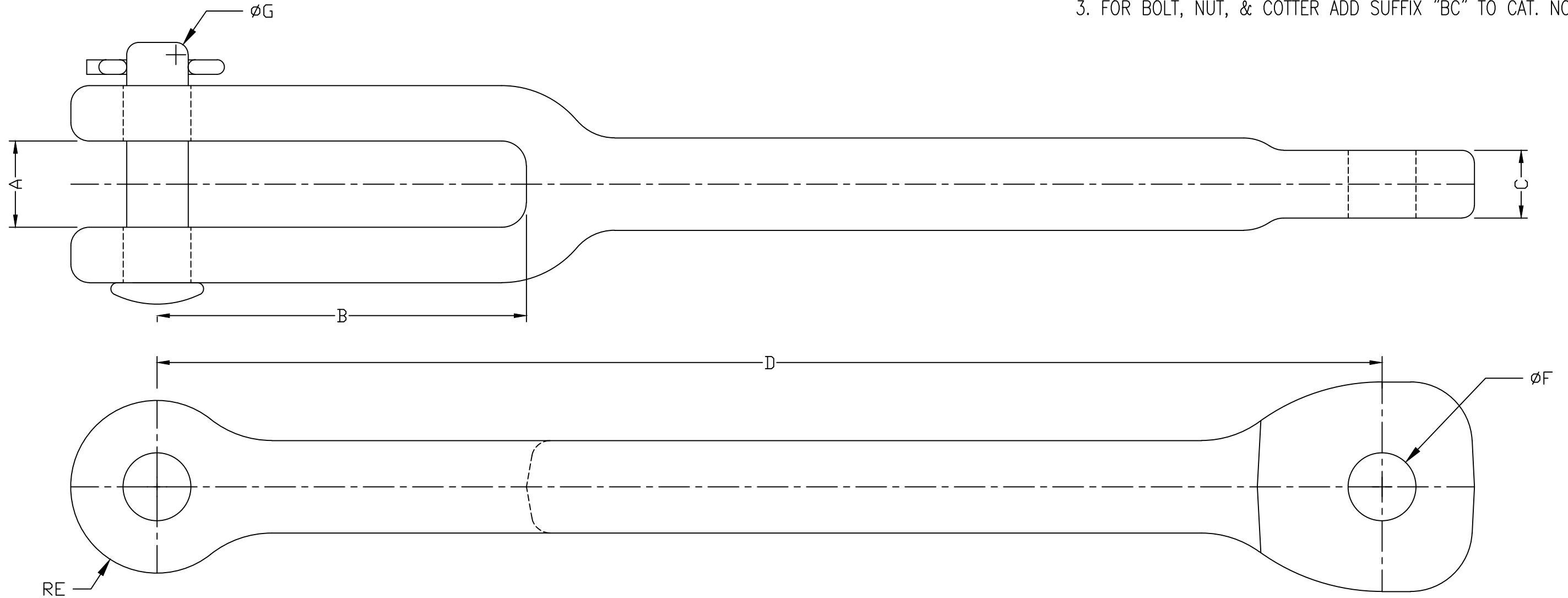


REVISIONS				
NO.	DATE	DESCRIPTION	BY	CKD
1	9/16/23	REDRAWN IN ACAD	JM	

NOTES:

- MATERIAL:
 - BODY - DUCTILE IRON
 - CLEVIS PIN - STEEL, PER ASTM A325 GR. 5
 - COTTER PIN - AISI 302 STAINLESS STEEL
- FINISH: HOT DIP GALVANIZED PER ASTM A-153.
- FOR BOLT, NUT, & COTTER ADD SUFFIX "BC" TO CAT. NO.



CAT NO.	A	B	C	D	E	F	G
SCEL-55-687	.875"	3.750"	.688"	7.438"	.875"	.688"	.625"
SCEL-55-687B	.875"	3.750"	.688"	12.438"	.875"	.688"	.625"
SCEL-68-1125	.875"	2.125"	1.125"	5.500"	1.062"	1.062"	.750"
SCEL-77-1125A	1.250"	2.000"	1.125"	11.000"	1.250"	.938"	.875"

MacLean Power Systems
BIRMINGHAM, ALABAMA

CLEVIS EYE EXTENSION

ENG. REF.

This information is confidential and is the property of Maclean Power Systems. It may not be made public or reproduced except that the Customer may make copies for use solely in installation, maintenance, and operation of products supplied by Maclean Power Systems.

DATE: 7/8/69	SCALE: NTS	NO. ASM-333	R 1	SH. 1
DWN. BY: RC	CKD. BY:	APR. BY:	OF 1	