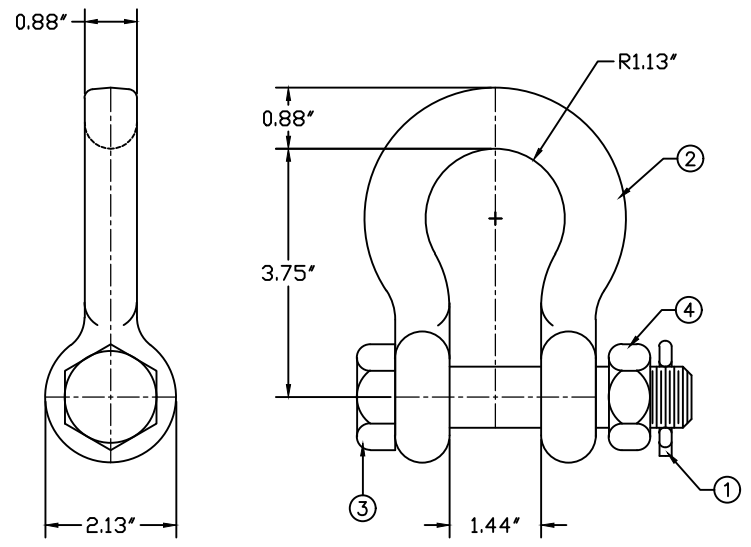


REVISIONS				
NO.	DATE	DESCRIPTION	BY	CKD
1	8/25/20	ADDED ASH-77-BC-CH1	BKS	

ITEM NO.	PART NO.	CAT. NO.	DESCRIPTION	QUANTITY			
				A	B	C	D
1	P56111	H-0360-03	COTTER PIN HMP	1	1		
2	P57012C	M-0335-41R-7C	ASH-77 BODY	1	1		
3	P56602	M-0070-72	7/8"Ø CLEVIS BOLT	1	1		
4	P56159	H-0402-07	7/8" HEX JAM NUT	1	1		

ASSEMBLY NUMBER	REF. NO.
ASH-77-BC	A
ASH-77-BC-CH1	B
-----	C
-----	D



CHARPY LEVEL 1: MEETS MIN ENERGY ABSORPTION OF 20J AT -20°C
(15 FT-LBS AT -4°F)

- NOTES:
- MATERIAL - BODY:
FORGED STEEL

HARDWARE: STEEL
BOLT, CLEVIS PIN, & NUT:
HOT DIP GALVANIZED PER
ASTM-A153

COTTER PIN:
AISI 302 STAINLESS STEEL
 - MARKING:
MPS M-335-41R-7

MACLEAN POWER SYSTEMS
A Maclean-fogg Company

ANCHOR SHACKLE
ULTIMATE STRENGTH 80,000 LBS.

ENG. REF.

This information is confidential and is the property of Maclean Power Systems. It may not be made public or reproduced except that the Customer may make copies for use solely in installation, maintenance, and operation of products supplied by Maclean Power Systems.

DATE: 12/14/2011	SCALE: NONE	NO.	BC8554-1	R / 1	SH. 1
DRAWN: CDR	CHKD: BR	APPR: BR			OF 1