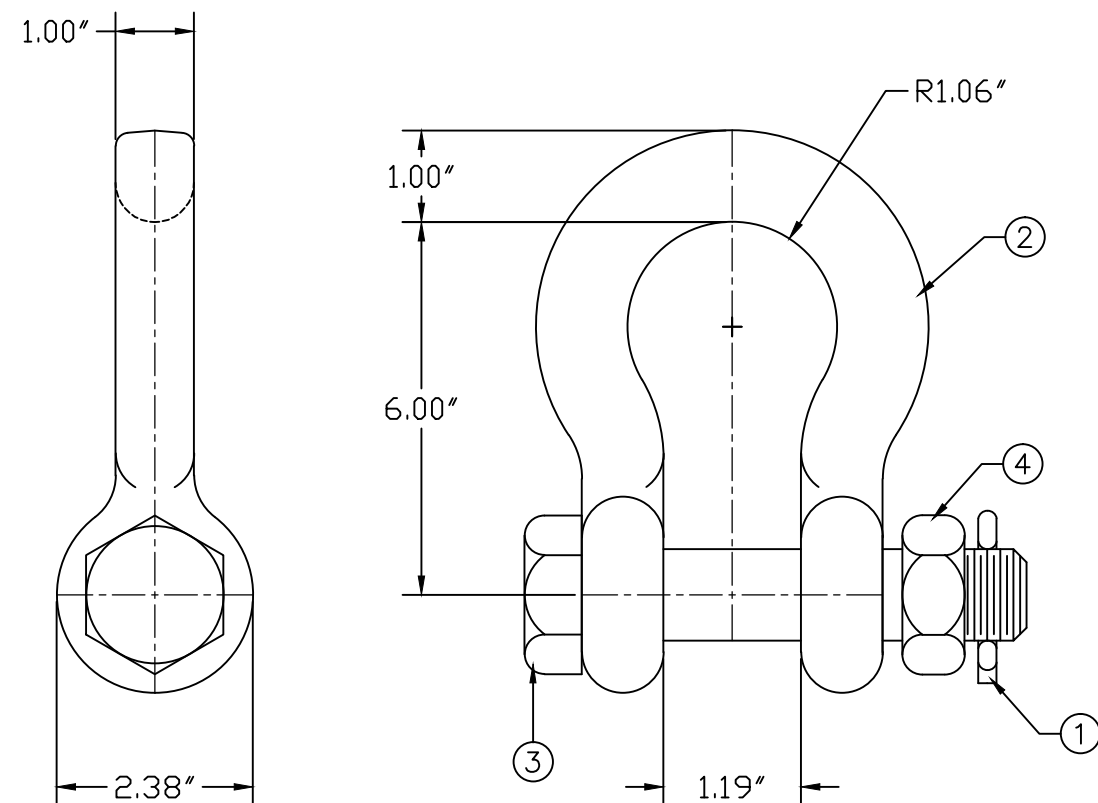


REVISIONS				
NO.	DATE	DESCRIPTION	BY	CKD

ITEM NO.	PART NO.	CAT. NO.	DESCRIPTION	QUANTITY			
				A	B	C	D
1	P56113	H-0360-06	COTTER PIN	1			
2	P57023C	M-0335-81C	ASH-89A BODY	1			
3	P58158	M-7078-04	1-1/8"Ø CLEVIS BOLT	1			
4	P56161	H-0402-09	1-1/8" HEX JAM NUT	1			

ASSEMBLY NUMBER	REF. NO.
ASH-89A-BC	A
-----	B
-----	C
-----	D




NOTES:
 1. MATERIAL – BODY:
 FORGED STEEL

 HARDWARE: STEEL
 BOLT, CLEVIS PIN, & NUT:
 HOT DIP GALVANIZED PER
 ASTM-A153

 COTTER PIN:
 AISI 302 STAINLESS STEEL

 2. MARKING:
 MPS M-335-81

 3. RATED STRENGTH – 100,000 LBS.

 MACLEAN POWER SYSTEMS <i>A Maclean-fogg Company</i>	
ANCHOR SHACKLE ASH-89A-BC	
DATE: 12/16/2011 DWN. BY: CDR	SCALE: NONE CKD. BY: WCL APR. BY: WCL
NO. BC-8568-1	R / 0 SH. 1 OF 1

This information is confidential and is the property of Maclean Power Systems. It may not be made public or reproduced except that the Customer may make copies for use solely in installation, maintenance, and operation of products supplied by Maclean Power Systems.

ENG. REF.