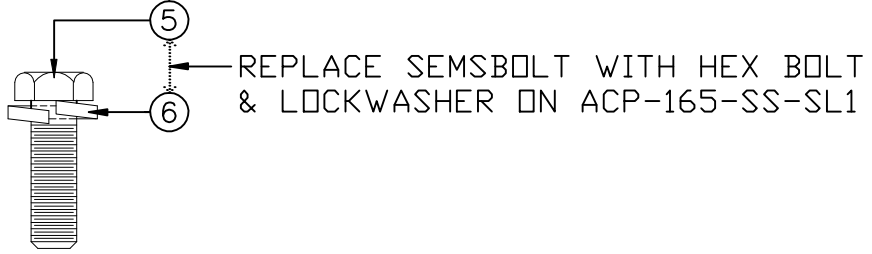
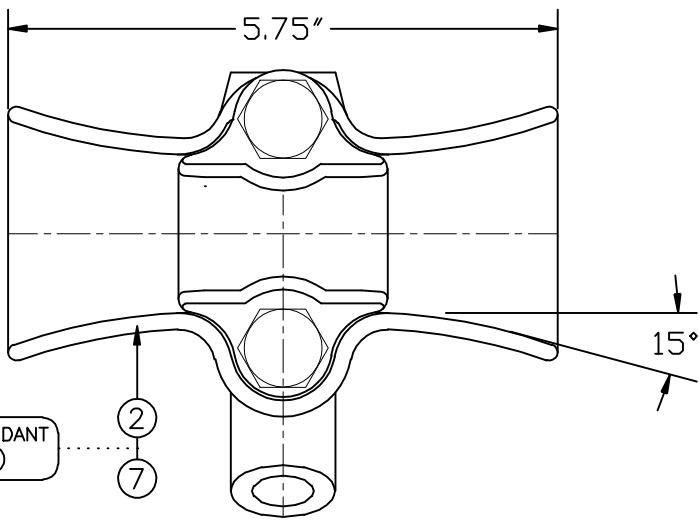


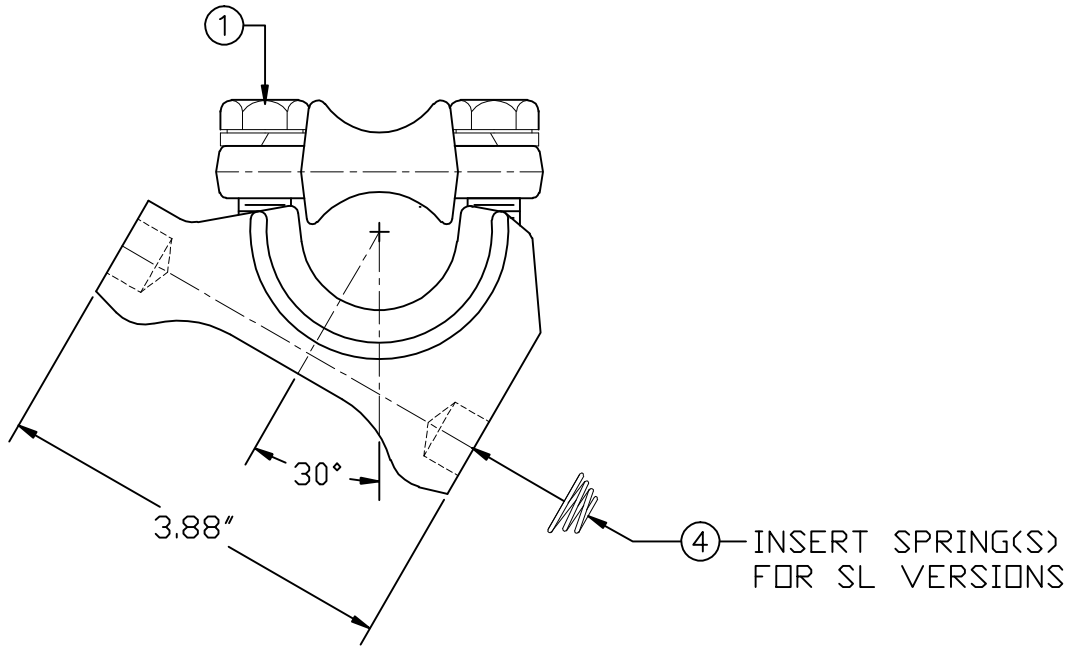
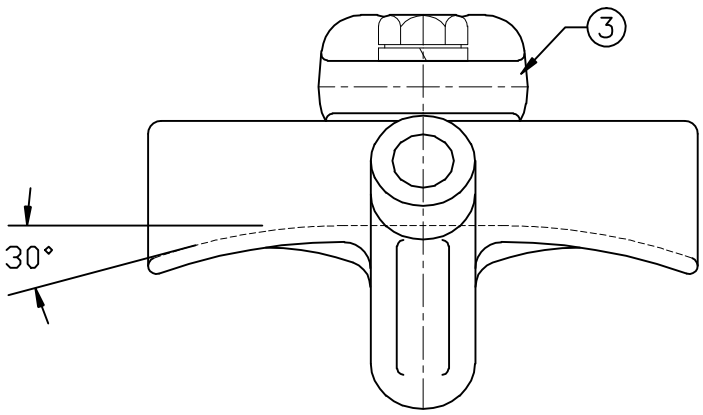
REVISIONS				
NO.	DATE	DESCRIPTION	BY	CKD



REPLACE SEMSBOLT WITH HEX BOLT & LOCKWASHER ON ACP-165-SS-SL1



ITEM NO. DEPENDANT (SEE CHART)



ITEM NO.	PART NO.	CAT. NO.	DESCRIPTION	QUANTITY			
				A	B	C	D
1	P56046	H-0241-02	1/2" SEMSBOLT	2	2	-	
2	P61459	*ACP-165-B	ACP165 BODY	1	1	-	
3	P61460	*ACP-165-K	ACP165 KEEPER	1	1	1	
4	P60279	H-0480-02	CONICAL COMPRESSION SPRING	-	1	1	
5	P55920	H-0153-02	1/2" x 2" SS HEX HEAD BOLT	-	-	2	
6	P56417	H-0522-04	1/2" SS LOCKWASHER	-	-	2	
7	P61459S	*ACP-165-ST-B	ACP-165 STANDARD TAP BODY	-	-	1	

ASSEMBLY NUMBER	REF. NO.
ACP-165	A
ACP-165-SL1	B
ACP-165-SS-SL1	C
	D

NOTES:  
 1. MATERIAL - BODY AND KEEPER:  
 A356-T6 ALUMINUM ALLOY  
  
 HARDWARE:  
 STEEL, HOT DIP GALVANIZED PER  
 ASTM-A153  
  
 SPRING:  
 STAINLESS STEEL  
  
 2. ULTIMATE STRENGTH: 5,000 LBS.  
  
 3. CLAMPING RANGE - 1.00" TO 1.65"



TOP LINE POST INSULATOR ANGLE CLAMP  
 ACP-165, ACP-165-SL1, ACP-165-SS-SL1

This information is confidential and is the property of Maclean Power Systems. It may not be made public or reproduced except that the Customer may make copies for use solely in installation, maintenance, and operation of products supplied by Maclean Power Systems.

ENG. REF.

DATE: 12/27/2011	SCALE: NONE	NO. BC8578-1	R / 0	SH. 1 / OF 1
DWN. BY: CDR	CKD. BY:	APR. BY:		