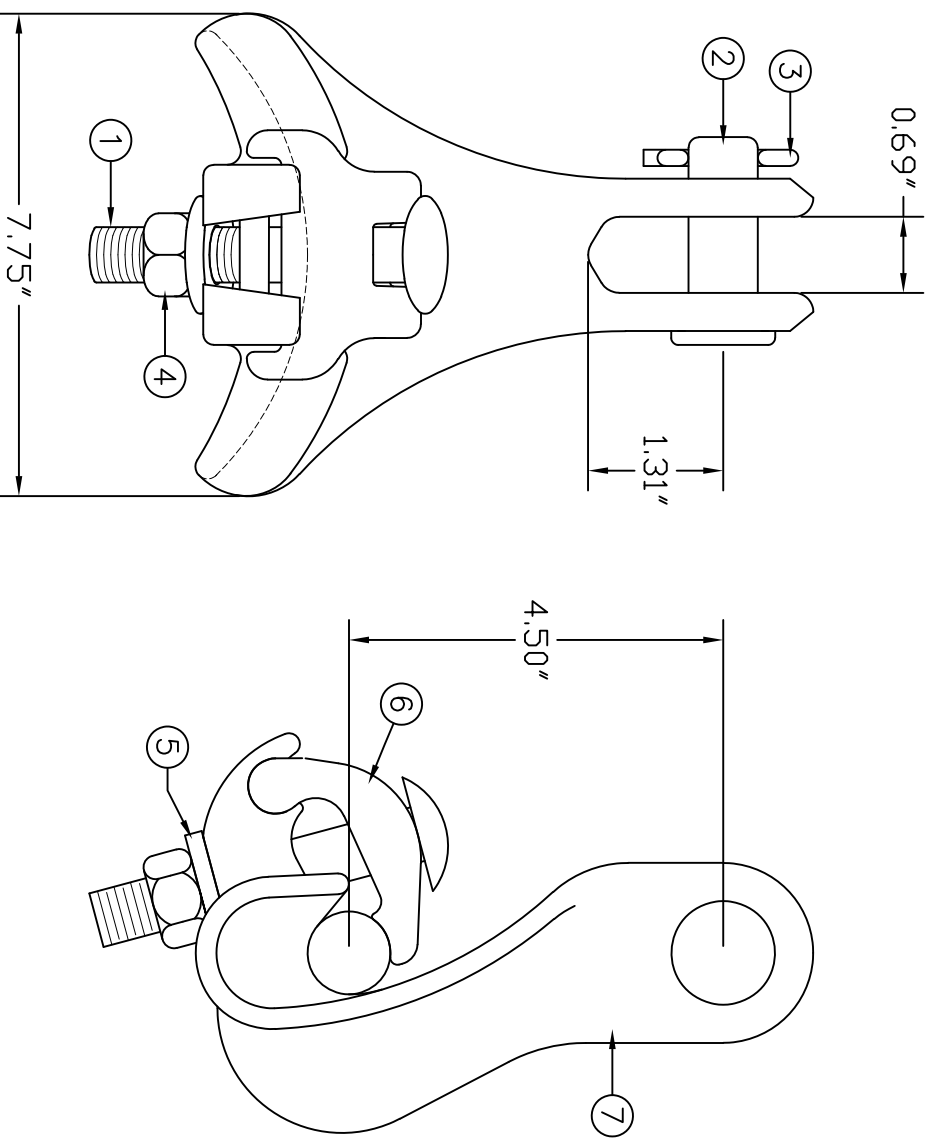
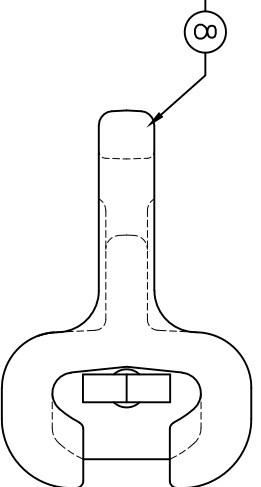


REVISIONS			
NO.	DATE	DESCRIPTION	BY OKD

ASSEMBLE SOCKET EYE TO
CLAMP BODY DN RALS-3-S-8



ITEM NO.	PART NO.	CAT. NO.	DESCRIPTION	QUANTITY			
				A	B	C	D
1	P55849	H-0123-05	1/2"x3-1/2" GR5 CARRIAGE BOLT	1	1		
2	P56057	H-0300-02	5/8"Ø CLEVIS PIN	1	1		
3	P56109	H-0360-01	COTTER PIN HMP 5/8"	1	1		
4	P56137	H-0400-04	1/2"-13 HEX NUT FIN	1	1		
5	P56294	H-0500-04	1/2" FLATWASHER	1	1		
6	P59152	P-0542	ALS-3 & RALS-3 KEEPER	1	1		
7	P59158	P-0544	RALS-3 BODY (CORE)	1	1		
8	P56893P	>SI-625	SOCKET EYE	-	1		

ASSEMBLY NUMBER	REF. NO.
RALS-3-N	A
RALS-3-S	B
	C
	D

NOTES:

1. MATERIAL - BODY & KEEPER:
ALUMINUM ALLOY A356-T6
2. ULTIMATE STRENGTH: 18,000 LBS.
3. CLAMPING RANGE - 1.02" TO 1.66"

HARDWARE:
STEEL, HOT DIP GALVANIZED PER
ASTM-A153

COTTER PIN:
STAINLESS STEEL



ANGLE SUSPENSION CLAMP
RALS-3-N, RALS-3-S

ENG. REF.

This information is confidential and is the property of Maclean Power Systems. It may not be made public or reproduced except that the Customer may make copies for use solely in installation, maintenance, and operation of products supplied by Maclean Power Systems.

DATE: 12/29/2011	SCALE: NONE	NO.	R / 0	SH. 1 OF 1
DNM. CDR	OKD	APR		
BY:				

BC8599-1