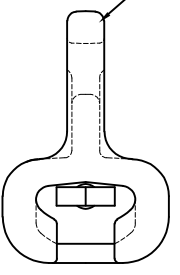
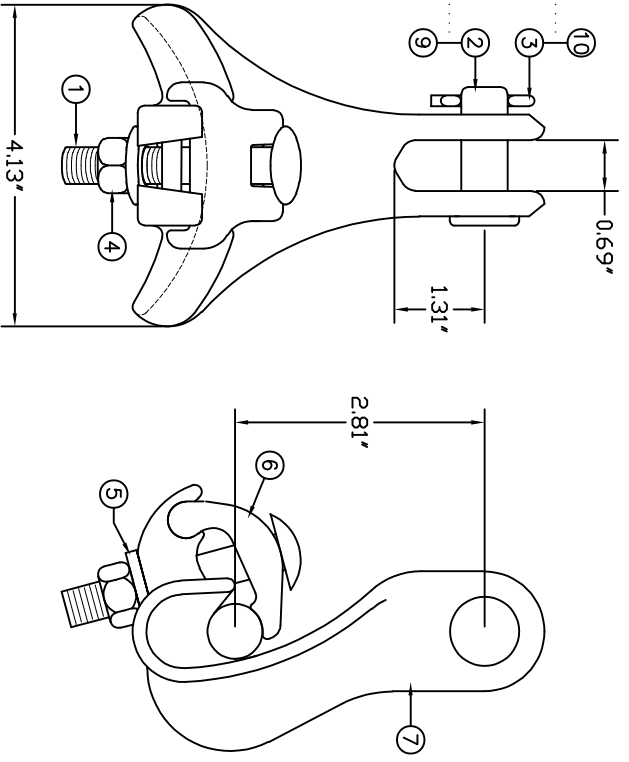


REVISIONS			
NO.	DATE	DESCRIPTION	BY / CMO

ASSEMBLE SOCKET EYE TO
CLAMP BODY DN AC-86-S (8)



ITEM NO. DEPENDANT
(SEE CHART)



ITEM NO.	PART NO.	CAT. NO.	DESCRIPTION	QUANTITY			
				A	B	C	D
1	P55848	H-0123-04	1/2"x3" GR5 CARRIAGE BOLT	1	1		
2	P56093	H-0315-02	5/8"φ x 7/8" CLEVIS PIN	1	1		
3	P56109	H-0360-01	COTTER PIN HMP 5/8"	1	1		
4	P56137	H-0400-04	1/2"-13 HEX NUT FIN	1	1		
5	P56294	H-0500-04	1/2" FLATWASHER	1	1		
6	P59078	*RALS-1K	ALS-1 & RALS-1 KEEPER	1	1		
7	P59142	P-0531	RALS-1 BODY CST	1	1		
8	P56893P	>SI625	SOCKET EYE	-	1		

ASSEMBLY NUMBER	REF. NO.
AC-86	A
AC-86-S	B
	C
	D

NOTE: SAME AS RALS-1N

- NOTES:
- MATERIAL - BODY & KEEPER: ALUMINUM ALLOY A356-T6
 - ULTIMATE STRENGTH: 10,000 LBS.
 - CLAMPING RANGE - 0.23" TO 0.86"
- HARDWARE:
STEEL, HOT DIP GALVANIZED PER ASTM-A153
- COTTER PIN:
STAINLESS STEEL

MACLEAN POWER SYSTEMS
A Maclean-fogg Company

ANGLE SUSPENSION CLAMP
AC-86

This information is confidential and is the property of Maclean Power Systems. It may not be made public or reproduced except that the Customer may make copies for use solely in installation, maintenance, and operation of products supplied by Maclean Power Systems.