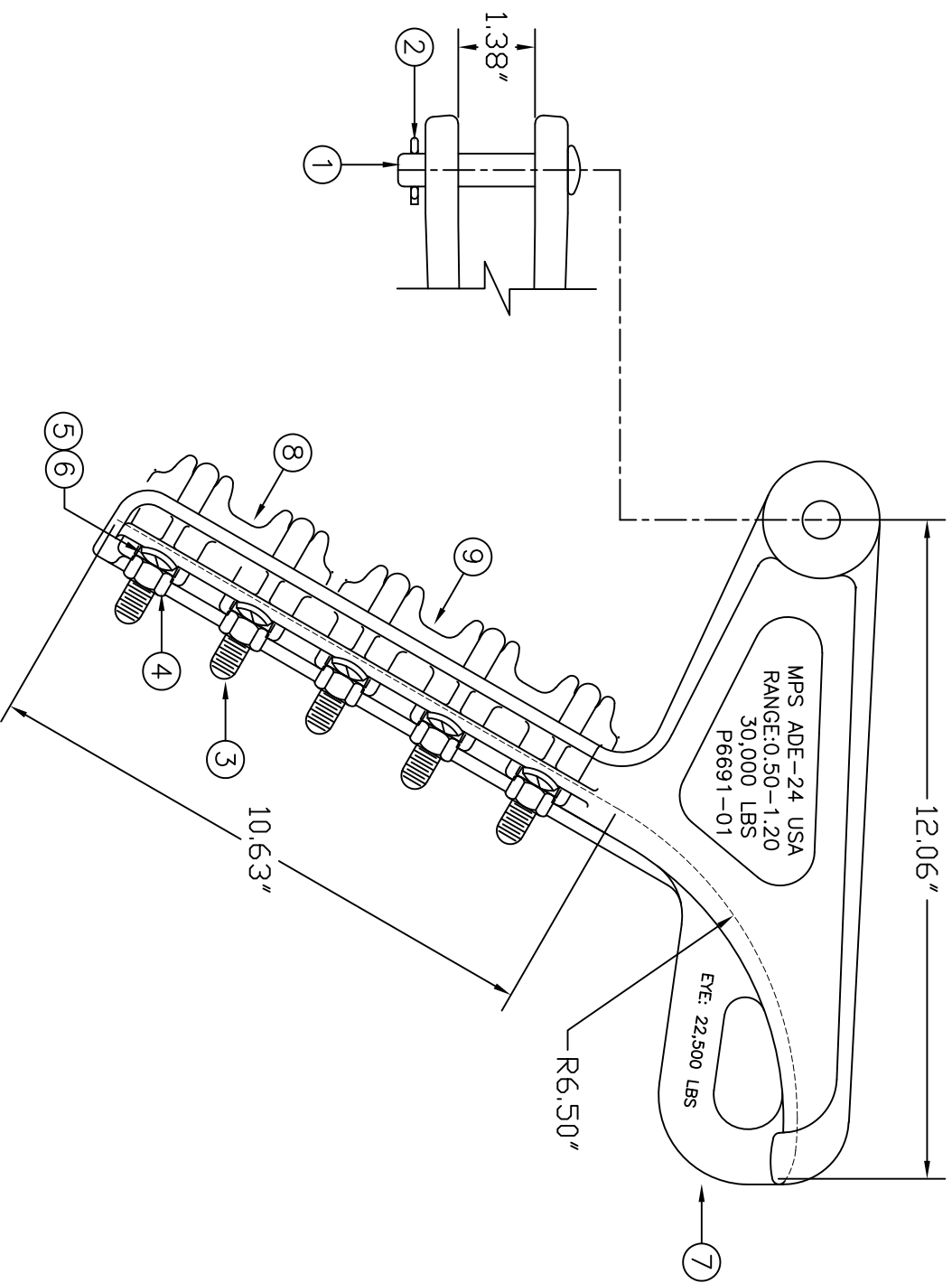
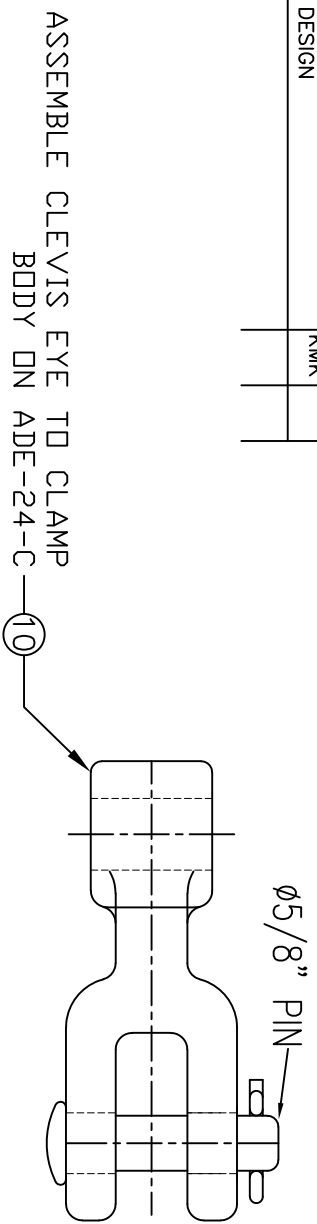


REVISIONS			
NO.	DATE	DESCRIPTION	BY CKD
1	01/28/21	UPDATED DRAWING AND TABLE TO NEW DESIGN	KMK



ITEM NO.	PART NO.	CAT. NO.	DESCRIPTION	QUANTITY			
				A	B	C	D
1	P56059	H-0300-04	5/8" ϕ CLEVIS PIN	1			
2	P56109	H-0360-01	COTTR PN HMP	1			
3	P56018	H-0201-22	1/2" U-BOLT	5			
4	P56138	H-0400-04-W	1/2"-13 HEX NUT FIN	10			
5	P56399	H-0520-04	1/2" FLAT WASHER	10			
6	P56294	H-0500-04	1/2" LOCKWASHER	10			
7	P83467	P-6691-01	ADE-24 BODY	1			
8	P83468	P-6692-01	ADE-24 SHORT KEEPER	1			
9	P83469	P-6692-02	ADE-24 LONG KEEPER	1			
10	F410590	CE-55-9	CLEVIS EYE	1			

ASSEMBLY NUMBER	REF. NO.
ADE-24-NEW-C	A
	B
	C
	D

- NOTES:
1. MATERIAL - BODY & KEEPER: ALUMINUM ALLOY A356-T6
HARDWARE: STEEL, HOT DIP GALVANIZED PER ASTM-A153
COTTER PIN: STAINLESS STEEL
 2. ULTIMATE STRENGTH: 30,000 LBS.
 3. CLAMPING RANGE - 0.500" TO 1.200"



ALUMINUM STRAIN DEAD END CLAMP
ADE-24-C

ENG. REF.

This information is confidential and is the property of Maclean Power Systems. It may not be made public or reproduced except that the Customer may make copies for use solely in installation, maintenance, and operation of products supplied by Maclean Power Systems.

DATE: 01/10/2012	SCALE: NONE	NO.
DWN: CDR	CKD: APR	BC8610-2
BY:	BY:	R / 1
		SH. 1 OF 1