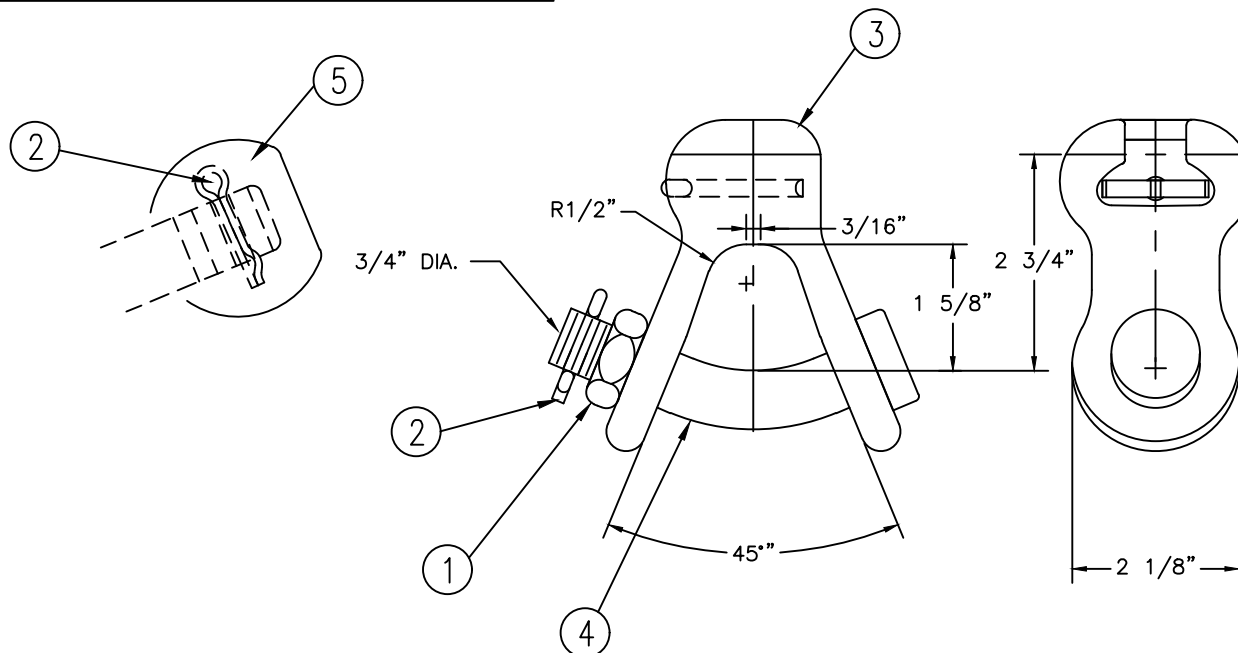


This information is confidential and is the property of Maclean Power Systems. It may not be made public or reproduced except that the Customer may make copies for use solely in installation, maintenance, and operation of products supplied by Maclean Power Systems.

NO. BC8687-1



ITEM NO.	PART NO.	CAT. NO.	DESCRIPTION	QUANTITY	
				A	B
1	P56158	H-0402-06	NUT HX JAM 3/4"	1	-
2	P56110	H-0360-02	COTTER PN HMP 3/4"	1	1
3	P56740M	M-0147-30M	SYC - 56 GALV	1	1
4	P55833	H-0100-01	3/4" BENT BOLT	1	1
5	P58933	P-0350-01	3/4" SPHERE NUT	-	1

NOTES:

1. MATERIAL:

- A. BODY - DUCTILE IRON, HOT DIP GALVANIZED PER ASTM A153
- B. COTTER PIN - AISI 302 STAINLESS STEEL
- C. HARDWARE - STEEL, HOT DIP GALVANIZED

2. ULTIMATE STRENGTH: 30,000 LBS.

3. WEIGHT: 2.670 LBS.

4. ANSI CLASS 52-3 & 52-5 SOCKET.

NO.	DATE	DESCRIPTION	BY	CKD
1	4/04/18	ADDED DIMS FOR RADIUS OF CLEVIS	KMK	

REVISIONS



MACLEAN POWER SYSTEMS
A Maclean-fogg Company

SYC SOCKET Y-CLEVISES
CATALOG NO: SYC-56

DATE: 05/02/13	SCALE:	NO. BC8687-1	R/1	SH.1 OF 1
OWN. LMV	BY: BS	BY: WCL		