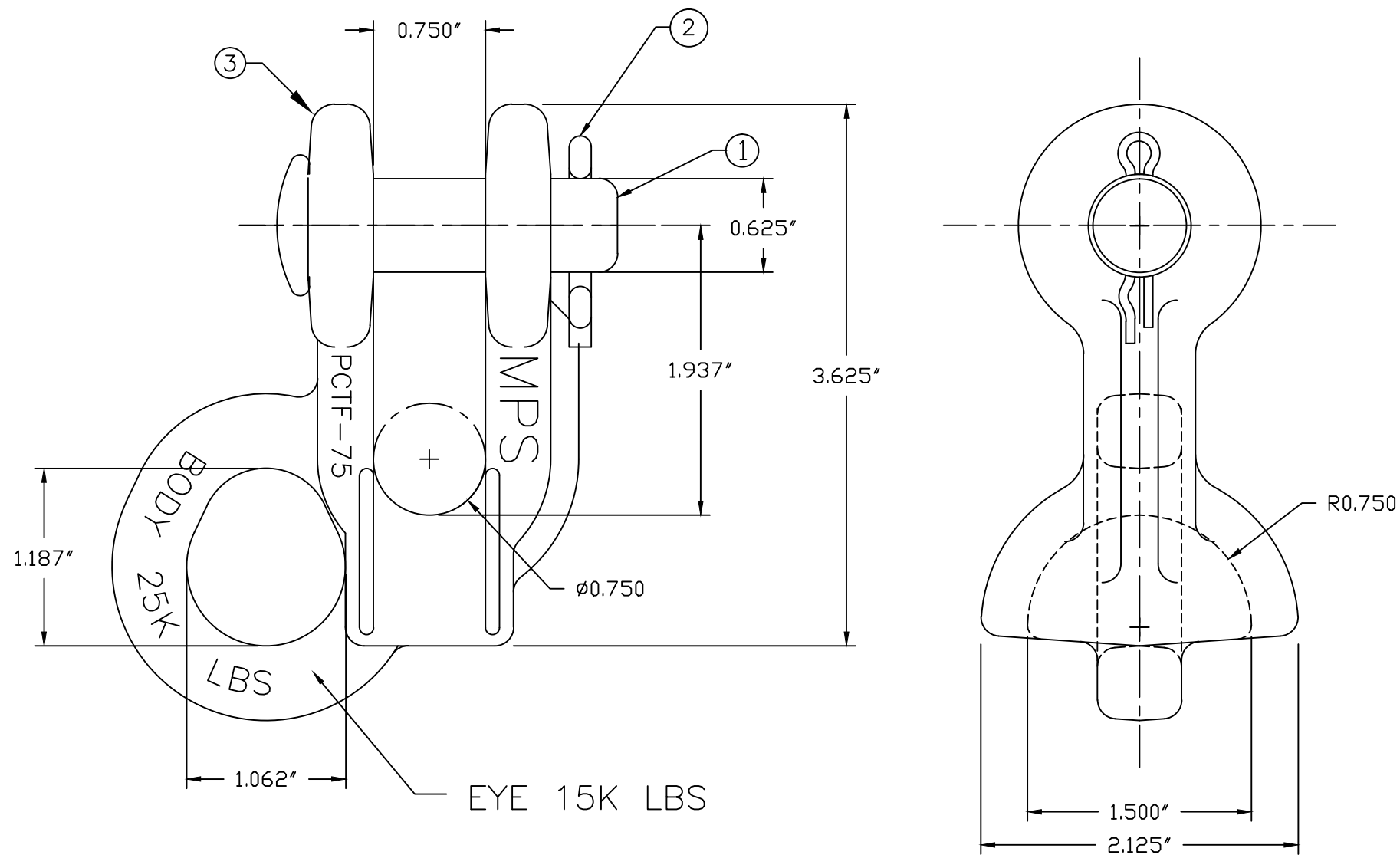


REVISIONS				
NO.	DATE	DESCRIPTION	BY	CKD


ITEM NO.	PART NO.	CAT. NO.	DESCRIPTION	QTY
1	P56057	H-0300-02	5/8"Ø CLEVIS PIN	1
2	P61134	M-111-3	COTTER PIN LONG	1
3	P64689C	>PCTF-75BC	PCTF-75 Body	1



NOTES:

- 1.0 BODY – DUCTILE IRON, HOT DIP GALVANIZED PER ASTM A153.
CLEVIS PIN – STEEL, HOT DIP GALVANIZED.
COTTER KEY – AISI 302 STAINLESS STEEL.
- 2.0 ULTIMATE STRENGTH – 25,000 LBS THIMBLE AND 15,000 LBS PULLING EYE.
- 3.0 ALL DIMENSION IN INCHES.

This information is confidential and is the property of Maclean Power Systems. It may not be made public or reproduced except that the Customer may make copies for use solely in installation, maintenance, and operation of products supplied by Maclean Power Systems.

 MACLEAN POWER SYSTEMS A Maclean-fogg Company	
CLEVIS THIMBLE CATALOG NUMBER: PCTF-75	
DATE: 05/15/13	SCALE: NONE
DWN. BY: LMV	CKD. BY: WCL
APR. BY: WCL	NO. BC-8728
R/0	SH. 1 OF 1

ENG. REF.