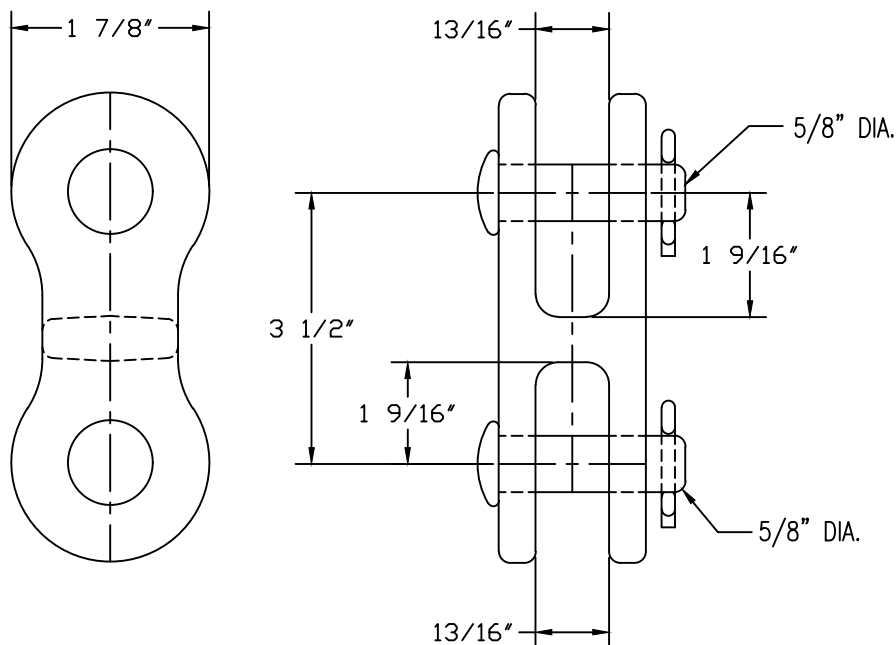


This information is confidential and is the property of Maclean Power Systems. It may not be made public or reproduced except that the Customer may make copies for use solely in installation, maintenance, and operation of products supplied by Maclean Power Systems.

NO. BC8733

ITEM NO.	PART NO.	CAT. NO.	DESCRIPTION	DWG. NO.
1	P57588D	M-6382-01-ASSY	CC-55A ASSY	BC8773C



NOTES: 1. MATERIAL:

- A. BODY – DUCTILE IRON, HOT DIP GALVANIZED PER ASTM A153
- B. COTTER PIN – AISI 302 STAINLESS STEEL
- C. HARDWARE – STEEL, HOT DIP GALVANIZED

2. ULTIMATE STRENGTH: 30,000 LBS.

3. WEIGHT: 2.275 LBS.

NO.	DATE	DESCRIPTION	BY	CKD
1	6/24/21	ADDED BOM	EDE	

REVISIONS



MACLEAN POWER SYSTEMS
A Maclean-fogg Company

90° CLEVIS CLEVIS
CATALOG NO: CC-55A

DATE: 06/17/13	SCALE:	NO. BC8733	R / SH.1
BY: LMV	BY: BS	APR: WCL	1 / OF 1