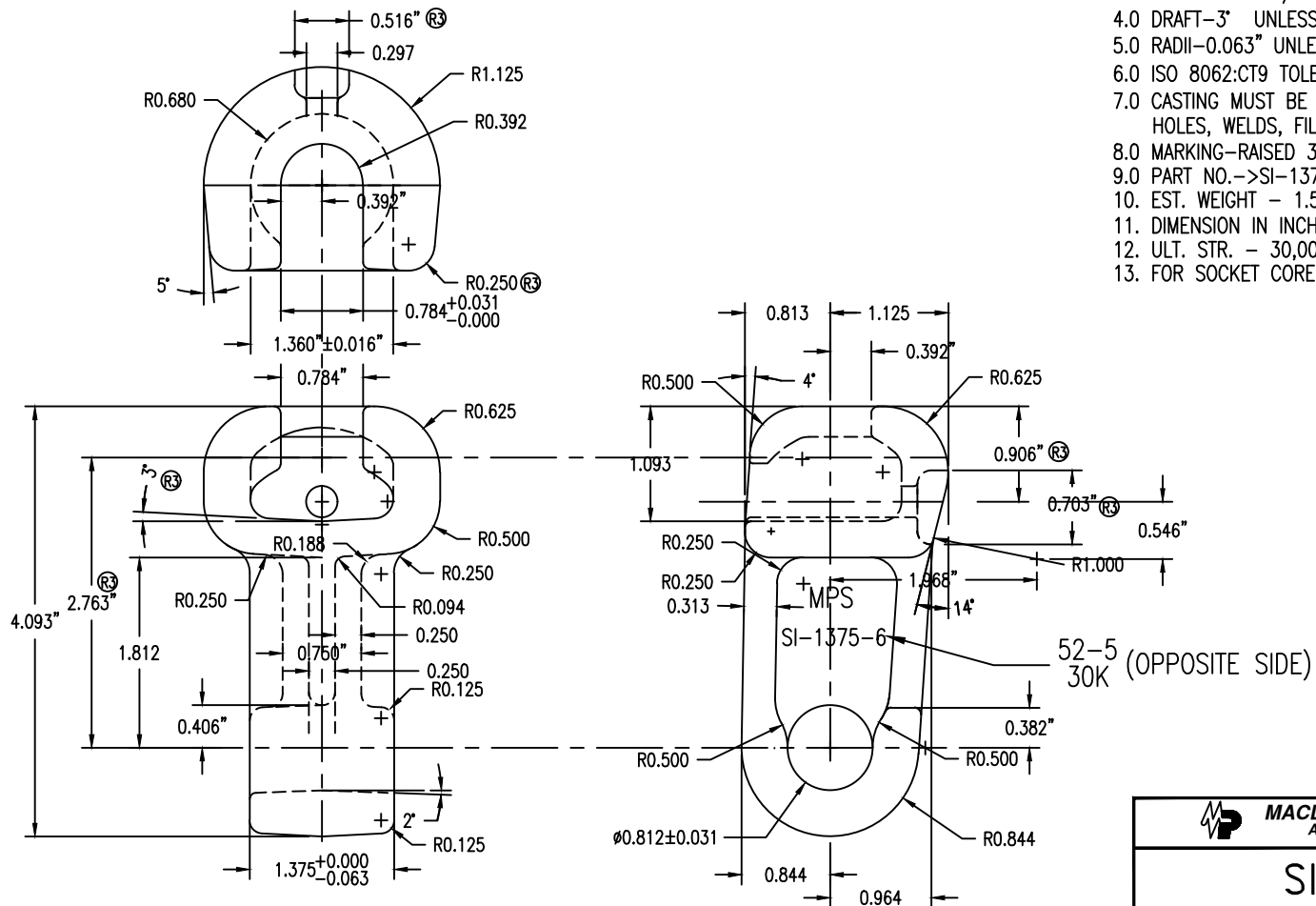


REVISIONS

NO.	DATE	DESCRIPTION	BY	CHKD
1	12/22/11	REDRAWN. REDESIGN TO USE MA15-3 CORE. WAS SE-11-6, DWG. # PB1006.	JMM	
2	06/20/12	CHANGED TITLE BLOCK AND NOTES	JMM	
3	08/02/18	MODIFIED TO MATCH MA15-3 CORE, 2.763 WAS 2.812	WCL	
		.006 WAS .875, .516 WAS .500, .703 WAS .688.	WCL	

NOTES:

- 1.0 MATERIAL-DUCTILE IRON PER ASTM A-536, GRADE 604018, BHN 143-187. MATERIAL CERTIFICATION REQUIRED.
- 2.0 COATING-HOT DIP GALVANIZE PER ASTM A-153.
- 3.0 SHRINK-0.125"/FT. (MASTER PATTERN).
- 4.0 DRAFT-3° UNLESS NOTED.
- 5.0 RADII-0.063" UNLESS NOTED.
- 6.0 ISO 8062:CT9 TOLERANCES UNLESS NOTED.
- 7.0 CASTING MUST BE FREE FROM BURS, SEAMS, HOLES, WELDS, FILLERS, FLASHES AND SHARP EDGES.
- 8.0 MARKING-RAISED 3/16" LETTERS AS MARKED.
- 9.0 PART NO.->SI-1375-6U, (P83009B))
10. EST. WEIGHT - 1.54 LBS.
11. DIMENSION IN INCHES.
12. ULT. STR. - 30,000 LSB.
13. FOR SOCKET CORE DETAIL SEE DWG. MA15-3.



This information is confidential and is the property of Maclean Power Systems. It may not be made public or reproduced except that the Customer may make copies for use solely in installation, maintenance, and operation of products supplied by Maclean Power Systems.

MACLEAN POWER SYSTEMS
A Maclean-togg Company

SI-1375-6
SOCKET EYE DETAIL

DATE: 4/20/82 SCALE: NONE NO. MB-8103-2 R/3 SH. 1 OF 1

ENG. REF.