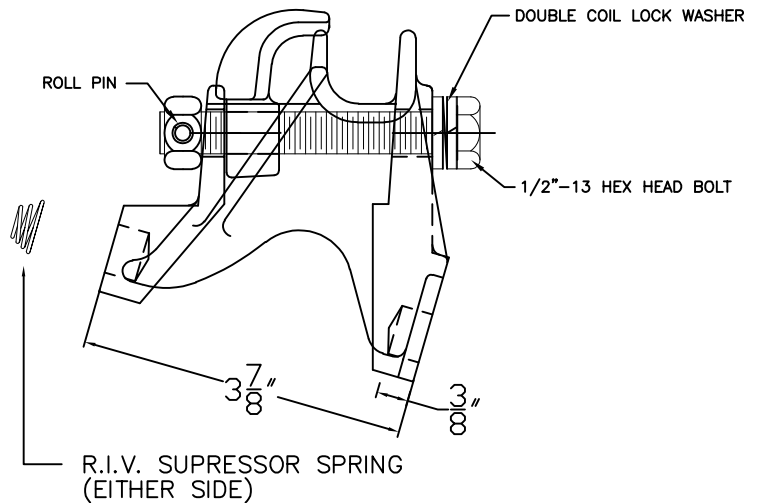
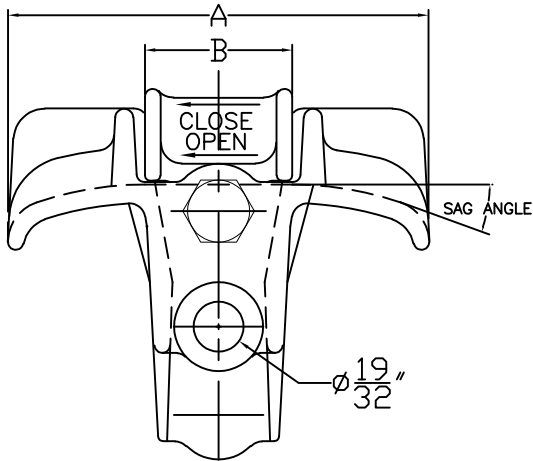


NOTES:
 TANGENT OR ANGLE CLAMP FOR
 LINE ANGLES OF 0° - 45°.
 REVERSIBLE IN TRUNNION FOR
 INTERNAL OR EXTERNAL ANGLES



- NOTES: 1. BODY AND KEEPER - A356-T6 ALUMINUM ALLOY
 BOLT - GRADE 5 STEEL, H.D.G. PER ASTM A153
 NUT - GRADE 2 STEEL, H.D.G. PER ASTM A153
 ROLL PIN & R.I.V. SPRING - STAINLESS STEEL
 2. ULTIMATE STRENGTH - 5,000 LBS.

CAT. NO. CAT. NO.	DIM.		CONDUCTOR RANGE	SAG ANGLE
	A	B		
ULPS2-75	5"	1-3/4"	.25"-.75"	15°
ULPS2-118	5-1/2"	1-7/8"	.68"-1.18"	15°
ULPS2-140	6"	1-7/8"	.88"-1.40"	15°

NO.	DATE	DESCRIPTION	BY	CKD
1	8/28/23	ADDED NOTE FOR CONICAL SPRING RE'D FLAT WASHER; CH'D TO DLW	EDB	

REVISIONS



MACLEAN POWER SYSTEMS
 A Maclean-fogg Company

CLAMP TOP, LINE POST
 SUSPENSION CLAMP
 CAT. NO. : ULPS2 SERIES

DATE: 12/19/85	SCALE:	NO. CEA-1762	R/1	SH.1 OF 1
BY: JSG	BY: VEP	BY: VEP		