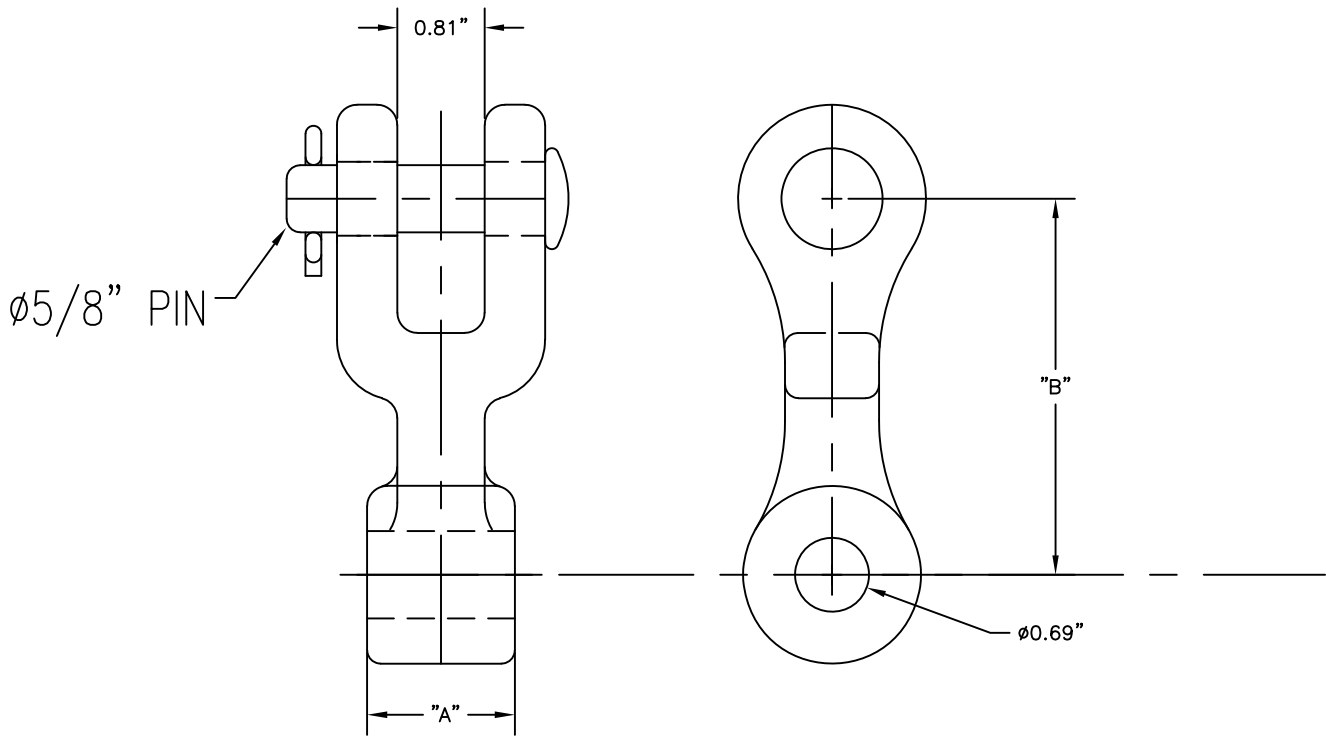


This information is confidential and is the property of Maclean Power Systems. It may not be made public or reproduced except that the Customer may make copies for use solely in installation, maintenance, and operation of products supplied by Maclean Power Systems.

NO. CEA-1879-1



CATALOG NUMBER	"A" DIM (INCHES)	"B" LENGTH (INCHES)	STRENGTH (LBS.)	WEIGHT (LBS.)
CE55-4	0.500	2.625	18,000	1.30
CE55-5	0.625	2.875	25,000	1.35
CE55-9	1.125	2.875	30,000	1.50

NOTES:

1. MATERIAL:

A. BODY - DUCTILE IRON

B. CLEVIS PIN - STEEL, PER ASTM A325 GR. 5

C. COTTER PIN - AISI 302 STAINLESS STEEL

2. FINISH: HOT DIP GALVANIZED PER ASTM A-153.

3. FOR BOLT, NUT, & COTTER ADD SUFFIX "BC" TO CAT. NO.

NO.	DATE	DESCRIPTION	BY	CKD
REVISIONS				

**MACLEAN POWER SYSTEMS**  
A Maclean-fogg Company

CLEVIS EYE  
CATALOG NO. CE55 SERIES

DATE: 5/27/21	SCALE: NONE	NO. CEA-1879-1	R / 0	SH. 1 OF 1
OWN. BY: KMK	DES. BY:	APP. BY:		