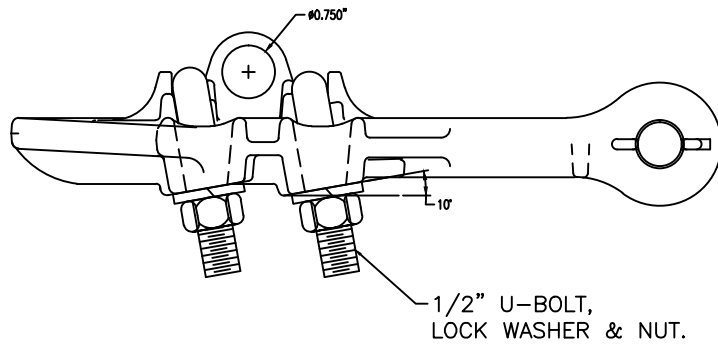
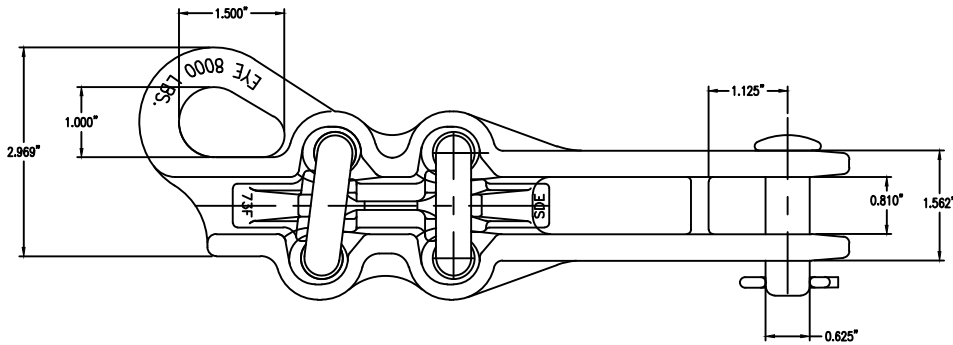



This information is confidential and is the property of Maclean Power Systems. It may not be made public or reproduced except that the Customer may make copies for use solely in installation, maintenance, and operation of products supplied by Maclean Power Systems.



1. MATERIAL – BODY & KEEPER, DUCTILE IRON
HARDWARE, STEEL
COTTER KEY, SS STEEL.
2. COATING – HOT DIP GALVANIZING PER ASTM A-153
3. RATED STRENGTH – 12,000 LBS BODY,
8,000 LBS EYE.
4. TORQUE – 40 FT-LB.
5. RANGE – .25-.73”
6. WEIGHT – 4.10 LBS.
7. ALL DIMENSIONS ARE IN INCHES.

 MacLean Power Systems BIRMINGHAM , ALABAMA		
DRAWN BY: MASSEY	APPROVED BY: VEP CHECKED BY: VEP	SCALE:
STRAIGHT DEADEND CAT.# SDE-73F		
NO. DATE	DESCRIPTION	BY
1 1/4/94	REDRAWN IN CAD	DHL
DATE: 06-14-83		DRAWING NO: CEA-2099
REVISIONS		R/1

1	1/4/94	REDRAWN IN CAD	DHL
NO.	DATE	DESCRIPTION	BY