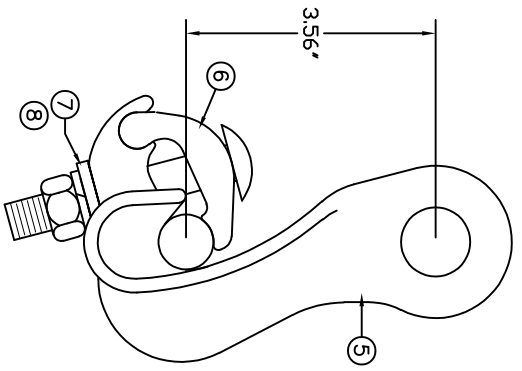
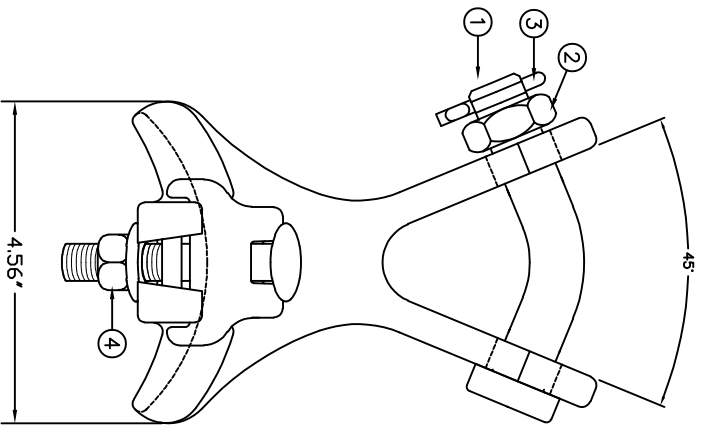


REVISIONS		
NO.	DATE	DESCRIPTION



ITEM NO.	PART NO.	CAT. NO.	DESCRIPTION	QUANTITY			
				A	B	C	D
1	P55833	H-0100-01	3/4"φ BENT BOLT	1			
2	P56158	H-0402-06	3/4" JAM NUT	1			
3	P56110	H-0360-02	COTTER PIN HMP3/4"	1			
4	P56137	H-0400-04	1/2"-1.3 HEX NUT FIN	1			
5	P62302	YAC125B	YAC125B BODY CST	1			
6	P62012P	AC125KP	AC125K KEEPER PEEN	1			
7	P56294	H-0506-04	1/2" WIDE FLATWASHER	1			
8	P56399	H-0520-04	1" LOCK WASHER	1			

ASSEMBLY NUMBER	REF. NO.
YAC125	A
	B
	C
	D

NOTES:  
 1. MATERIAL – BODY & KEEPER: ALUMINUM ALLOY A356-T6

HARDWARE:  
 STEEL, HOT DIP GALVANIZED PER ASTM-A153  
 COTTER PIN:  
 STAINLESS STEEL

2. ULTIMATE STRENGTH: 12,000 LBS.
3. CLAMPING RANGE – 0.50" TO 1.250"
4. RECOMMENDED TORQUE – 40-45 FT.LBS.

**MACLEAN POWER SYSTEMS**  
 A Maclean-fogg Company

ANGLE SUSPENSION CLAMP  
 YAC125

This information is confidential and is the property of Maclean Power Systems. It may not be made public or reproduced except that the Customer may make copies for use solely in installation, maintenance, and operation of products supplied by Maclean Power Systems.

ENG. REF.

DATE 09/28/1996	SCALE NONE	NO.	R / 0
DRN. CDR BR.	DR.	CEA2236	SH. 1 / -1