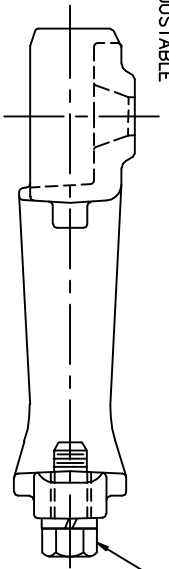


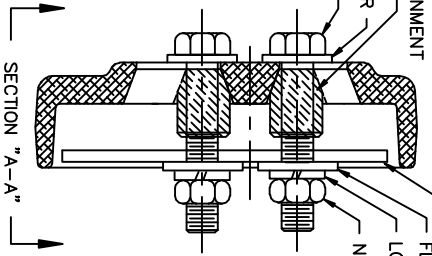
TAPERED WEDGE SEAT ON CONTAINMENT STUD FOR RIGID POSITIONING OF ADJUSTABLE STUD.



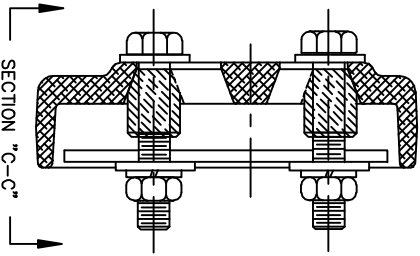
5/8" DOG POINT BOLT WITH SPLIT LOCK WASHER

SECTION "B - B"

CONTAINMENT STUD  
FLAT WASHER  
1/2 BOLT  
NUT  
LOCK WASHER  
FLAT WASHER



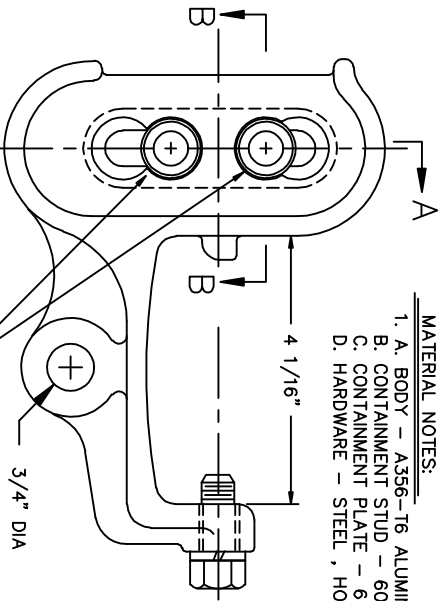
SECTION "A-A"



SECTION "C-C"

CONTAINMENT STUD POSITION FOR FIG. 2 TYPE INSULATOR FITTING

- MATERIAL NOTES:
- 1. A. BODY - A356-T6 ALUMINUM ALLOY
  - B. CONTAINMENT STUD - 6061-T6 ALUMINUM ALLOY
  - C. CONTAINMENT PLATE - 6061-T6 ALUMINUM ALLOY
  - D. HARDWARE - STEEL, HOT DIP GALVANIZED



ADJUSTABLE CONTAINMENT STUD POSITION. CONTAINMENT STUD WILL ADJUST TO FIT INSULATOR BEING USED.  
NOTE: TRUNNION ADAPTOR FITS O.B., LAPP, & RELIABLE 2-1/2" DIA. POLYMER TYPE FIG.1 & 2 POST INSULATORS.

PATENT PENDING

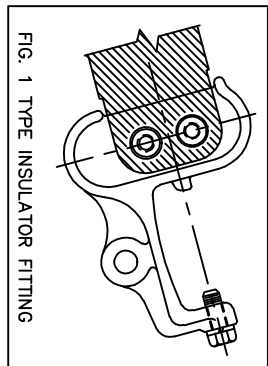


FIG. 1 TYPE INSULATOR FITTING

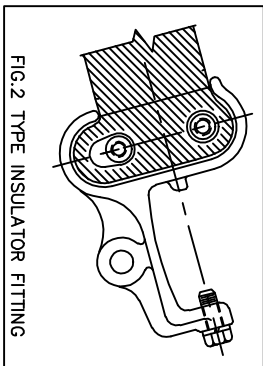


FIG. 2 TYPE INSULATOR FITTING

NO.	DATE	DESCRIPTION	BY
2	3-28-90	REVISED FOR FINAL PRODUCTION	JSG
1	10-13-89	ADDED MATERIAL NOTES.	A.H.
REVISIONS			
CONTINENTAL ELECTRIC CO.			
BIRMINGHAM, ALABAMA			
DRAWN BY: A.HARRIS		APPROVED BY: _____	
CHECKED BY: _____		SCALE: _____	
POLYMER INS. TRUNNION ADAPTOR			
2 1/2" DIA. ONLY PITA-250			
DATE:	10-11-89	DRAWING NO.:	CEB-2617
			R/2