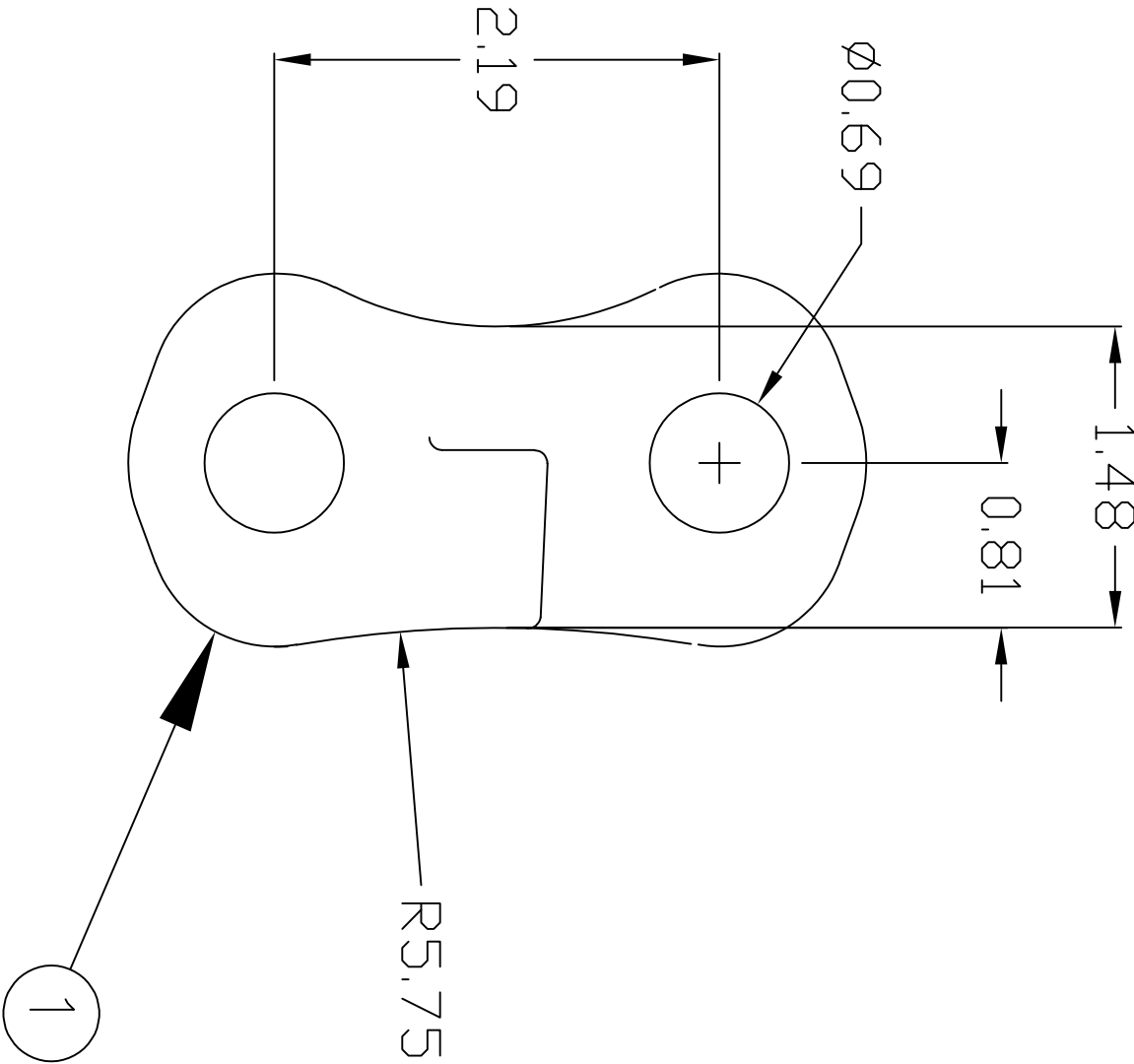
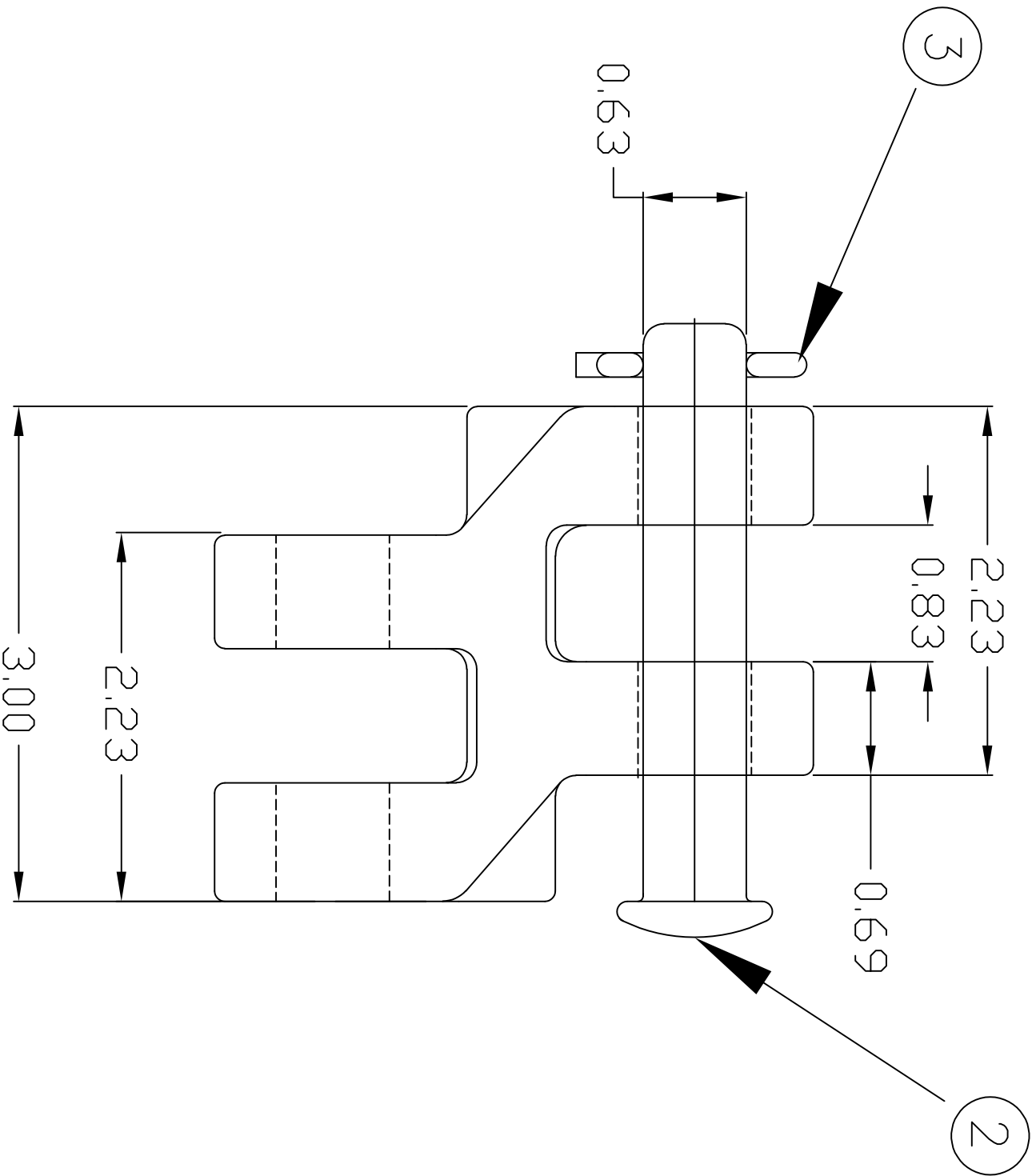



REVISIONS			
NO.	DATE	DESCRIPTION	BY CKD



BILL OF MATERIAL

ITEM	CATALOG NUMBER	DESCRIPTION	MATERIAL	QTY.
①	>P/2-30B	P/2 30K BODY	D.I.	1
②	H-0300-06	5/8" CLEVIS PIN	ST'L	1
③	H-0360-01	COTTER KEY FOR 5/8" PIN	S.S.	1

This information is confidential and is the property of Maclean Power Systems. It may not be made public or reproduced except that the Customer may make copies for use solely in installation, maintenance, and operation of products supplied by Maclean Power Systems.



MACLEAN POWER SYSTEMS

A Maclean-togg Company

P/2-30

30K POLEBAND HALF LINK ASSEMBLIES

DATE: 08/24/15 | SCALE: NONE | NO. CEB-2753-1

DMN, WCL

WCL

R / 1

SH. 1 OF 1