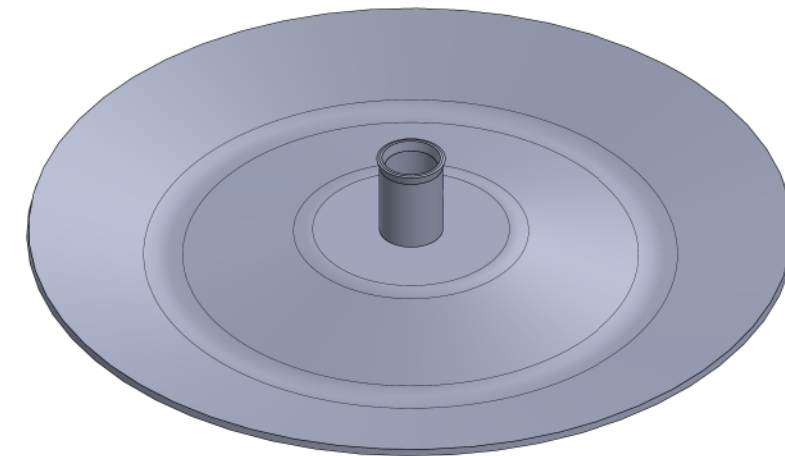
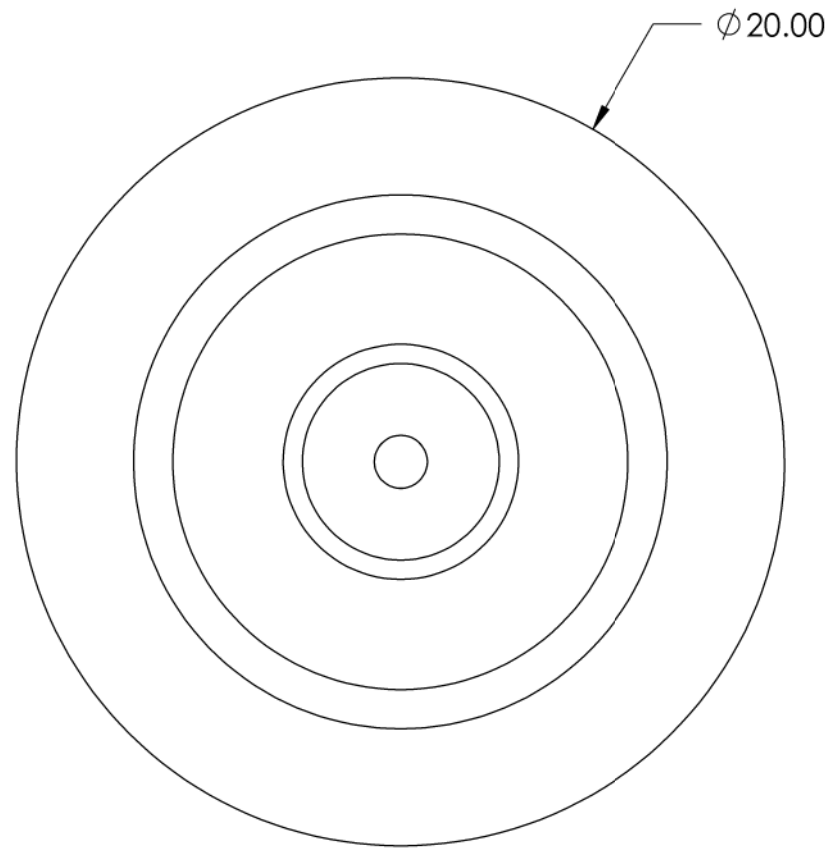
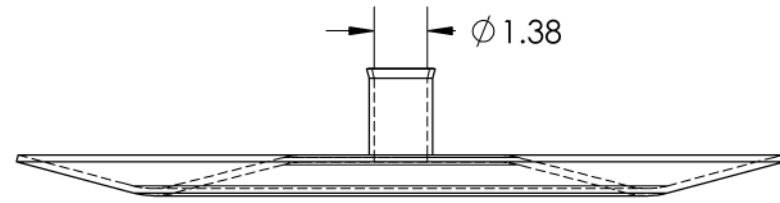


REV	REVISED BY:	REVISION DATE	ECO #
A	NP	05/29/26	

NOTES:

1. MATERIAL: STEEL, 36 KSI YIELD
2. FINISH: ASPHALT PAINT, BLACK
3. THICKNESS: 0.187"
4. DIMENSION: INCHES
5. ULTIMATE TENSILE RATING: 36,000 LBS



This drawing contains confidential information that is the property of MacLean Power, L.L.C. ("MacLean"). Use of MacLean's confidential information without MacLean's express written consent is strictly prohibited and may expose you to legal liability. If you believe that you received this material in error, please destroy it or return it to "MacLean Power, L.L.C., 11411 Addison Street, Franklin Park, Illinois 60131, USA."



WWW.MACLEANPOWER.COM

PART NUMBER: <b>DA201187</b>		DO NOT SCALE DRAWING	
SHEET NAME: <b>Sheet1</b>		1 OF 1	
DRAWING DESCRIPTION: <b>20" DISK ANCHOR FOR 1" ANCHOR RODS</b>		DESIGN DATE: 5/29/2026	
DRAWN BY: NP		ENGINEER: NP	
APPROVED: XXX		REVISION: <b>A</b>	
DRAWING SCALE: 1:5			