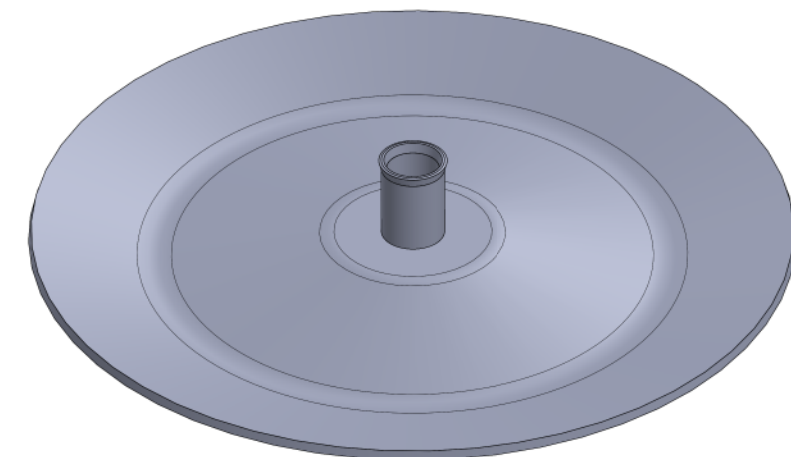
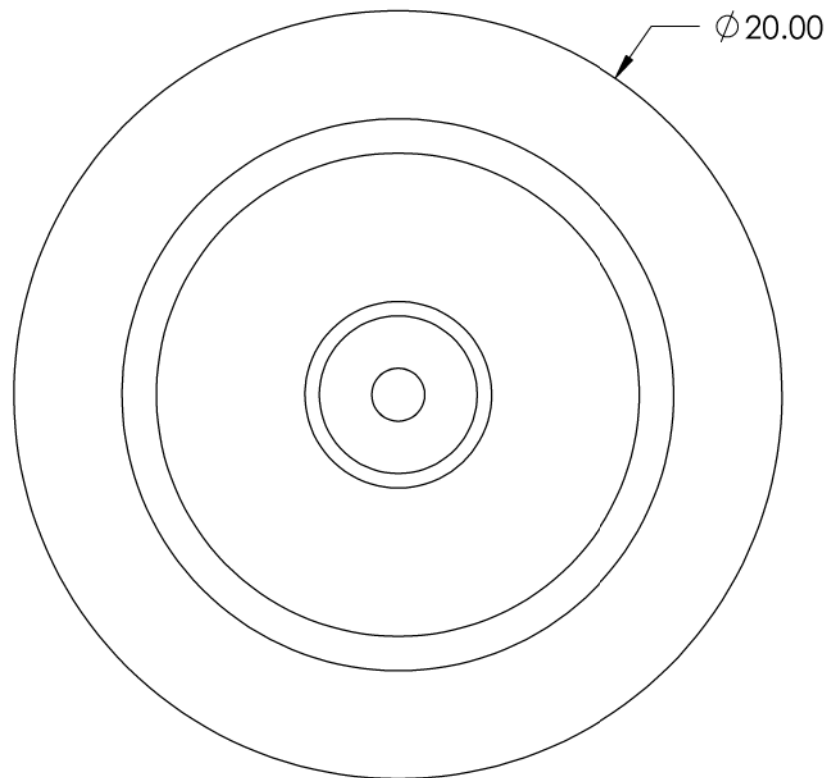
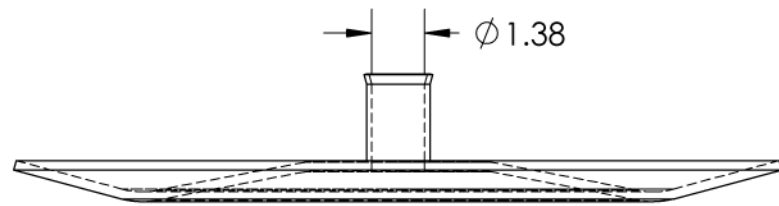


REV	REVISED BY:	REVISION DATE	ECO #
A	NP	05/29/26	

NOTES:

1. MATERIAL: STEEL, 36 KSI YIELD
2. FINISH: ASPHALT PAINT, BLACK
3. THICKNESS: 0.25"
4. DIMENSION: INCHES
5. ULTIMATE TENSILE RATING: 36,000 LBS



This drawing contains confidential information that is the property of MacLean Power, L.L.C. ("MacLean"). Use of MacLean's confidential information without MacLean's express written consent is strictly prohibited and may expose you to legal liability. If you believe that you received this material in error, please destroy it or return it to "MacLean Power, L.L.C., 11411 Addison Street, Franklin Park, Illinois 60131, USA."

UNLESS OTHERWISE SPECIFIED DIMENSIONS ARE IN:	
<b>INCHES</b>	
TOLERANCES ARE:	
.XX	+/- .06"
.XXX	+/- .030"
X/XX	+/- 1/32"
ANGLES	+/- 1°

  
**MacLean**  
 POWER SYSTEMS  
[WWW.MACLEANPOWER.COM](http://WWW.MACLEANPOWER.COM)

PART NUMBER: <b>DA201250</b>		DO NOT SCALE DRAWING	
SHEET NAME: <b>Sheet1</b>		CAD GENERATED DRAWING DO NOT MANUALLY UPDATE	
DRAWING DESCRIPTION: <b>20" DISK ANCHOR FOR 1" ANCHOR RODS</b>		DESIGN DATE: <b>5/29/2026</b>	
DRAWING SCALE: <b>1:5</b>		DRAWN BY:	NP
		ENGINEER:	NP
		APPROVED:	XXX
		REVISION:	<b>A</b>