

Date: 07/19/2023

Page: 1 of 1

MacLean Power Systems reengineered and launched an updated product line of 15-46kV distribution line posts in 2021. This product launch updated the Generation 1 line post, which was designed and launched by Sediver in 1982. These products have been produced concurrently with the Gen 1 insulator product line since that time. When comparing to the Gen 1 product offerings, the Gen 2 line offers an improvement in performance through both design and materials. Gen 2 line posts boasts design features that were previously only in use on MPS transmission insulators, including the PST sealing system, modular construction, and large diameter sheds. To best serve our customer base with the highest quality products and the shortest lead times possible, the Gen 1 15-46kV post insulator line will be discontinued and replaced with the Gen 2. All Gen 2 products will offer a functional equivalent to the Gen 1, per the table in Appendix 1. Products suffixes included in obsolescence: NPVN10, NPKN10, NPKG10, NPVG10 and any subsequent derivatives. Visual depictions of the Gen 1 and Gen 2 variants can be observed below in Figure 1.



Figure 1: Gen 1 Insulator (left) Gen 2 Insulator (right)

MPS will continue to accept orders on the Gen 1 design until 10/15/23, after that point all new purchase orders will be transitioned to the outlined functional equivalent Gen 2 version. Performance characteristics and sales drawings of all iterations can be obtained on the MacLean Power Systems website for review. Please contact your MPS representative with any questions or for help with specifications for this product.

As of this notice the Generation 2 product line is equipped with our transmission insulator style *PST* end fitting sealing system for all stud base variants. All gain base variants are equipped with our improved iteration of the PST sealing system. This improved sealing system has increased performance over the PST, through an added radial compression seal and fully galvanized interface on iron interfaces. This change will be implemented across the entire Gen 2 product line as a rolling design improvement. Customers should expect to begin seeing insulators with the latest sealing system starting Q4 2023 as the new designs are implemented into production. Although most improvements in the sealing system are internal to the end fitting geometry, the key noticeable difference from a visual perspective is the elimination of topical RTV. This can be viewed below in Figure 2. All product changes included in this PIB have been thoroughly tested and comply with ANSI C29.18 and CSA C411.6.

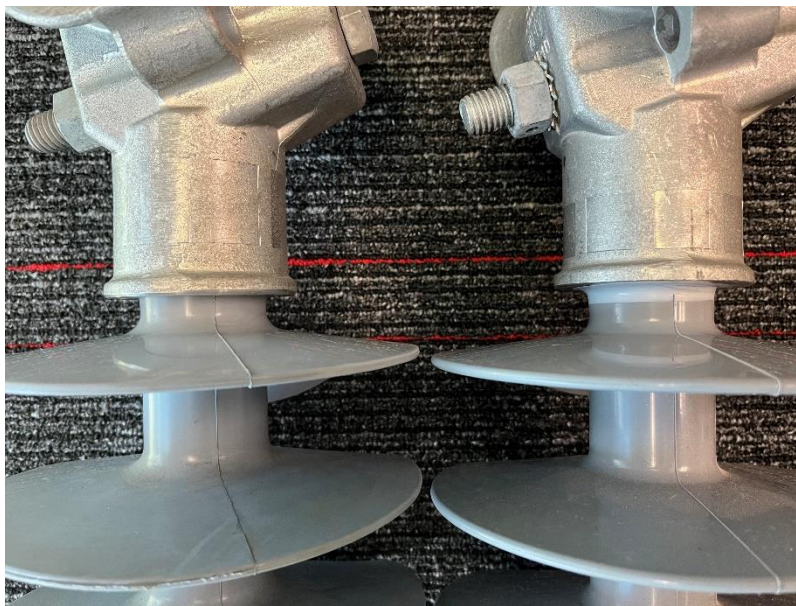





Figure 2: Revised Seal (left), PST Seal (right)

Please reach out to your local MacLean Power Systems sales agent for additional information or specific questions.

Thanks,
Tyler

Tyler Krohn | Director of Product Management
7801 Park Place Rd York, SC 29745
www.maclepower.com

Appendix- Cross Reference Table

MPS Generation 2 Distribution Posts													MPS Sediver Distribution Posts					
Line Voltage (kV)	Stud Base Catalog Number	ANSI Class	Assembly Weight lb/(kg)	Rubber Length in/(mm)	Section Length in/(mm)	Dry Arc in/(mm)	Leakage in/(mm)	STL lbs/kN	SCL lbs/(kN)	MDCCL lbs/kN	Units per Carton	Units per Pallet	Catalog Number	Weight (lb)	Dry Arc (in)	Leakage (in)	Section Length (in)	
 F-Neck	15	H04070004MXXS002	51-1F	6.9 [3.1]	4.0 [101]	11.7 [297]	6.2 [158]	12.2 [310]	5000 [22.2]	2800 [12.5]	1350 [6.0]	3	90	V74070008MXXG007	6.2/12	7.2/8.2	11.3/19.9	11/14
	25	H04070006MXXS003	51-2F	7.6 [3.4]	5.9 [151]	13.7 [347]	8.2 [209]	18.3 [465]	5000 [22.2]	2800 [12.5]	1350 [6.0]	3	90	V74070010MXXG009	7.1/14.6	11.2/11	18.8/24.9	15/14.6
	35	H04070008MXXS004	51-3F	8.2 [3.7]	7.9 [201]	15.6 [397]	10.2 [259]	24.4 [620]	5000 [22.2]	2800 [12.5]	1350 [6.0]	3	90	V74070012MXXG011	7.7/15.4	13.2/13	22.4/30.7	17/16.6
	46	H04070010MXXS005	51-4F	8.9 [4.0]	9.9 [252]	17.6 [447]	12.7 [322]	31.4 [798]	5000 [22.2]	2800 [12.5]	1350 [6.0]	3	90					
	15	H040U0004MXXS002	ALL	7.9 [3.6]	4.0 [101]	12.6 [321]	6.2 [158]	12.2 [310]	5000 [22.2]	2800 [12.5]	1350 [6.0]	3	90					
	25	H040U0006MXXS003	ALL	8.6 [3.9]	5.9 [151]	14.6 [371]	8.2 [209]	18.3 [465]	5000 [22.2]	2800 [12.5]	1350 [6.0]	3	90					
 Universal	35	H040U0008MXXS004	ALL	9.4 [4.3]	7.9 [201]	16.6 [421]	10.2 [259]	24.4 [620]	5000 [22.2]	2800 [12.5]	1350 [6.0]	3	90					
	46	H040U0010MXXS005	ALL	10.0 [4.5]	9.9 [252]	18.5 [471]	12.7 [322]	31.4 [798]	5000 [22.2]	2800 [12.5]	1350 [6.0]	3	90					
	15	H04060004MXXS002	51-11	6.4 [2.9]	4.0 [101]	12.7 [323]	6.2 [158]	12.2 [310]	5000 [22.2]	2800 [12.5]	1350 [6.0]	3	90	NPVN10XB003S0	6.2	7.2	11.3	10.9
	25	H04060006MXXS003	51-12	7.1 [3.2]	5.9 [151]	14.7 [373]	8.2 [209]	18.3 [465]	5000 [22.2]	2800 [12.5]	1350 [6.0]	3	90	NPVN10XB005S0	7.1	11.2	18.8	14.9
	35	H04060008MXXS004	51-13	7.8 [3.5]	7.9 [201]	16.7 [423]	10.2 [259]	24.4 [620]	5000 [22.2]	2800 [12.5]	1350 [6.0]	3	90	NPVN10XB006S0	7.6	13.2	22.4	16.9
	46	H04060010MXXS005	51-14	8.4 [3.8]	9.9 [252]	18.6 [473]	12.7 [322]	31.4 [798]	5000 [22.2]	2800 [12.5]	1350 [6.0]	3	90	NPKN10XB003S0	6.2	7.2	11.3	10.9
 Horizontal Trunion	15	H04020004MXXS002	51-21	6.3 [2.8]	4.0 [101]	12.0 [306]	6.2 [158]	12.2 [310]	5000 [22.2]	2800 [12.5]	1350 [6.0]	3	90	NPKN10XB005S0	7.1	11.2	18.8	14.9
	25	H04020006MXXS003	51-22	7.0 [3.2]	5.9 [151]	14.0 [356]	8.2 [209]	18.3 [465]	5000 [22.2]	2800 [12.5]	1350 [6.0]	3	90	NPKN10XB006S0	7.6	13.2	22.4	16.9
	35	H04020008MXXS004	51-23	7.6 [3.4]	7.9 [201]	16.0 [406]	10.2 [259]	24.4 [620]	5000 [22.2]	2800 [12.5]	1350 [6.0]	3	90	NPKN10XB007S0	7.1	11.2	18.8	14.9
	46	H04020010MXXS005	51-24	8.3 [3.8]	9.9 [252]	18.0 [456]	12.7 [322]	31.4 [798]	5000 [22.2]	2800 [12.5]	1350 [6.0]	3	90	NPKN10XB008S0	7.6	13.2	22.4	16.9