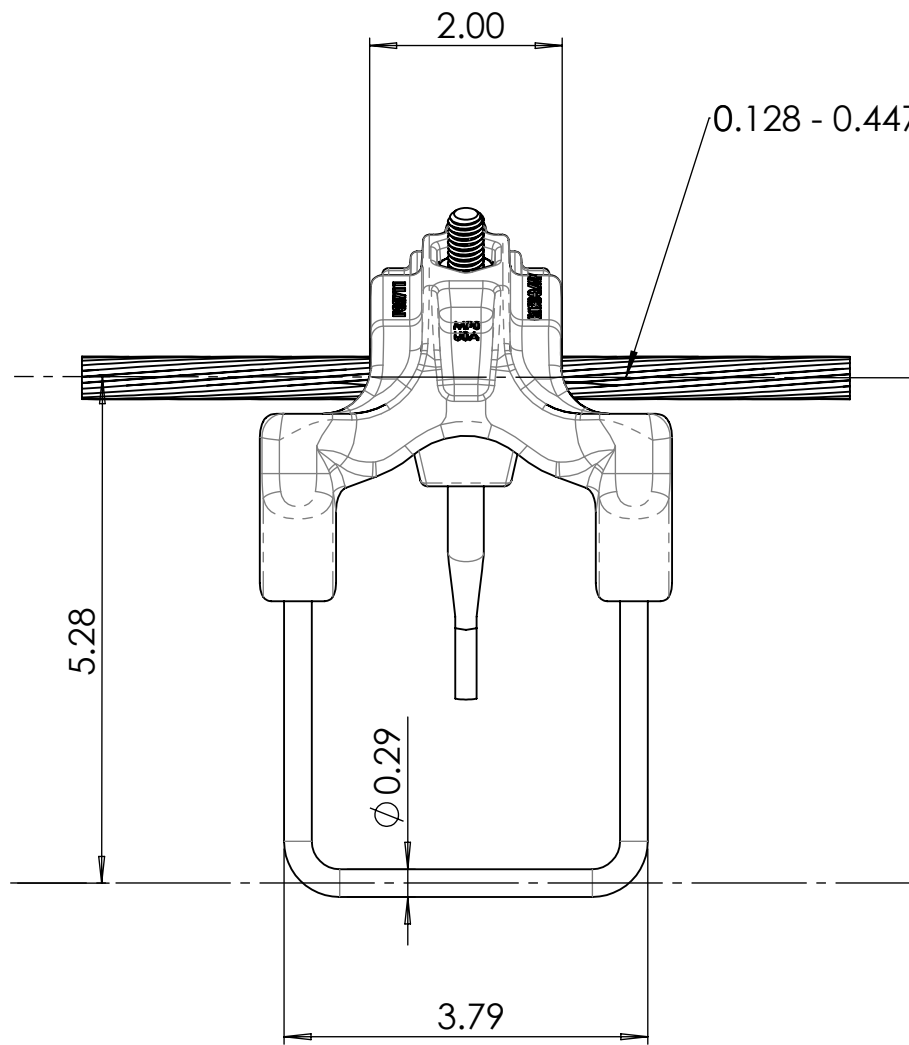
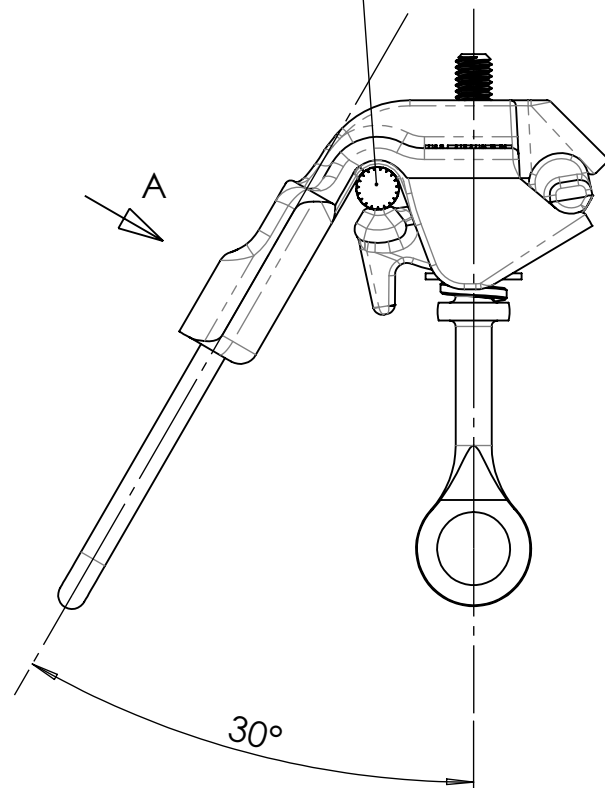


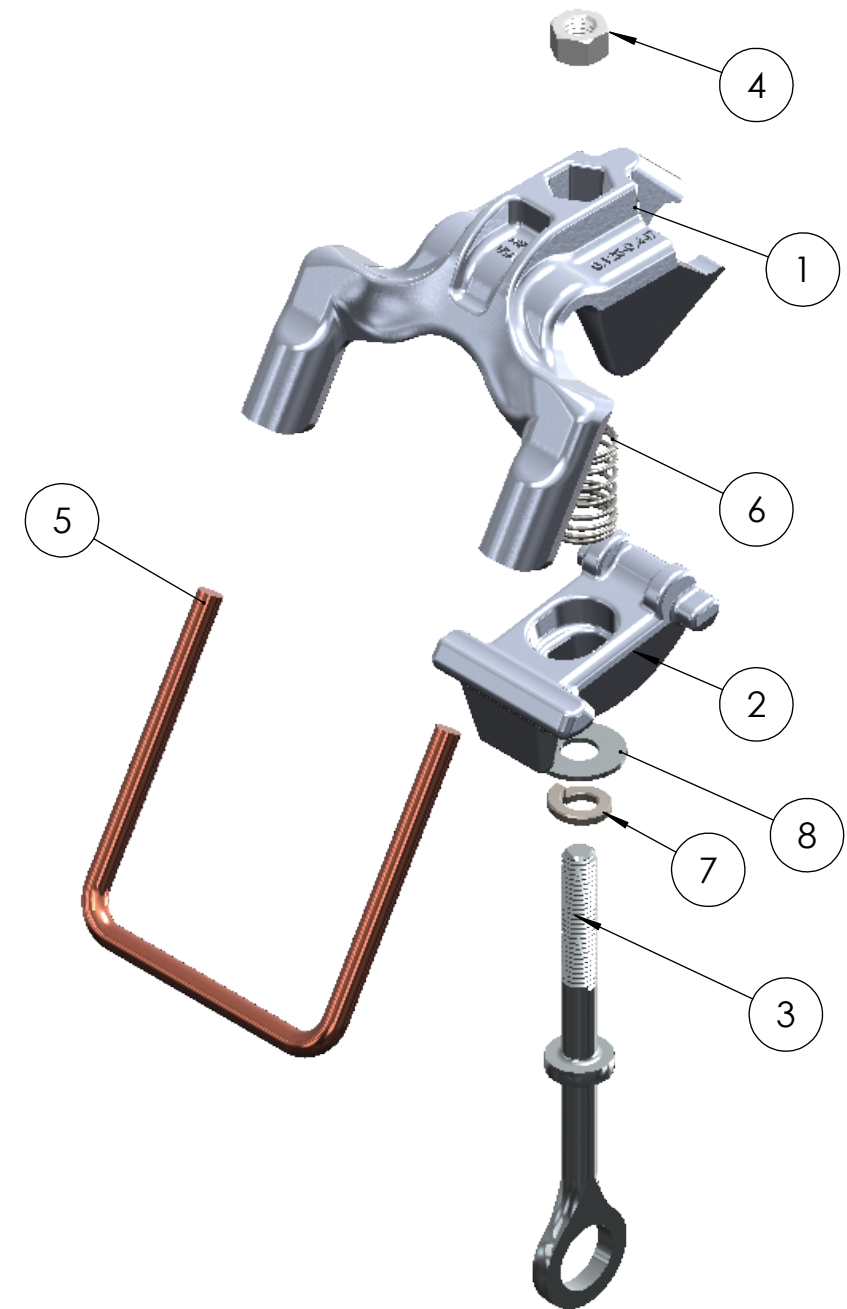
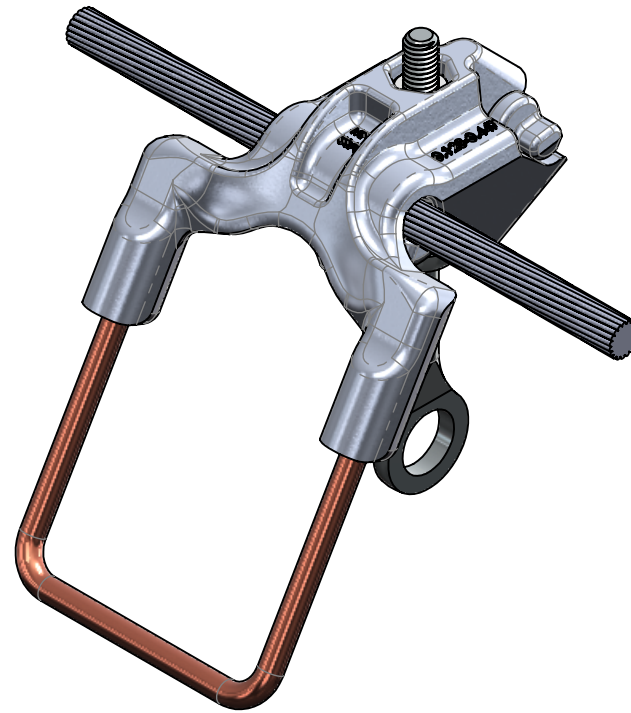
ITEM NO.	PART NUMBER	DESCRIPTION	QTY.
1	P83711	HLAS BODY 0.128 - 0.447	1
2	P83712	HLAS KEEPER 0.128 - 0.447	1
3	P83713	3/8" STAINLESS EYESCREW	1
4	P56180	NUT; HEX; 3/8; SS	1
5	P56270	STIRRUP; COPR; 3.5 X 3.75 X 1	1
6	P56237	SPRING; COMP; 3/4 X 1.12	1
8	P56415	WASHER; LOCK; 3/8; SS	1
9	P83715	WASHER; FLAT; 3/8; SS	1



VIEW A
30.00°
SCALE 1 : 2



- MATERIAL NOTES:
 1. BODY AND KEEPER: A356-T6
 2. STIRRUP: COPPER
 3. HARDWARE: STAINLESS STEEL



PROJECT NAME	PART NUMBER	F343314	MACLEAN POWER SYSTEMS	
ECO NUMBER	MATERIAL	A356-T6	DESCRIPTION	
STRENGTH RATING N/A	FINISH		DISTRIBUTION HARDWARE	
	CABLE RANGE	0.128 - 0.447 IN	HLAS ASSEMBLY 0.128 - 0.447	
REASON FOR CHANGE	WEIGHT	1.15 LBS	HLAS-447E	
	NAME	DATE	SIZE	DWG. NO.
	DRAWN BY	JDE	11/21/25	REV
TOOLING	ENGINEERING		B	EA-343314
	TOLERANCES		SCALE: 1:5	OLD DRAWING #
	XX +/-0.06	X/XX +/-1/32	SHEET 1 OF 1	
	.XXX +/-0.031	ANGLES +/-1°		
Original Drawn By	Original Drawn Date	<small>This drawing contains confidential information that is the property of Maclean Power, L.L.C. (Maclean®). Use of Maclean's confidential information without Maclean's express written consent is strictly prohibited and may expose you to legal liability. If you believe that you received this material in error, please destroy it or return it to Maclean Power, L.L.C.</small>		