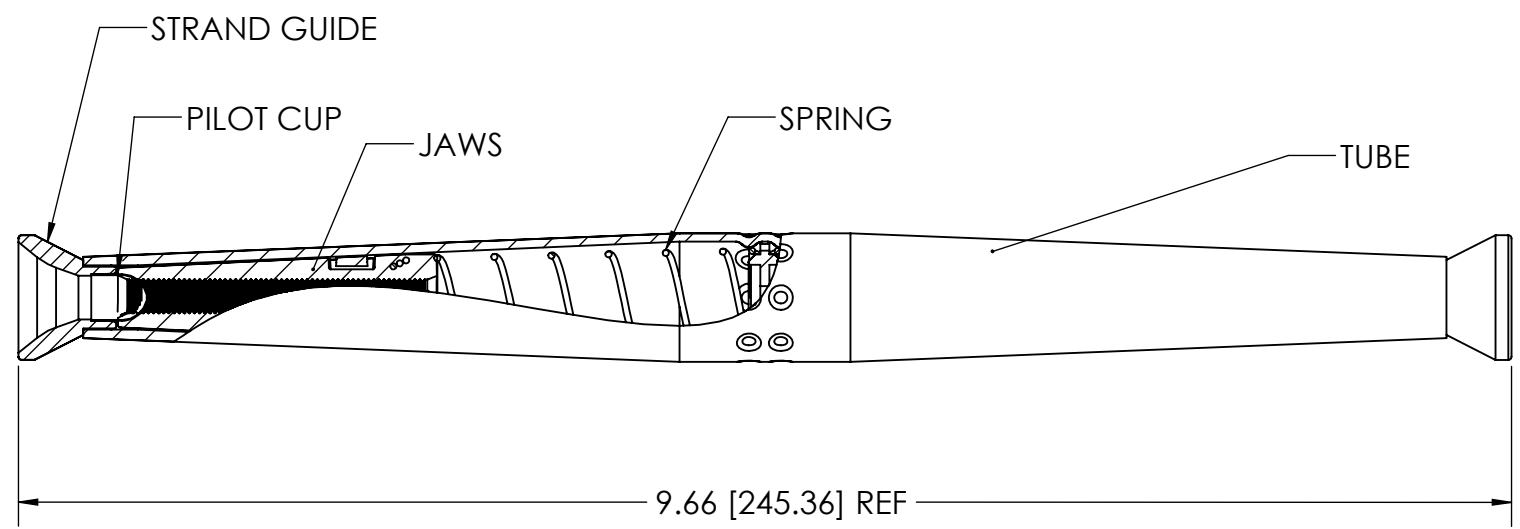
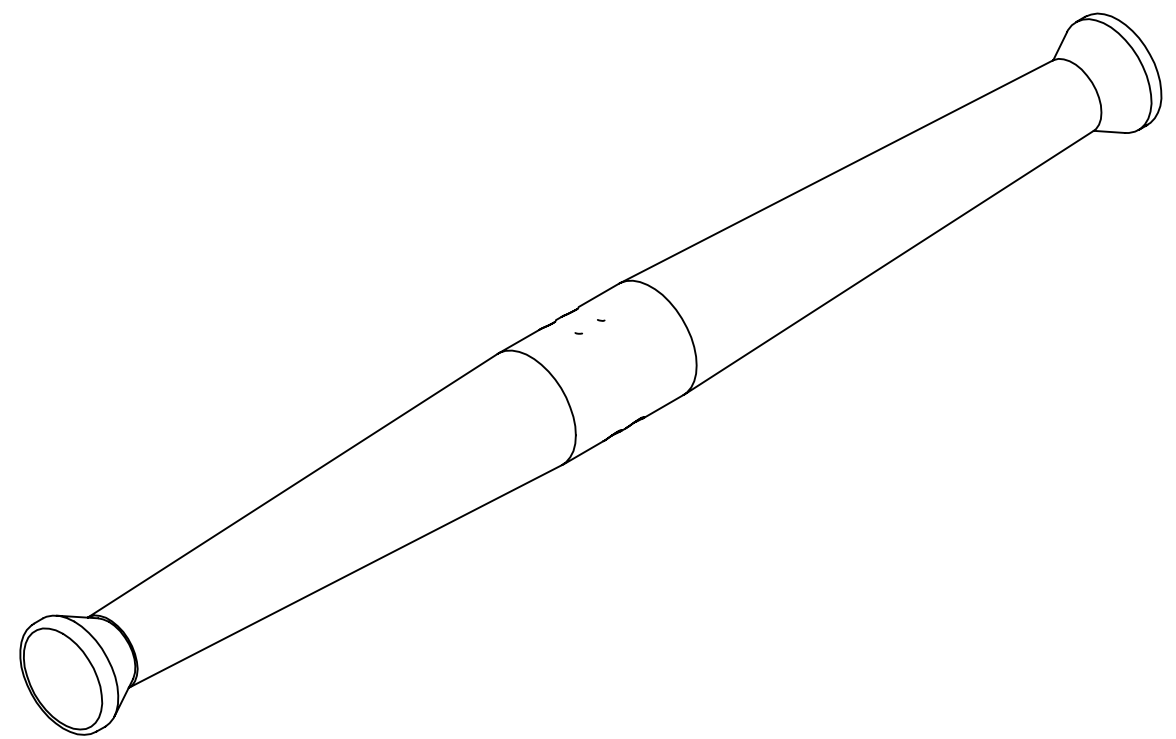
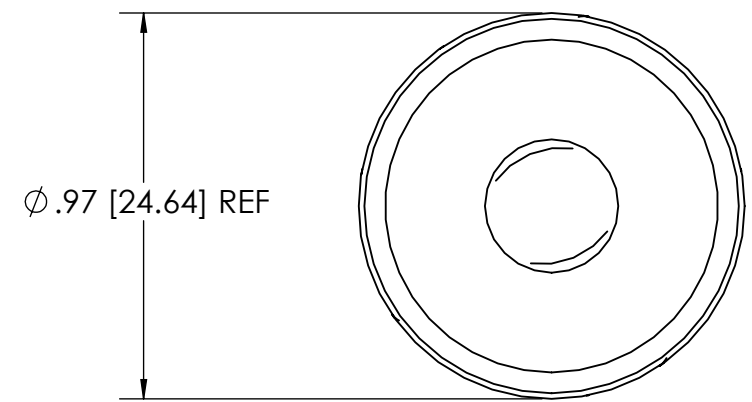


PAPER SIZE		DRAWING NUMBER	
B		GD-7651	
REV	REVISED BY	REVISION DATE	ECO #
A	RHJ	03-20-14	11223
B	ZHB	06-16-21	D10235



ITEM #	DESCRIPTION	MATERIAL	QUANTITY
1	TUBE	ALUMINUM ALLOY	1
2	JAWS	DIE CAST ALUMINUM ALLOY	4
3	SPRING	STAINLESS STEEL	2
4	STRAND GUIDE	PLASTIC (ORANGE)	2
5	PILOT CUP	ALUMINUM	2



WIRE RANGE	
ACSR ASTM-B232	#4
AAAC ASTM-B399	#4
AAC ASTM-B231	#4
CONDUCTOR DIAMETER RANGE	.229 - .265

CATALOG #	7651
-----------	------

- NOTES**
1. Connector is rated to hold a minimum of 95% of the RBS of the strand used.
 2. Dimensions are in inches with millimetres noted in brackets.
 3. All dimensions are reference.
 4. Standard pack is 100.
 5. Current Class A (Heavy Duty) and Tension Class 1 (Full Tension) per ANSI C119.4.

This drawing contains confidential information that is the property of MacLean Power, L.L.C. ("MacLean"). Use of MacLean's confidential information without MacLean's express written consent is strictly prohibited and may expose you to legal liability. If you believe that you received this material in error, please destroy it or return it to "MacLean Power, L.L.C., 11411 Addison Street, Franklin Park, Illinois 60131, USA."

UNLESS OTHERWISE SPECIFIED DIMENSIONS ARE IN:	
INCHES	
TOLERANCES ARE:	
.X	+/- 0.1
.XX	+/- 0.03
.XXX	+/- .015
ANGLES	+/- 1.0°

DRAWING NUMBER: GD-7651		DO NOT SCALE DRAWING	
SHEET NAME: 7651		1 OF 1	
DRAWING DESCRIPTION: 7651 AUTOMATIC ACSR TENSION SPLICE		CAD GENERATED DRAWING DO NOT MANUALLY UPDATE	
DRAWING SCALE:		DESIGN DATE: 3-17-14	
		DRAWN BY:	ZHB
		ENGINEER:	SJL
		APPROVED:	MG