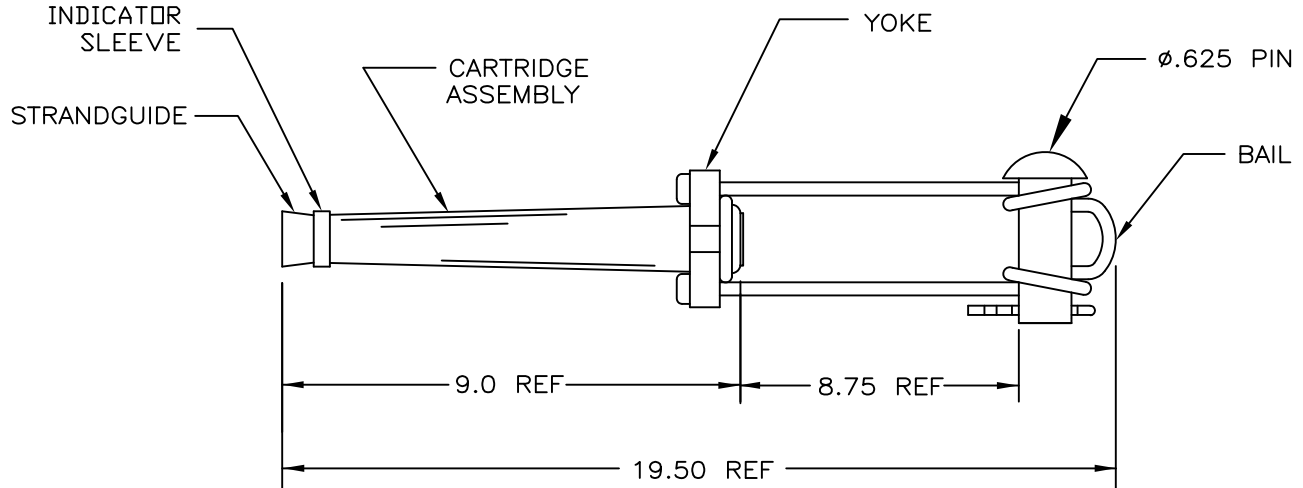


A

B

PAPER SIZE	DRAWING NUMBER	
A SIZE	GD-7656AP-SDS	
REV	REVISION DATE	ECO
A	07-31-2013	11014



## CATALOG NO. 7656AP-SDS

### MATERIAL:

JAWS – DIE CAST ALUMINUM ALLOY  
 TUBING – ALUMIMUM ALLOY  
 PILOT CUP – PLATED STEEL  
 SPRINGS – GALVANIZED STEEL  
 STRANDGUIDE – PLASTIC  
 INDICATOR SLEEVE – PLASTIC  
 CLEVIS PIN – GALVANIZED STEEL  
 YOKE – ALUMINUM  
 BAIL – STAINLESS STEEL  
 COTTER PIN – STAINLESS STEEL

USE OR REPRODUCTION OF THIS DRAWING FOR THE PURPOSE OF MANUFACTURING THIS ARTICLE OR ARTICLES SHOWN OR ANY OTHER PURPOSE IS STRICTLY PROHIBITED EXCEPT ON WRITTEN PERMISSION.

MACLEAN POWER SYSTEMS

TOLERANCES  
UNLESS SPECIFIED

INCH	
0.XX	
0.XXX	
ANGLE	



**MACLEAN  
POWER  
SYSTEMS**

RELIABLE POWER PRODUCTS  
11411 ADDISON STREET  
FRANKLIN PARK, IL 60131

DRAWN BY	ENGINEER	CHECKER	CATALOG #	SCALE	DESIGN DATE
SRA	MG	MG	F044121	NONE	7/30/13
DRAWING TITLE / DESCRIPTION					DRAWING NUMBER
ACSR DEADEND					GD-7656AP-SDS