

A | B | C | D | E | F

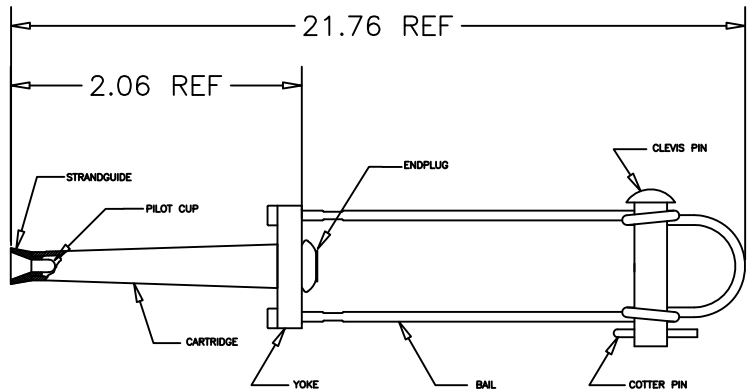
PAPER SIZE	DRAWING NUMBER	
B SIZE	GD-7659-SDS	
REV	REVISION DATE	ECD
A	08-28-15	11929

CATALOG NO. 7659SDS

CONDUCTOR DIAMETER RANGE .740 - .856

MATERIAL:

- JAWS - DIE CAST ALUMINUM ALLOY
- TUBING - ALUMINUM ALLOY
- PILOT CUP - PLATED STEEL
- SPRINGS - GALVANIZED STEEL
- STRANDGUIDE - PLASTIC (AQUA)
- INDICATOR SLEEVE - PLASTIC (AQUA)
- CLEVIS PIN - GALVANIZED STEEL
- YOKE - ALUMINUM
- BAIL - STAINLESS STEEL
- COTTER PIN - STAINLESS STEEL



USE OR REPRODUCTION OF THIS DRAWING FOR THE PURPOSE OF MANUFACTURING THIS ARTICLE OR ARTICLES SHOWN OR ANY OTHER PURPOSE IS STRICTLY PROHIBITED EXCEPT ON WRITTEN PERMISSION.

DRAWING-COMPUTER LOCATION

TOLERANCES UNLESS SPECIFIED	
0.XX	
0.XXX	
ANGLE	

MACLEAN POWER SYSTEMS
 RELIABLE POWER PRODUCTS
 11411 ADDISON STREET
 FRANKLIN PARK, IL 60131

DRAWN BY	ENGINEER	CHECKER	CATALOG #	SCALE	DESIGN DATE
JAA		MG	7659-SDS		08-28-15
DRAWING TITLE / DESCRIPTION					DRAWING NUMBER
SDS DEADEND ASSEMBLY					GD-7659-SDS

1
2
3
4