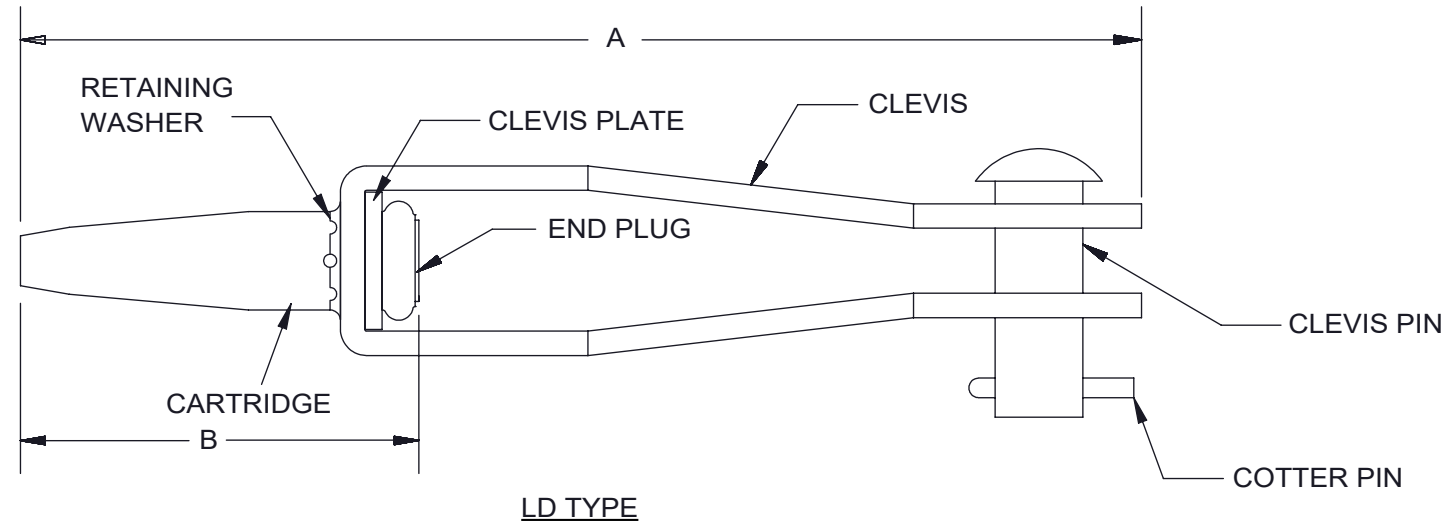
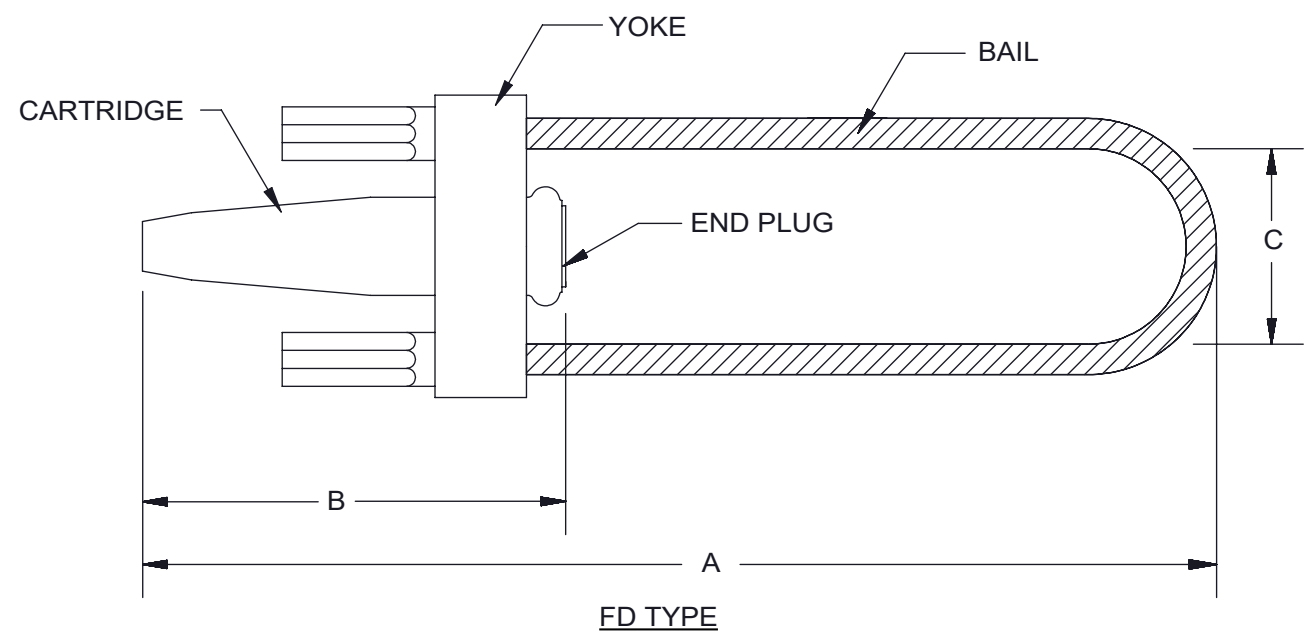


PAPER SIZE		CATALOG NUMBER	
B		81-DEADEND	
REV	REVISED BY	REVISION DATE	ECO #
D	AR	12-15-17	D8907



MATERIAL COMPOSITION BY WEIGHT: COPPER: 30%, STEEL: 70%

DESCRIPTION	MATERIAL
TUBING	COPPER ALLOY
JAWS	BRASS
SPRING	GALVANIZED STEEL
YOKE	STEEL
FD BAIL	GALVANIZED STEEL WIRE
CLEVIS PLATE	GALVANIZED STEEL
CLEVIS PIN	GALVANIZED STEEL
CLEVIS	GALVANIZED STEEL
COTTER PIN	STAINLESS STEEL
RETAINING WASHER	STAINLESS STEEL



MATERIAL COMPOSITION BY WEIGHT: COPPER: 40%, STEEL: 60%

- Notes:**
1. All dimensions are in inches.
 2. All dimensions are reference.
 3. Material composition by weight is approximate.

CONDUCTOR DIAMETER RANGE: .120 - .135							
CATALOG NO.	CU SOLID ASTM-B258	CU 7-STRAND ASTM-B8	COPPERWELD STRAND	A	B	C	STD PACK
81 LD	#8			6.87	2.36		50
81 FD	#8			9.25	2.36	2.00	50

This drawing contains confidential information that is the property of MacLean Power, L.L.C. ("MacLean"). Use of MacLean's confidential information without MacLean's express written consent is strictly prohibited and may expose you to legal liability. If you believe that you received this material in error, please destroy it or return it to "MacLean Power, L.L.C., 481 Munn Rd, Suite 300, Fort Mill, SC 29715 USA."

MACLEAN POWER SYSTEMS
WWW.MACLEANPOWER.COM

DRAWING NUMBER:	
GD-81 DEADEND	
SHEET NAME:	1 OF 1
Sheet1	
DRAWING DESCRIPTION:	
81 COPPER AUTOMATIC DEADENDS	
DRAWN BY:	DESIGN DATE:
AR	12-15-17