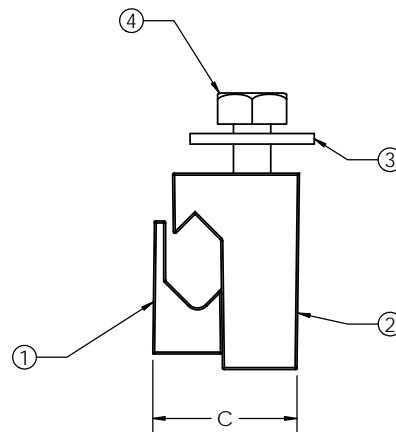
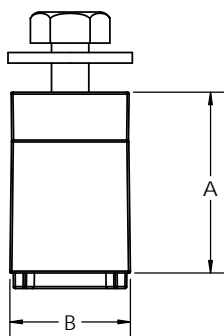
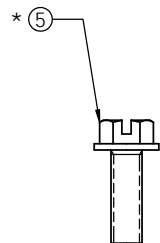
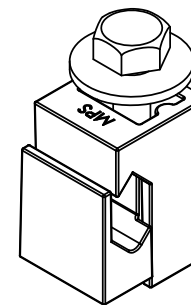


ITEM NO.	DESCRIPTION	MATERIAL
1	BVC MALE	BRONZE
2	BVC FEMALE	BRONZE
3	WASHER	STAINLESS ST OR BRASS
4	BOLT	STAINLESS STEEL
5	FLANGE BOLT	STAINLESS STEEL

PAPER SIZE		CATALOG NUMBER		
B		GD-BVC		
REV	REVISED BY	REVISION DATE	ECO #	
A	RHJ	04-03-14	11242	

* FLANGED BOLT ONLY FOR BVC-6.
NO WASHER FOR BVC-6



NOTES:
1. DIMENSIONS ARE IN INCHES.

CATALOG NO.	CONDUCTOR DIA RANGE	BOLT THREAD SIZE	BOLT HEX HEAD SIZE	A	B	C	STANDARD PACK
BVC-6	10 sol- 6 str	1/4	3/8	0.88	0.64	.073	200
BVC-4	8 sol - 2 sol	5/16	9/16	1.13	0.73	.083	200
BVC-2	6 sol - 2 sol	5/16	9/16	1.33	0.81	.093	200
BVC-2S	5 sol - 2 str	5/16	9/16	1.52	0.79	.093	200
BVC-20	4 sol - 1/0 str	5/16	9/16	1.72	0.80	1.03	100
BVC-20S	3 sol - 2/0 str	3/8	9/16	1.91	0.94	1.19	100
BVC-40	1/0 str - 4/0 str	3/8	9/16	2.14	0.95	1.27	100

This drawing contains confidential information that is the property of MacLean Power, L.L.C. ("MacLean"). Use of MacLean's confidential information without MacLean's express written consent is strictly prohibited and may expose you to legal liability. If you believe that you received this material in error, please destroy it or return it to "MacLean Power, L.L.C., 481 Munn Rd, Suite 300, Fort Mill, SC 29715 USA."



DRAWING NUMBER: GD-BVC	
SHEET NAME: Sheet1	1 OF 1
DRAWING DESCRIPTION: BVC CLAMPS	
DRAWN BY: RHJ	DESIGN DATE: 04-02-14