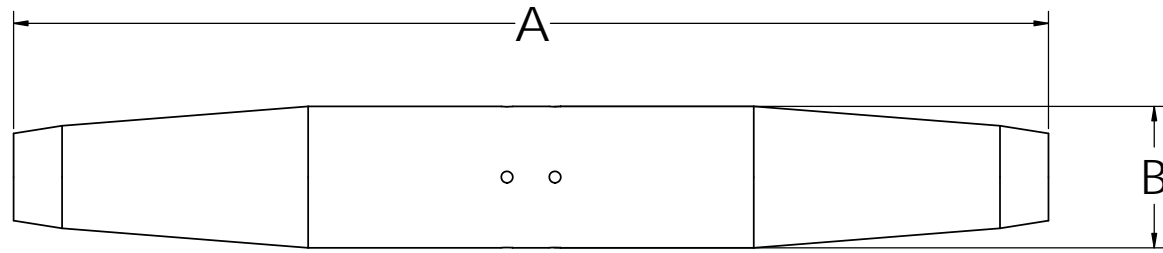


PAPER SIZE		DRAWING NUMBER	
C		GD-COPPER SPLICES	
REV	REVISED BY:	REVISION DATE	ECO #
A	SG	09-07-16	12284

MATERIAL:
TUBE: COPPER
JAWS: BRASS
CENTER BARRIER: STEEL
SPRING: GALVANIZED STEEL



CATALOG NO.	CU SOLID	CU 7-STRAND	A (IN)	B (IN)	CONDUCTOR DIA. RANGE (IN)	STD PAK
81	#8	-	3.87	0.54	.120-.135	100
61	#6	#8	3.87	0.54	.146-.168	400
41	#4	#6	3.58	0.50	.184-.210	200
47	#3	#4	3.66	0.50	.225-.245	200
21	#2 & #3	#3	5.37	0.56	.228-.265	50
27	#1	#2 & #3	5.37	0.56	.270-.305	50
101	1/0	#1	5.37	0.56	.305-.340	50
107	2/0	1/0	5.80	0.75	.340-.385	50
207	3/0	2/0	5.80	0.75	.398-.420	50
307	4/0	3/0	6.80	1.25	.437-.475	25
407	-	4/0	6.80	1.25	.485-.540	25

This drawing contains confidential information that is the property of MacLean Power, L.L.C. ("MacLean"). Use of MacLean's confidential information without MacLean's express written consent is strictly prohibited and may expose you to legal liability. If you believe that you received this material in error, please destroy it or return it to "MacLean Power, L.L.C., 11411 Addison Street, Franklin Park, Illinois 60131, USA."

UNLESS OTHERWISE SPECIFIED DIMENSIONS ARE IN:	
INCHES	
TOLERANCES ARE:	
.XX	+/- .015
.XXX	+/- .005
ANGLES	+/- 1°

MACLEAN POWER SYSTEMS
RELIABLE POWER PRODUCTS
11411 ADDISON STREET
FRANKLIN PARK, IL 60131
TEL: (847) 455-0014 FAX: (847) 455-0029

DRAWING NUMBER:	GD-COPPER SPLICES		DO NOT SCALE DRAWING
SHEET NAME:	1 OF 1		CAD GENERATED DRAWING DO NOT MANUALLY UPDATE
DRAWING DESCRIPTION:	GENERAL DIMENSION DRAWING FOR COPPER SPLICES		DESIGN DATE: 09-07-16
DRAWN BY:	SG		ENGINEER: SG
APPROVED	MG		
DRAWING SCALE:	1:1		