

A

B

C

D

E

F

PAPER SIZE	DRAWING NUMBER	
B SIZE	GD-J204LTZ	
REV	REVISION DATE	ECO
A	08/11/15	11899

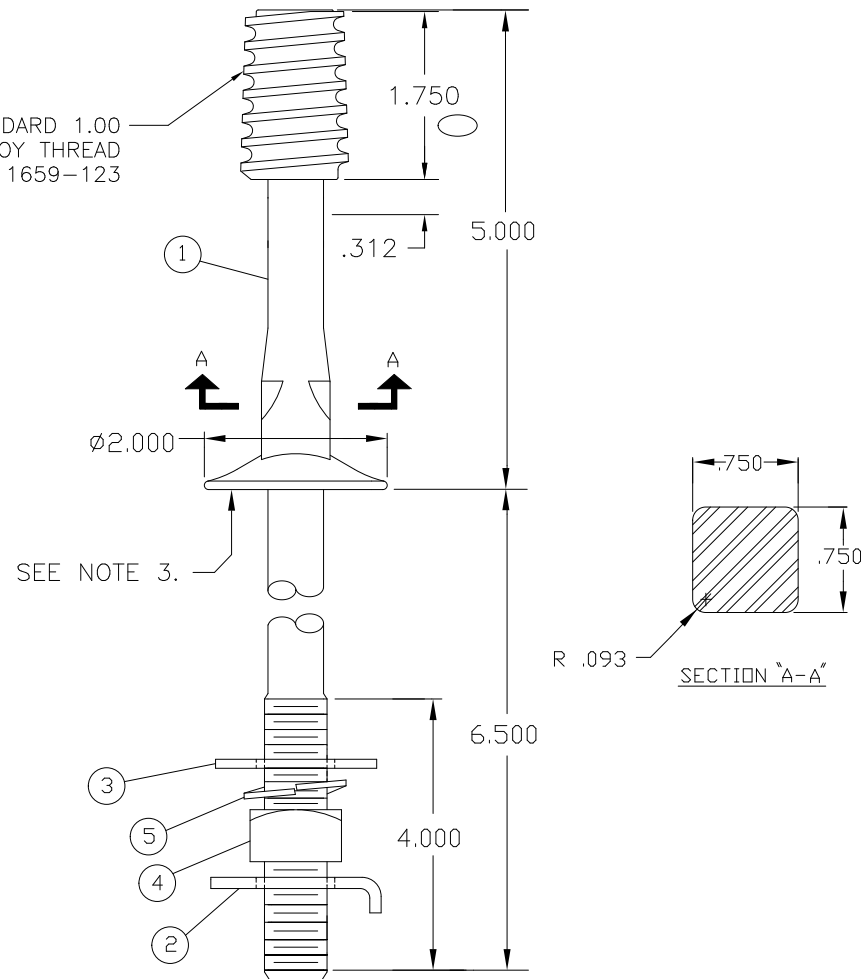
MATERIAL:

THREAD: NYLON ALLOY

NOTES:

1. ALL DIMENSIONS ARE REFERENCE AND IN INCHES EXCEPT AS NOTED.
2. ALL ITEMS GALVANIZED EXCEPT 1.000 THREAD. WORKMANSHIP PER ASTM A-153.
3. MANUFACTURER'S IDENTIFICATION MARK ("J" STAMP) AND YEAR OF MANUFACTURE (example "07") IN LOCATION SHOWN.

ITEM	QTY	DESCRIPTION
1	1	.625 DIA. STEEL PIN BODY
2	1	.625 DIA. TAPPED LIP WASHER
3	1	1.750 DIA. ROUND WASHER
4	1	.625 REGULAR SQUARE NUT
5	1	.625 SPRING LOCKWASHER



PART NO. F102468

This drawing contains confidential information that is the property of MacLean Power, L.L.C. ("MacLean"). Use of MacLean's confidential information without MacLean's express written consent is strictly prohibited and may expose you to legal liability. If you believe that you received this material in error, please destroy it or return it to "MacLean Power, L.L.C., 11411 Addison, Franklin Park, Illinois 60131, USA."

DRAWING-COMPUTER LOCATION

TOLERANCES UNLESS SPECIFIED	
INCH	
0.XX	----
0.XXX	----
ANGLE	----



MACLEAN
POWER
SYSTEMS
11411 ADDISON STREET
FRANKLIN PARK, IL. 60131

DRAWN BY	ENGINEER	CHECKER	CATALOG #	SCALE	DESIGN DATE
ZA			J204LTZ	NTS	08-23-00
DRAWING TITLE / DESCRIPTION					DRAWING NUMBER
PIN X ARM W/NA THD					GD-J204LTZ