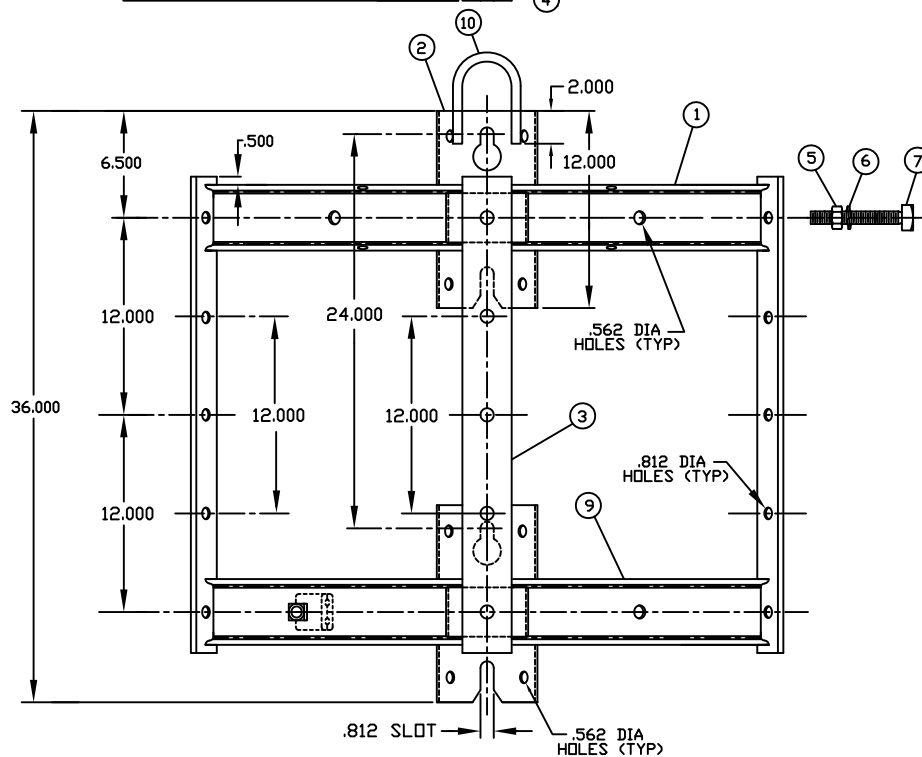


ITEM	QTY	DESCRIPTION
1	1	4.000 X 1.625 TOP CHANNEL WING
2	2	.187 BACK MOUNTING PLATE
3	3	.375 X 3.000 SIDE MOUNTING PLATE
4	2	.250 FRONT MOUNTING PLATE
5	6	.750 REGULAR HEX NUT
6	6	.750 SPRING LOCKWASHER
7	6	.750 X 2.750 SQ HEAD MACH BOLT
8	1	GROUND CLAMP ASSEMBLY
9	1	4.000 X 1.625 BOTTOM CHANNEL WING
10	1	LIFTING EYE, 9/16" DIAMETER



NOTES:

1. ALL DIMENSIONS ARE REFERENCE, AND ARE IN INCHES, EXCEPT AS NOTED
2. FOR J26495 CLAMP TO BE INCLUDED IN THE ASSEMBLY ADD SUFFIX "G" TO CATALOG NO. (EX J6866G)
3. ITEM NO 8 REQUIRED ONLY FOR J6866G
4. HOT DIP GALVANIZED (ASTM A-153) AFTER WELDING

				CATALOG NO. J6866 AND J6866G	
				JOSLYN MANUFACTURING CO.	
				TRANSFORMER CLUSTER MOUNT ASSEMBLY	
1	ECN D8980, CREATE CUST DWG	2-19-18	JM		
NO.	REVISION	DATE	CK.		
UNSPECIFIED DIMENSIONAL TOLERANCES					
FRACTIONAL ±		DECIMAL ±	ANGULAR ±		
SUPERSEDES: DWG NO. 26102 DATED 3-6-84					
THIS DRAWING IS THE PROPERTY OF JOSLYN MANUFACTURING CO. AND EMBODIES A CONFIDENTIAL, PROPRIETARY DESIGN IN WHICH JOSLYN RETAINS ALL PATENTS AND PROPRIETARY RIGHTS, INCLUDING EXCLUSIVE RIGHT OF USE, MANUFACTURE AND SALE. BY ACCEPTING THIS DRAWING, THE RECIPIENT AGREES NOT TO DISCLOSE, REPRODUCE OR USE ANY INFORMATION CONTAINED HEREIN WITHOUT THE PRIOR WRITTEN CONSENT OF JOSLYN.					
DATE 12-29-97		DWG. NO. GD-J6866		1/4	
DRAWN JB		NO.		SCALE:	
CHECKED				SHEET 1 OF 1	