

A

B

C

D

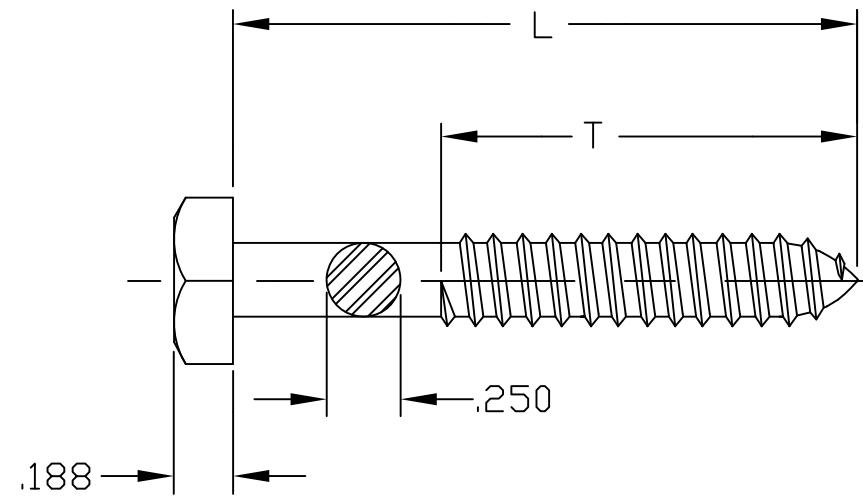
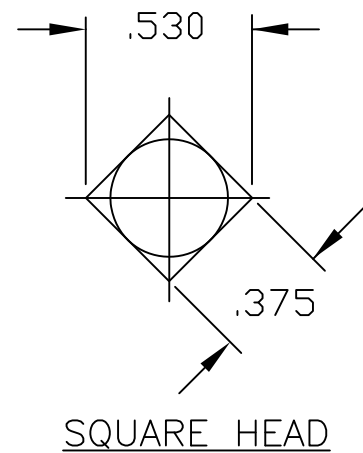
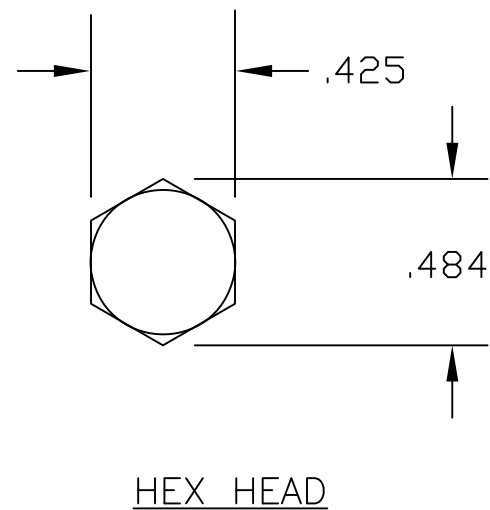
E

F

PAPER SIZE		DRAWING NUMBER	
B SIZE		GD-J872X	
REV	REVISION DATE	ECO	
A	10-18-16	12323	

1

2



NOTES:

1. ALL DIMENSIONS ARE IN INCHES, EXCEPT AS NOTED
2. MATERIAL: HOT ROLLED CARBON STEEL PER ASTM A-510, GRADE 1018-1022
3. HOT DIP GALVANIZED PER ASTM A-153 OR MECHANICAL GALVANIZED PER ASTM B-695.
4. MINIMUM TENSILE STRENGTH 1500 LBS.

3

CATALOG NO.	PART NO.	L	T	BOX QTY	HEAD TYPE
J8721-1/2	-	1.500	1.250	2000	SQUARE
J8721-1/2HH	-				HEX
J8722	-	2.000	1.500	2000	SQUARE
J8722HH	-				HEX
J8722-1/2	-	2.500	1.750	1000	SQUARE
J8722-1/2HH	-				HEX
J8723	-	3.000	2.000	1000	SQUARE
J8723HH	-				HEX

4

This drawing contains confidential information that is the property of MacLean Power, L.L.C. ("MacLean"). Use of MacLean's confidential information without MacLean's express written consent is strictly prohibited and may expose you to legal liability. If you believe that you received this material in error, please destroy it or return it to "MacLean Power, L.L.C., 11411 Addison, Franklin Park, Illinois 60131, USA."

DRAWING-COMPUTER LOCATION
DRAWING-COMPUTER LOCATION:

TOLERANCES UNLESS SPECIFIED	
inch	
0.XX	
0.XXX	
ANGLE	



**MACLEAN
POWER
SYSTEMS**
RELIABLE POWER PRODUCTS
11411 ADDISON STREET
FRANKLIN PARK, IL. 60131

DRAWN BY	ENGINEER	CHECKER	CATALOG #	SCALE	DESIGN DATE
MB	MB	MG	SEE TABLE	NTS	08-19-16
DRAWING TITLE / DESCRIPTION					DRAWING NUMBER
SCREW LAG 1/4					GD-J872X