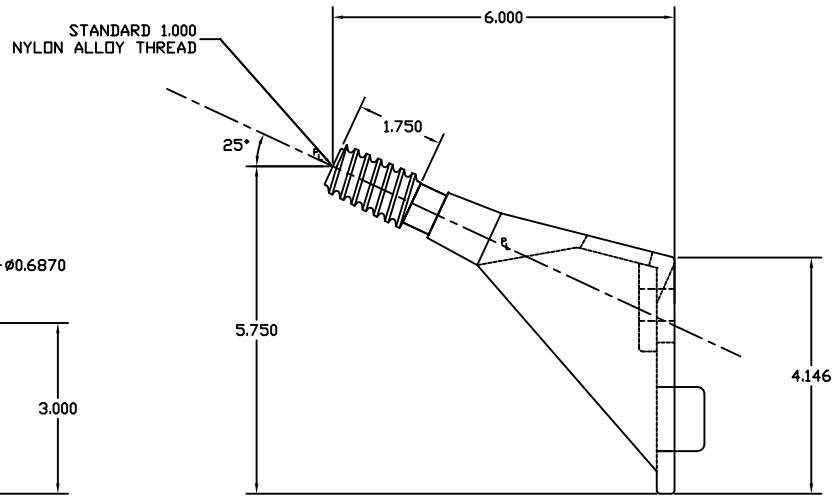
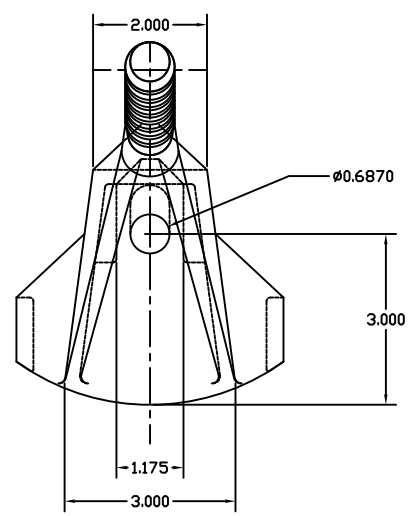
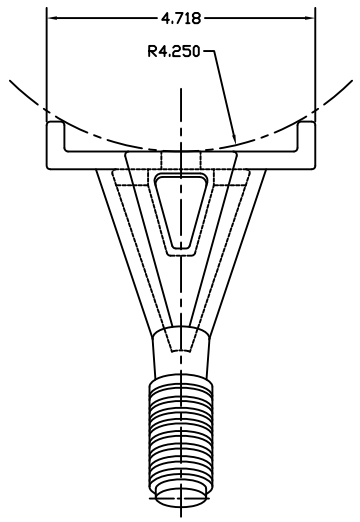


A | B | C | D | E | F

PAPER SIZE	DRAWING NUMBER	
B SIZE	GD-P400Z	
REV	REVISION DATE	ECO
A	07-06-17	D8681

MATERIAL:
 THREAD: NYLON ALLOY
 ANGLE PIN BODY: DUCTILE IRON

NOTES:
 1. ALL DIMENSIONS ARE REFERENCE AND IN INCHES EXCEPT AS NOTED.
 2. ALL ITEMS GALVANIZED EXCEPT 1.000 THREAD.
 WORKMANSHIP PER ASTM A-153.



DRAWING-COMPUTER LOCATION

TOLERANCES UNLESS SPECIFIED	
inch	
0.XX	— — —
0.XXX	— — —
ANGLE	— — —



DRAWN BY	ENGINEER	CHECKER	CATALOG #	SCALE	DESIGN DATE
PDR	RRL	JBB	P400Z	NTS	03-11-11
DRAWING TITLE / DESCRIPTION					DRAWING NUMBER
PIN X ARM W/NA THD					GD-P400Z

This drawing contains confidential information that is the property of MacLean Power, L.L.C. ("MacLean"). Use of MacLean's confidential information without MacLean's express written consent is strictly prohibited and may expose you to legal liability. If you believe that you received this material in error, please destroy it or return it to "MacLean Power, L.L.C., 11411 Addison, Franklin Park, Illinois 60131, USA."