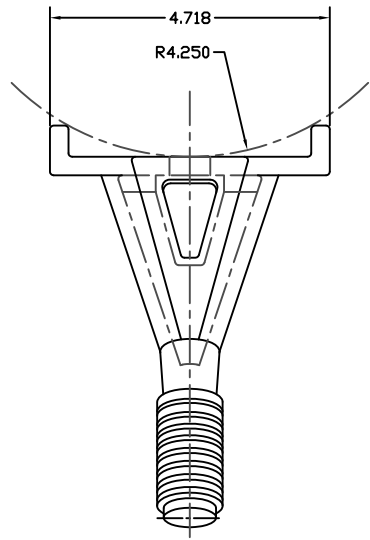


A | B | C | D | E | F

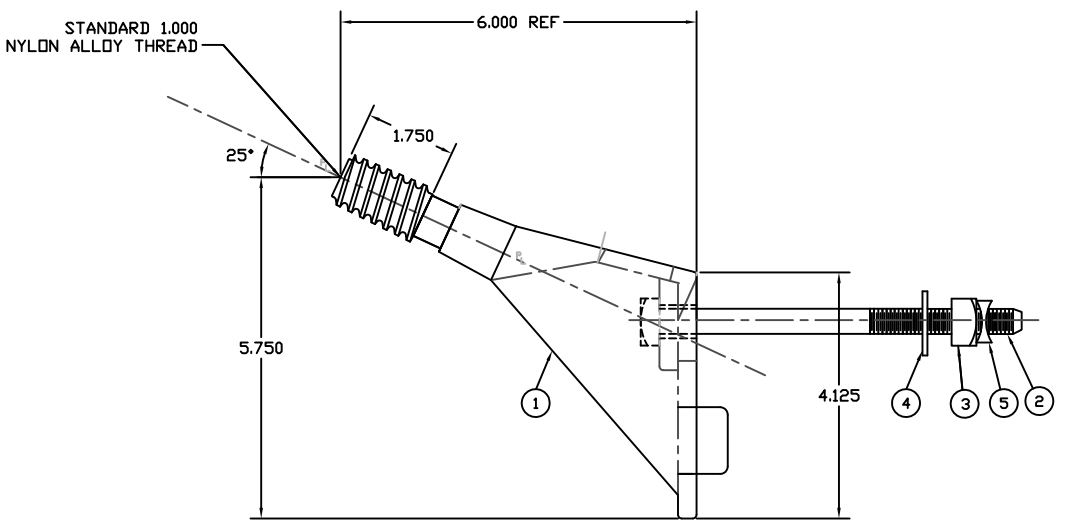
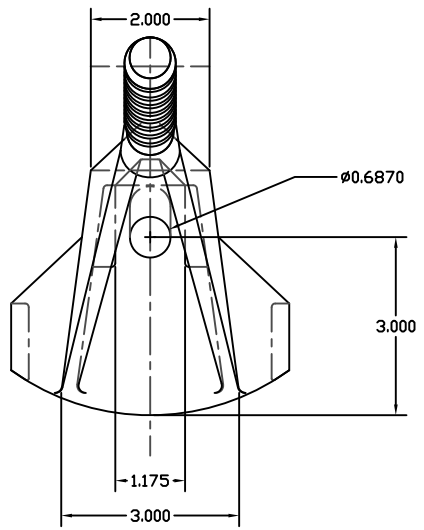


ITEM	QTY	DESCRIPTION	MATERIAL
1	1	ANGLE PIN BODY	DUCTILE IRON W/ NYLON ALLOY THREAD
2	1	.625 X 7.000 SQ HEAD MACH. BOLT	HOT ROLLED CARBON STEEL
3	1	.625 REGULAR SQUARE NUT	HOT ROLLED CARBON STEEL
4	1	2.000 X 2.000 SQUARE WASHER	HOT ROLLED CARBON STEEL
5	1	.625 M-F LOCKNUT	HOT ROLLED CARBON STEEL

PAPER SIZE	DRAWING NUMBER	
B SIZE	GD-PA400Z	
REV	REVISION DATE	ECO
A	05-11-09	9496
B	04-25-16	12165
C	07-10-17	D8681

NOTES:

1. ALL DIMENSIONS ARE REFERENCE AND IN INCHES EXCEPT AS NOTED.
2. ALL ITEMS GALVANIZED FINISH EXCEPT 1.000 NYLON ALLOY THREAD.



This drawing contains confidential information that is the property of MacLean Power, L.L.C. ("MacLean"). Use of MacLean's confidential information without MacLean's express written consent is strictly prohibited and may expose you to legal liability. If you believe that you received this material in error, please destroy it or return it to "MacLean Power, L.L.C., 11411 Addison, Franklin Park, Illinois 60131, USA."

DRAWING-COMPUTER LOCATION

TOLERANCES UNLESS SPECIFIED	
	inch
0.XX	— — —
0.XXX	— — —
ANGLE	— — —



DRAWN BY	ENGINEER	CHECKER	CATALOG #	SCALE	DESIGN DATE
RRL	RRL	FJS	PA400Z	NTS	09-30-04
DRAWING TITLE / DESCRIPTION					DRAWING NUMBER
PIN X ARM W/NA THD					GD-PA400Z