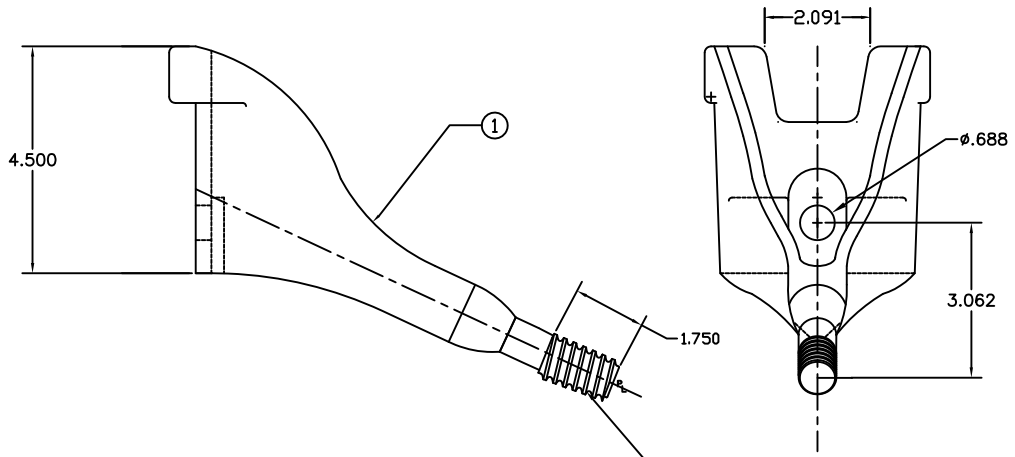
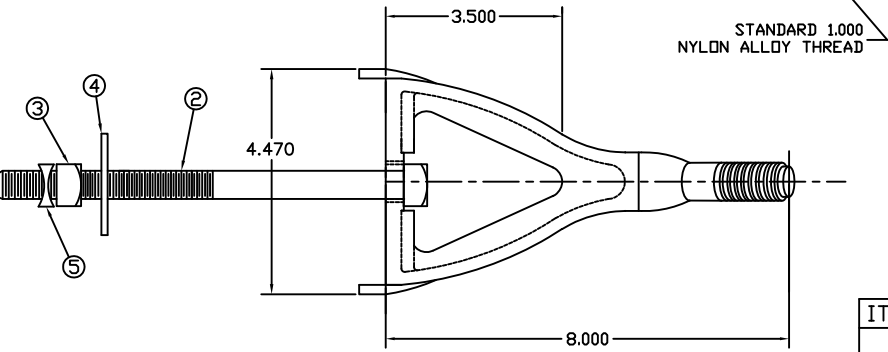


A | B | C | D | E | F

PAPER SIZE	DRAWING NUMBER	
B SIZE	GD-PA402Z	
REV	REVISION DATE	ECO
A	07-06-17	D8681



NOTES:
 1. ALL DIMENSIONS ARE REFERENCE AND IN INCHES EXCEPT AS NOTED.
 2. ALL ITEMS GALVANIZED EXCEPT 1.000 THREAD. WORKMANSHIP PER ASTM A-153.



ITEM	QTY	DESCRIPTION	MATERIAL
1	1	ANGLE PIN BODY DETAIL	DUCTILE IRON W/ NYLON ALLOY THREAD
2	1	.625 X 7.000 SQ HD MACHINE BOLT	HOT ROLLED CARBON STEEL
3	1	.625 REGULAR SQUARE NUT	HOT ROLLED CARBON STEEL
4	1	2.000 SQUARE FLAT WASHER	HOT ROLLED CARBON STEEL
5	1	M-F LOCKNUT 5/8	HOT ROLLED CARBON STEEL

This drawing contains confidential information that is the property of MacLean Power, L.L.C. ("MacLean"). Use of MacLean's confidential information without MacLean's express written consent is strictly prohibited and may expose you to legal liability. If you believe that you received this material in error, please destroy it or return it to "MacLean Power, L.L.C., 11411 Addison, Franklin Park, Illinois 60131, USA."

DRAWING-COMPUTER LOCATION

TOLERANCES UNLESS SPECIFIED	
INCH	
0.XX	----
0.XXX	----
ANGLE	----



DRAWN BY	ENGINEER	CHECKER	CATALOG #	SCALE	DESIGN DATE
JBB	RJK	FJS	PA402Z	NTS	11-07-06
DRAWING TITLE / DESCRIPTION					DRAWING NUMBER
PIN X ARM W/NA THD					GD-PA402Z