



MacLean Power Systems  
 7801 Park Place Rd., York, SC 29745  
 USA (803) 628-2100

MPS Catalog Number

**H0 40 60 008 MX SS 004**

Revision: B

Date 3/3/2021

**End Fittings**

Tower End Fitting: 3/4"-10 Round Base (Galv. Duct. Iron)

Line End Fitting: Vertical Trunnion (Aluminum)

**Material**

Number of Sheds: 4  
 Rod Diameter: 1-1/2"  
 Weight Estimate: 7.8 lbs 3.5 kg

**Dimensional Values**

Section Length (L): 16.7 in 423 mm  
 Rubber Length (X): 7.9 in 201 mm  
 Shed Height (P): 2.3 in 58 mm  
 Shed Diameter (B): 6.5 in 165 mm  
 Shed Spacing (S): 2.0 in 51 mm  
 Dry Arc Distance: 10.2 in 259 mm  
 Leakage Distance: 24.4 in 620 mm

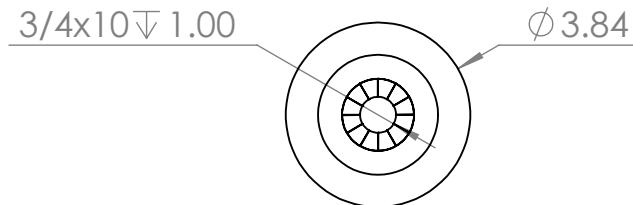
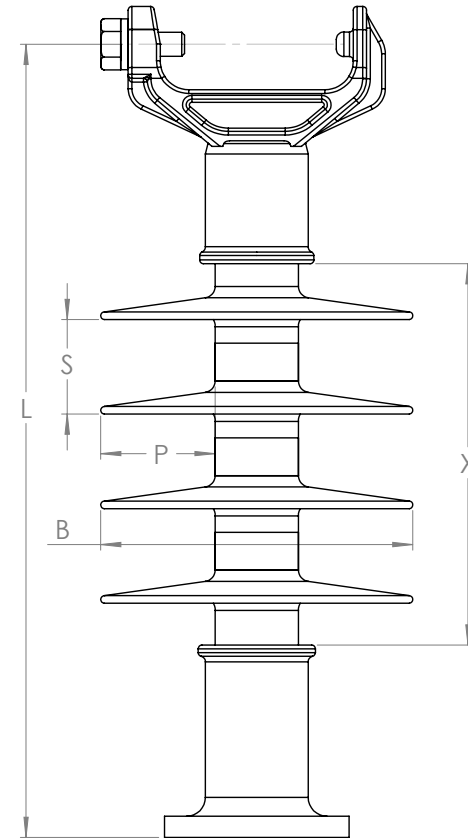
**Electricals Values**

60 Hz dry Flashover: 135 kV Min. Withstand 107 kV  
 60 Hz Wet Flashover: 96 kV Min. Withstand 69 kV  
 Positive CIFO: 198 kV Min. Withstand 166 kV  
 Negative CIFO: 228 kV Min. Withstand 197 kV

**Mechanical Values**

Max. Design Cant. Load (MDCL): 1,350 lbs 6.0 kN  
 Specified Cant. Load (SCL): 2,800 lbs 12.5 kN  
 Specified Tensile Load (STL): 5,000 lbs 22.2 kN

This drawing contains confidential information that is the property of MacLean Power, L.L.C. ("MacLean"). Use of MacLean's confidential information without MacLean's express written consent is strictly prohibited and may expose you to legal liability. If you believe that you received this material in error, please destroy it or return it to "MacLean Power, L.L.C., 7801 Park Place Rd., York, South Carolina 29745, USA."



Dimension: inches [millimeters]

Insulator assembly complies with ANSI C.29.18 and CSA C411.6 Standards

NOTE: Drawing not actual depiction of insulator appearance