



MacLean Power Systems
 7801 Park Place Rd., York, SC 29745 USA
 (803) 628-2100

MPS Catalog Number

H0 40 7T 008 MX SS 004

Revision: A

Date 6/18/2025

End Fittings

Tower End Fitting: 3/4"-10 Round Base (Galv. Duct. Iron)

Line End Fitting: F-Neck (Aluminum)
 Tin Plated Aluminum

Material

Number of Sheds: 4
 Rod Diameter: 1-1/2"
 Weight Estimate: 8.2 lbs 3.7 kg

Dimensional Values

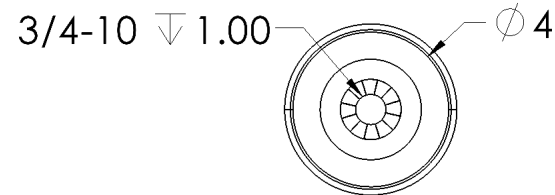
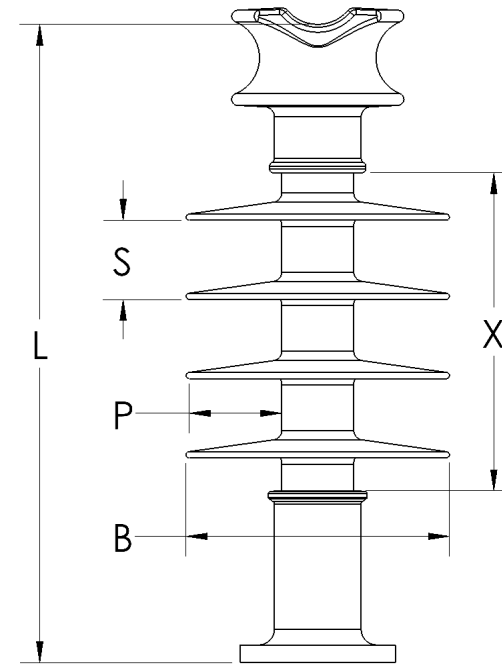
Section Length (L):	15.6 in	396 mm
Rubber Length (X):	7.9 in	201 mm
Shed Height (P):	2.3 in	58 mm
Shed Diameter (B):	6.5 in	165 mm
Shed Spacing (S):	2.0 in	51 mm
Dry Arc Distance:	10.2 in	259 mm
Leakage Distance:	24.4 in	620 mm

Electricals Values

60 Hz dry Flashover:	135 kV	Min. Withstand	107 kV
60 Hz Wet Flashover:	96 kV	Min. Withstand	69 kV
Positive CIFO:	198 kV	Min. Withstand	166 kV
Negative CIFO:	228 kV	Min. Withstand	197 kV

Mechanical Values

Max. Design Cant. Load (MDCL):	1,350 lbs	6. kN
Specified Cant. Load (SCL):	2,800 lbs	12.5 kN
Specified Tensile Load (STL):	5,000 lbs	22.2 kN



Part Marking:

WO #
 H0 40 7T 008 MX SS 004
 35kV
 MDCL 1350 lbs / 6.0 Kn

This drawing contains confidential information that is the property of MacLean Power, L.L.C. ("MacLean"). Use of MacLean's confidential information without MacLean's express written consent is strictly prohibited and may expose you to legal liability. If you believe that you received this material in error, please destroy it or return it to "MacLean Power, L.L.C., 7801 Park Place Rd., York, South Carolina 29745, USA."

Dimension: inches [millimeters]
 NOTE: Drawing not actual depiction of insulator appearance

Insulator assembly complies with ANSI C.29.18 and CSA C411.6 standards