

MPS Catalog Number

H2 90 10 025 MX SS 013

Date: 03/13/2024

End Fittings

Tower End Fitting:

Gain / 12 deg / Steel

Line End Fitting:

2 HL Drop Tongue / Galv. Ductile Iron

Material

Corona Ring (Line):

None

Corona Rings are recommended for applications of 230 kV and above

Mounting Angle:

12 deg

Number of Sheds:

13

Rod Diameter:

2.5 in

Weight Estimate:

47.7 lbs

22 kg

Dimensional Values

Section Length (L):

35.7 in 907 mm

Rubber Length (X):

25 in 635 mm

Shed spacing (S):

1.95 in 50 mm

Shed Projection (P):

1.86 in 47 mm

Dry Arc Distance:

27.6 in 701 mm

Leakage Distance:

69.1 in 1,755 mm

Electricals Values

60 Hz dry Flashover (Min. Withstand):

273 kV 256 kV

60 Hz Wet Flashover (Min. Withstand):

250 kV 193 kV

CIFO Positive (Min. Withstand):

465 kV 416 kV

CIFO Negative (Min. Withstand):

560 kV 451 kV

Mechanical Values

Max. Design Cant. Load (MDCL):

2,754 lbs 12.3 kN

Specified Cant. Load (SCL):

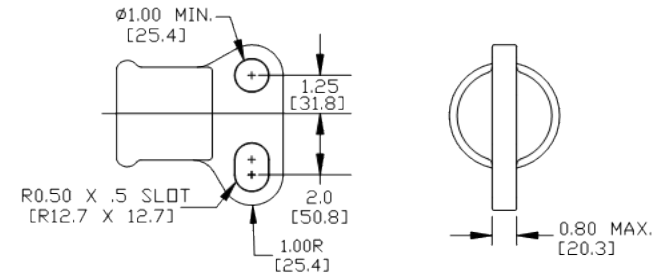
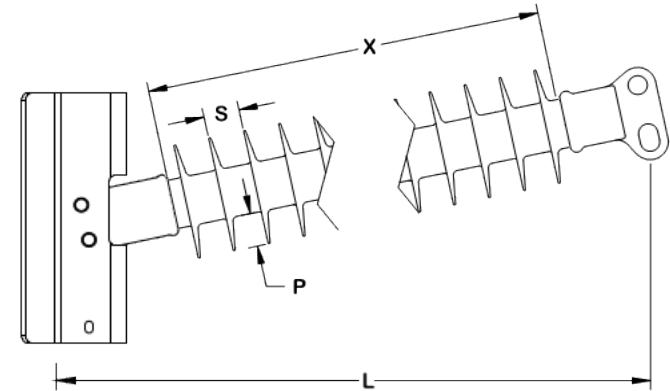
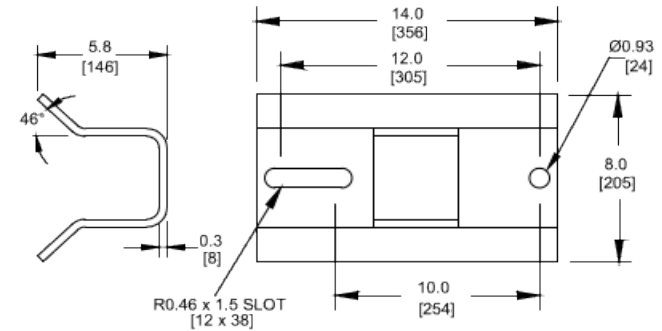
5,508 lbs 24.5 kN

Specified Tensile Load (STL):

15,000 lbs 66.7 kN

This drawing contains confidential information that is the property of MacLean Power, L.L.C. ("MacLean"). Use of MacLean's confidential information without MacLean's express written consent is strictly prohibited and may expose you to legal liability. If you believe that you received this material in error, please destroy it or return it to "MacLean Power, L.L.C., 7801 Park Place Rd., York, South Carolina 29745, USA."

Notes:



Dimension: inches [millimeters]

NOTE: Drawing not actual depiction of insulator appearance.

Silicone rubber sheath and sheds complies with applicable ANSI and IEC standards.

Prepared By: Evan Huber